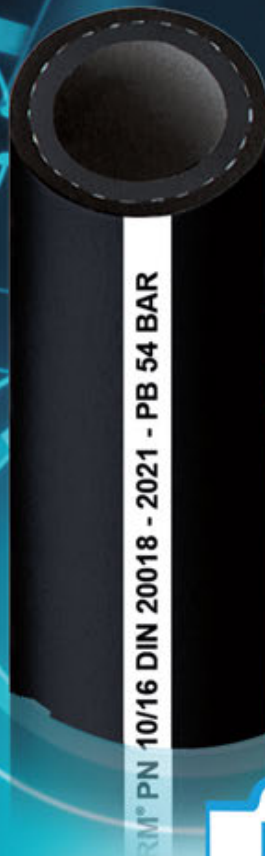


Catalogue 21

Rubber hoses
Thermoplastic hoses



baggerman

New Products



MP 20
Page 30



HEDUFLEX®/GRECATO
Page 39



MILKCORD®/SP/BUTYL
Page 50




SM1® - STRAHLEMEISTER
Page 88



CARBOFLEX®/U.L./OHM
Page 109

Table of contents

	Water hoses	13 - 39
	Marine hoses	40 - 42
	Hot water hoses	43 - 45
	Steam hoses	46 - 47
	Beverage and food hoses	48 - 51
	Air hoses	52 - 65
	Gas hoses	66 - 72
	Cable protection hose	73
	Ventilation hoses	74 - 76
	Abrasion resistant hoses	77 - 98
	Oil and petrol hoses	99 - 113
	Chemical hoses	114 - 116

Essential conditions for secured application of hose assemblies:

1. Selection of hose and fittings according demand (specification) by medium and application (working circumstances).

- Particles of liquid or solid agents may physically penetrate, respectively cause chemical reactions.
- Physical effects: Causing change in volume of the hose material, consequently causing a change in the characteristics i.e. hardness, tensile strength, elongation etc. (example "popcorning" in steam hoses).
- Chemical effects: Causing change in chemical construction of hose material, causing change in properties (e.g. plasticizers or ageing-protectors are decomposed causing possible spill or leakage).
- Exploratory details can be found in the charts "General properties" (pages 6-7) and "Chemical resistance tables" (pages 8-12).
- The permitted working pressure and vacuum are not to be exceeded.
- The permitted working temperature in interdependence with the medium is not to be exceeded.
- In case of abrasion always consider wear and tear. Regular checking of the hose is required.
- Hose assemblies may, in the process of use, never absorb dangerous electrical charges and where applicable the electrical resistance (measured over the hose from fitting to fitting) may not exceed the value of $10^6 \Omega$.
- Hoses marked with „ Ω “ are consisting of materials already causing conductive properties.
- Hoses marked with „M“ need to be secured by connecting the static wire(s) to the fittings in a permanent way, such in order to assure conductivity.
- The indicated overpressure on the plastic spiral hoses refers to a short-term pressure at 20°C. Multiple overpressure usage will lead to a weakened hose and will also reduce the lifetime of the hose.

2. Professional assembly

- The selection of hose and fittings must be made in correct sizes and attuned to each other.
- Assemblies of fittings may only be executed by experts and is always subjected to prevailing directives.

3. Correct storage

- Always stock the hoses dry and clean.
- Avoid influences from radiation of Ultraviolet and sunshine.
- Store tension and kink free.
- Avoid temperatures under -20°C and over 30°C.

4. Correct utilization

- Hose assemblies must always be installed accessible for persons, in it's natural position and unobstructed. Take into account that hoses under vacuum suffer from decrease in length.
- Under pressure, change in length and diameter will occur (non-reinforced PVC spiral hoses may elongate to 40% of it's original length when maximum working pressure is applied).
- Hose lengths may, in essence, not be claimed on their ability of torsion, elongation and pulling strength.
- Hose lengths may not be put under torsion, compression and extension.
- Hose lengths may not be bended below its bending radius, especially not behind the fittings. For details on "bending radius" please consult the table on page 5.
- When required inspect and check electrical resistance of

the hose lengths

5. Registration of procedure of instructions meeting regular education of employees. Readiness and use of appropriate personal safety equipments.

- To handle hose-lengths safely it is necessary to implement technical, personal and organizational measures for protection. Preference must be given to the technical and organizational measures. Should these not avoid all dangers, effective personal safety equipment must be provided and used.

6. Regular inspections

- Hose assemblies must be inspected by an expert prior to putting into use. Regular inspections are recommended then-after (e.g. chemical hoses once a year, steam hoses at least once every six months).
- Essential details of inspection should be:
- Visual inspection of the hose:
 - Sufficiently cleaned before inspection
 - Kinks, bruises and deformations
 - Chemical porosity or mechanical damage to inner tube and/or cover.
 - Damage, deformation or corrosion to the fittings.
 - Damage, deformation of missing seals and washers.
- Pressure test, leak proof tests:
 - Pores, leaks, kinks, bruises, blisters or deformations.
 - Unacceptable elongation, overextended torsion.
 - Leakage, in hose connection or fitting(s).
- Inspection of electrical conductivity:
 - Testing ability of electrical resistance with "Ω" and "M" hoses.
- Testing results must be documented.

* Source: BG Chemie Merkblatt T002 (ZH 1/134)

General information

How to choose the right hose for the job required?

1. Dimensions

- A. Inside diameter
- B. Outside diameter
- C. Length (with/without couplings)
- D. Tolerance (according or not to norms)

2. Substances to be carried in the hose

- A. Liquid, gas or solid
 - a1. Chemical identification
 - a2. Concentration
 - a3. Temperature
 - a4. Size and type of solids

3. Application

- A. Working-test-burst pressure
- B. Vacuum
- C. Continuous non-continuous use
- D. Flow capacity (kg/liters per minute)

4. External conditions

- A. UV and ozone-resistance
- B. External abrasion
- C. External temperature
- D. Chemical of petrol influences

5. Special features

- A. Weight
- B. Flexibility
- C. Bending radius
- D. Torsion
- E. Electrical conductivity
- F. Flame resistance
- G. Pulling strength
- H. Torsion resistance, axial and longitudinal
- I. Color
- J. Special markings, printing, labels

6. Hose-construction

- A. In- and outside smooth, outside welded, corrugated
- B. With or without cuffs, enlarged or conical
- C. With or without spiral(s) in PVC or steel
- D. Kind of insertions; textile, steel, otherwise

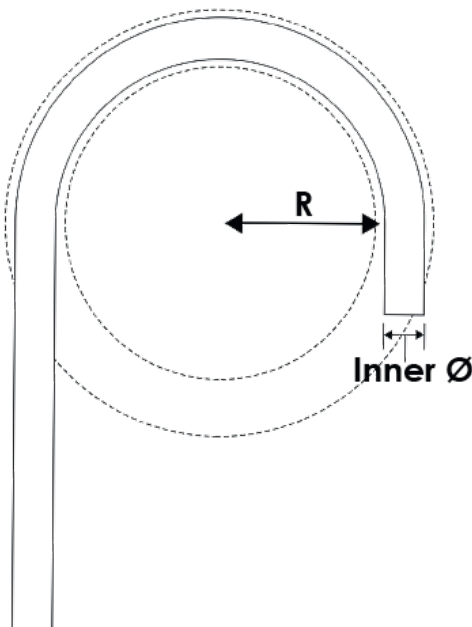
7. System couplings and adaptors

- A. Couplings or adaptors, male, female, threaded
- B. Hose clamps, safety clamps, swages, band-it

8. Applicable norms, specifications, legislations

9. Cleaning

- A. When using chemicals (type / concentration)
- B. When using steam (pressure / temperature)
- C. Cleaning time



Bending radius: "R" is the radius of the smallest possible circle to which a hose in service can be bent without damage or shortening its life, by kinking. Textile reinforced hose may kink if the bending radius is reduced. A helical wire will serve better bending radius without flattening or kinking.

Mandrel-built hoses

6 x inside diameter

Spiral reinforced hoses (in/outside smooth)

8 x inside diameter till 100mm
10 x inside diameter over 100mm

Spiral reinforced hoses (outside corrugated)

6 x inside diameter till 100mm
8 x inside diameter over 100mm

When hoses under pressure, please calculate 4/5 of the above mentioned values

General properties

Chemical name	Polyvinyl- Chloride	Polyurethane Rubber	Natural Rubber	Styrene Butadiene Rubber	Ethylene Propylene Diene Monomer
Chemical group of the hose interior	P.V.C.	P.U.R.	N.R.	S.B.R.	E.P.D.M.
Max. temperature range °C					
- Dry air	+60°C	+80°C	+70°C	+70°C	+120°C
- Hot oil	-	+60°C	-	-	-
- Hot water	+60°C	+40°C	+70°C	+80°C	+140°C
Min. temperature range °C	-10°C	-20°C	-40°C	-30°C	-50°C
General resistance against:					
- Mineral oils and fats	moderate	good	slightly	slightly	slightly
- Animal/vegetable oils/fats	moderate	good	slightly/moderate	poor/slightly	slightly
- Acids diluted	good	moderate	moderate/good	moderate/good	excellent
- Acids concentrated	slightly/moderate	slightly	moderate/good	moderate/good	good
- Solvents:					
Aliphates, petrols	slightly	moderate/good	slightly	slightly	slightly
Aromatics: toluene, benzene	slightly	slightly	slightly	slightly	slightly
Esters, ethers, alcohols	slightly	slightly	good	good	excellent
Chlorinated: tetra, tri, etc.	slightly	slightly	slightly	slightly	slightly/moderate
- Water absorption	very good	very good	very good	good/very good	excellent
- Sunlight and Ozone	slightly/good	very good	slightly	slightly/moderate	excellent
Elasticity	good	good	excellent	good	moderate/good
Resistance against deformation	slightly	moderate	good	good	good
Abrasion resistance	good	excellent	excellent	very good	good
Permeability	slightly	hardly	hardly	hardly	hardly
Electrical insulation	good	good	good/very good	good/very good	excellent
Hardness range (Shore A)	60 – 85	50 A – 75 D	30 – 90	40 – 90	40 – 90
Flame resistance	bad	bad	slightly	slightly	slightly
Tensile strength	20 – 30 Mpa	20 – 30 Mpa	18 – 30 Mpa	15 – 25 Mpa	10 – 20 Mpa
Special properties	Slightly chemical resistant, lightweight, color proof, also available as food certified PVC quality (non-toxic)	Elastic, high mechanical strength and notch-resistant. Wear, tear, ozone, weather, oil, petrol, gas and chemical resistant	Elastic, cold, wear and tear resistant, low concentrated acid and alcohol resistant	Oil mist air, industrial water, glycol	Heat, steam, ozone, UV and aging resistant. Chemical
Thermal properties	-35°C / +70°C	-30°C / +90°C	-60°C / +80°C	-50°C / +100°C	-50°C / +160°C

General properties

Chemical name	Acronitrile Butadiene Copolymer (Nitrile)	Chloroprene Polymer (Neoprene)	Silicone Rubber	Cross-linked Poly-Ethylene
Chemical group of the hose interior	N.B.R.	C.R.	S.I. (Q)	X.L.P.E.
Max. temperature range °C				
- Dry air	+90°C	+90°C	+180°C	+66°C
- Hot oil	+120°C	+60°C	-	+60°C
- Hot water	+90°C	+70°C	+100°C	+66°C
Min. temperature range °C	-20°C	-30°C	-60°C	-50°C
General resistance against:				
- Mineral oils and fats	excellent	good	moderate	good till 60°C
- Animal/vegetable oils/fats	excellent	good	moderate	good
- Acids diluted	good	excellent	excellent	excellent
- Acids concentrated	moderate/good	good	moderate	excellent
- Solvents:				
Aliphates, petrols	excellent	moderate/good	slightly	good
Aromatics: toluene, benzene	good	moderate	slightly	good
Esters, ethers, alcohols	bad	slightly/moderate	moderate	excellent
Chlorinated: tetra, tri, etc.	moderate	slightly	slightly	good
- Water absorption	good	good	excellent	very good
- Sunlight and Ozone	moderate	excellent	excellent	good
Elasticity	moderate/good	moderate/good	good	good
Resistance against deformation	good	good	moderate	slightly
Abrasion resistance	good	very good	slightly	moderate
Permeability	slightly	slightly	hardly slightly	slightly
Electrical insulation	bad	moderate/good	excellent	good
Hardness range (Shore A)	40 – 95	40 – 95	40 – 85	-
Flame resistance	slightly	good	moderate	bad
Tensile strength	15 – 20 Mpa	15 – 20 Mpa	10 – 20 Mpa	30 – 35 Mpa
Special properties	Mineral oil products, greases and fuels, anorganic acids at low concentration and temperature	Chemical resistant, ozone-aging and UV-resistant, weather resistant, flame resistant	Temperature resistant, cold resistant, ozone-aging resistant, odor- and tasteless	Chemical resistant, gas proof
Thermal properties	-30°C / +100°C	-45°C / +100°C	-60°C / +200°C short till 250°C	-50°C / +90°C

Chemical resistance tables

NBR	: Nitrile Butadiene Rubber
SBR	: Styrene Butadiene Rubber
NR	: Natural Rubber
PUR (AU)	: Polyurethane
XLPE	: Cross-linked Polyethylene
PVC	: Poly Vinyl Chloride
EPDM	: Ethylen Propylen Diene Monomer

Our application advice is done to the best of our knowledge. However, the advice is non-binding and does not relieve you of your own inspection. The application, use and processing of the products is beyond our control and is solely your responsibility. On regard to the warranty we refer to our delivery conditions.

A : Excellent service
 B : Limited service
 C : Not recommended

Medium	NBR	SBR	NR	PUR	UPE/ XLPE	PVC	EPDM
(Alpha) Methyl Styrene (25°C)	C	–	C	–	A	–	C
Acetaldehyde	C	B	B	B	A	–	A
Acetamide	C	–	C	–	A	–	A
Acetic Acid (100%)	–	C	C	C	C	–	C
Acetic Acid Anhydride (20°C)	C	A	B	C	A	–	A
Acetic Acid (60%)	–	C	B	C	A	–	A
Acetone	C	A	A	–	A	–	A
Acetonitrile	–	–	–	–	A	–	B
Acetophenone	C	–	C	–	A	–	A
Acetylacetone	C	–	C	–	A	–	A
Acid Salt (37%)	C	–	B	C	A	40°A	A
Acid Salt (20%)	B	–	B	–	A	40°A	A
Acryl Acid	C	–	C	–	C	–	A
Acrylonitrile	C	C	C	–	A	–	C
Adipic Acid	A	A	A	–	A	–	A
Allyl Alcohol	A	A	A	–	B	20°B	A
Alum	A	B	A	A	A	40°A	A
Aluminium Nitrate	A	–	A	–	B	–	A
Aluminium Chloride	A	–	A	B	A	60°A	A
Ammonia Solution (40°C)	–	A	–	–	–	–	–
Ammonium Persulphate	A	–	A	B	A	–	A
Ammonium Sulphate	A	A	A	A	A	60°A	A
Ammonium Nitrate	A	A	A	A	A	40°A	–
Ammonium Chloride	A	A	A	A	A	40°A	A
Ammonium Hydroxide	A	–	A	–	A	40°A	A
Ammonium Phosphate	A	A	A	A	A	60°A	A
Amyl Acetate	C	C	B	–	B	–	A
Amyl Alcohol	A	A	A	B	A	40°A	A
Aniline	C	C	C	–	A	–	A
Barium Chloride	A	–	A	A	A	–	A
Benzaldehyde	C	B	C	C	A	–	–
Benzene	C	C	C	C	A	–	C
Benzyl Alcohol	C	–	A	–	A	20°B	A
Benzyl Chloride (25°C)	C	–	C	–	C	–	C
Borax (Disodium Tetraborate)	A	A	A	A	A	40°A	A
Bromine	C	C	C	B	C	–	C
Bromine Benzene (25°C)	C	–	C	–	C	–	C
Bunker Oil	A	–	C	–	C	–	C
Butanone (Methyl Ethylketone)	C	–	B	–	A	–	A
Butyl Acetate	C	C	C	–	A	–	A
Butyl Aldehyde	C	–	C	–	A	–	A
Butyl Alcohol	A	A	A	C	A	40°A	A
Butyric Acid	C	–	C	–	A	–	A
Butyric Acid Ethyl	C	–	C	–	A	–	A
Butyl Ether	C	–	C	C	A	–	C
Calcium Hydroxide (Lime Water)	A	A	A	C	A	60°A	A
Calcium Hypochlorite	C	C	A	–	A	40°A	A
Calcium Nitrate	A	A	A	A	A	40°A	A
Calcium Chloride	A	A	A	A	A	40°A	A
Calcium Salt	A	–	A	–	A	–	A

Chemical resistance tables

NBR	: Nitrile Butadiene Rubber
SBR	: Styrene Butadiene Rubber
NR	: Natural Rubber
PUR (AU)	: Polyurethane
XLPE	: Cross-linked Polyethylene
PVC	: Poly Vinyl Chloride
EPDM	: Ethylen Propylen Diene Monomer

Our application advice is done to the best of our knowledge. However, the advice is non-binding and does not relieve you of your own inspection. The application, use and processing of the products is beyond our control and is solely your responsibility. On regard to the warranty we refer to our delivery conditions.

A : Excellent service
 B : Limited service
 C : Not recommended

Medium	NBR	SBR	NR	PUR	UPE/ XLPE	PVC	EPDM
Calcium Sulphide	A	–	A	A	A	–	A
Carbon Dioxide Gas	A	A	A	A	A	60°A	A
Carbon Tetrachloride Hydrogen	C	C	C	B	C	–	C
Carbon Disulphide	C	C	B	C	B	–	C
Carbonic Acid Gas	A	–	A	A	A	60°A	A
Caustic Soda (Sodium Hydroxide 20%)	B	B	B	B	A	40°A	A
Chloroacetic Acid (25%C)	C	C	C	C	A	–	–
Chlorobenzene (25°C)	C	C	C	C	A	–	–
Chlorodifluoridemetane (25°C)	–	–	–	–	–	–	–
Chloroform (Trichloromethane)	C	C	C	C	A	–	C
Chlorosulphonic Acid	C	C	C	C	C	–	–
Chlorine Water (0,5% Chlorine)	C	C	C	B	A	40°B	A
Chromic Acid (25% -40°C)	C	C	C	–	A	40°A	B
Citric Acid	A	A	A	A	A	40°A	A
Copper Cyanide	A	–	C	B	A	–	A
Copper Acetate	A	–	C	–	A	–	A
Cresol	C	C	C	C	C	20°B	–
Cresylic Acid	C	–	C	C	C	–	–
Cyclo Hexylamine	C	C	C	–	A	–	–
Cyclohexane	A	C	C	–	A	–	C
Cyclohexanol	A	C	A	C	A	60°A	A
Decahyronaphthalene	A	C	C	A	A	–	C
Decalin	A	C	C	A	A	–	C
Diacetone Alcohol	C	A	A	B	A	–	A
Dibutyl Phthalate	C	C	C	B	A	–	A
Dibutyl Sebecate	C	C	C	C	A	–	A
Dichloroethane	C	C	C	–	A	–	C
Dichloromethane (25°C)	C	C	C	C	C	–	C
Diesel Oil	A	C	C	B	A	40°A	C
Diethyl Ether	C	C	C	B	A	20°B	–
Diethylamine	C	C	C	B	A	20°B	–
Diethylene Glycol	A	A	A	B	A	–	A
Diisobutylene	–	C	C	–	A	–	C
Dimethyl Amine	C	C	C	–	A	20°B	–
Dimethyl Aniline	C	–	C	C	A	–	B
Dimethyl Formamide	C	C	C	C	A	–	A
Dimethyl Sulphoxide	C	–	C	–	–	–	A
Dioctyl Sebecate	C	C	C	B	A	–	A
Dioctyl Phthalate	C	C	C	–	A	–	A
Dioxane (Diethylene Oxide 60°C)	C	B	C	C	A	–	A
Ethyl Acrylate	C	–	C	–	A	–	–
Epichlorohydrin	C	–	C	C	A	–	A
Ethanol	A	A	A	B	A	–	A
Ethanolamine	–	–	A	–	A	–	A
Ethyl Ether	C	C	C	–	C	–	C
Ethyl Mercaptan	C	–	C	–	A	–	–
Ethyl Glycol	A	A	A	B	A	60°A	A
Ethyl Benzole	C	C	C	–	B	–	C
Ethyl Chloride (Dichlorethane)	C	C	C	–	A	–	C
Ethyl Alcohol (Ethanol)	A	A	A	B	A	–	A

Chemical resistance tables

NBR	: Nitrile Butadiene Rubber
SBR	: Styrene Butadiene Rubber
NR	: Natural Rubber
PUR (AU)	: Polyurethane
XLPE	: Cross-linked Polyethylene
PVC	: Poly Vinyl Chloride
EPDM	: Ethylen Propylen Diene Monomer

Our application advice is done to the best of our knowledge. However, the advice is non-binding and does not relieve you of your own inspection. The application, use and processing of the products is beyond our control and is solely your responsibility. On regard to the warranty we refer to our delivery conditions.

A : Excellent service
 B : Limited service
 C : Not recommended

Medium	NBR	SBR	NR	PUR	UPE/ XLPE	PVC	EPDM
Ethyl Acetate (Acetal)	C	B	C	–	A	–	A
Ethylene Glycolmono Ethylether Acetate	C	A	A	–	A	–	A
Ethylene Glycolmono Ethylether	A	–	A	–	A	–	A
Fatacids	A	–	C	A	B	60°A	A
Ferric Nitrate	A	–	A	–	A	–	A
Ferric Chloride	A	A	A	B	A	–	A
Ferric Sulfate	A	–	A	B	A	–	A
Fluosilicic Acid (50%)	C	A	C	–	A	–	A
Formaldehyde Solution (40%)	B	A	B	B	A	40°A	A
Formic Acid	C	B	C	–	A	–	A
Furfural	C	–	A	–	A	–	A
Furfural	C	–	A	–	A	–	A
Glacial Acetic Acid (Acetic Acid 100%)	C	C	B	C	C	–	C
Glucose	A	A	A	A	A	40°A	A
Glycols	A	A	A	B	A	60°A	A
Heating Oil ASTM-A (Isooctane)	A	C	C	B	A	–	C
Heating Oil	A	C	C	B	A	20°B	C
Heavy Petrol (Naphtalene)	C	C	B	C	C	–	C
Heptane	A	C	C	B	A	20°A	C
Hexane	A	C	C	B	A	20°A	C
Hexyl Alcohol	A	–	A	C	A	–	A
Hydrobromic Acid (Conc.)	C	–	C	C	C	20°A	A
Hydrocyanic Acid	B	–	A	B	A	–	A
Hydrofluoride Acid (75%)	C	B	B	B	A	20°B	A
Hydrogen Peroxide (35%)	C	C	B	B	–	–	A
Hydrogen Chloride (37%)	C	C	B	–	A	–	A
Isobutyl Acetate	C	–	C	–	A	–	A
Isophorone	C	–	C	C	A	–	A
Isopropanol (Isopropyl Alcohol)	A	A	A	B	A	20°A	A
Isopropyl Benzene (40°C)	C	–	C	–	A	–	C
Isopropyl Alcohol	A	A	A	B	A	20°A	A
Lead Acetate	A	A	A	A	A	60°A	A
Lead Arsenate	C	–	A	A	A	–	A
Light Petrol	A	–	C	–	A	–	C
Liquid Ammonia	A	–	A	C	A	60°A	A
Magnesium Caustic	A	–	A	A	A	–	A
Magnesium Chloride	A	A	A	A	A	–	A
Magnesium Sulphate	A	A	A	A	A	–	A
Mercury	A	A	A	A	A	60°A	A
Mercury Salt	A	A	A	–	A	40°A	A
Methanol (Methyl Alcohol)	A	A	A	B	A	40°A	A
Methyl Acetate	C	–	C	C	A	–	A
Methyl Amine (Solution 30% - 20°C)	C	B	A	–	A	20°B	B
Methyl Acrylate	C	C	C	–	A	–	–
Methyl Chloride Gas	C	C	C	C	B	–	C
Methyl Isobutyl Ketone	C	C	C	C	A	–	A
Methylene Chloride (20°C Dichlorometane)	C	C	C	C	C	–	C
Naphta	A	C	C	B	A	–	C
Naphtalene	C	C	C	B	C	–	C
Nickel Sulphate	A	A	A	B	A	–	A

Chemical resistance tables

NBR	: Nitrile Butadiene Rubber
SBR	: Styrene Butadiene Rubber
NR	: Natural Rubber
PUR (AU)	: Polyurethane
XLPE	: Cross-linked Polyethylene
PVC	: Poly Vinyl Chloride
EPDM	: Ethylen Propylen Diene Monomer

Our application advice is done to the best of our knowledge. However, the advice is non-binding and does not relieve you of your own inspection. The application, use and processing of the products is beyond our control and is solely your responsibility. On regard to the warranty we refer to our delivery conditions.

A : Excellent service
 B : Limited service
 C : Not recommended

Medium	NBR	SBR	NR	PUR	UPE/ XLPE	PVC	EPDM
Nitric Acid (60°C - 20%)	C	C	C	C	A	–	B
Nitric Acid 100%	C	C	C	C	C	–	C
Nitric Acid (Fuming 100%)	C	C	C	C	C	–	C
Nitro Propane	C	B	B	C	A	–	A
Nitro Benzene (40°C)	C	C	C	C	A	–	C
Nitrogen Gas	A	A	A	A	A	–	A
Octane	A	–	C	A	A	–	C
Oleic Acid	A	–	–	C	B	A	A
Oleum	C	C	C	C	C	–	C
Oxalic Acid	B	B	A	C	A	60°A	A
Ozone	C	C	C	A	B	20°A	A
Palmitic Acid	A	C	B	A	B	20°A	A
Parrafine (Alkane)	A	C	C	B	A	40°A	B
Perchlorethylene (20°C)	C	C	C	C	B	–	C
Petrol (Super)	A	C	C	C	A	–	C
Petrol with 50% Benzene	A	C	C	B	A	–	C
Petroleum Ether	A	C	C	B	A	60°A	C
Petroleum	A	C	C	A	A	20°A	C
Phenol (Carbolic Acid 60°C)	C	C	C	C	B	20°B	A
Phosphoric Acid (60°C)	B	A	B	C	A	40°A	A
Phosphoric Chloride (50°C)	C	–	C	–	B	–	–
Picric Acid (Alcohol Solution)	B	B	B	C	A	20°A	A
Potassium Chlorate	A	B	A	A	A	60°A	A
Potassium Chloride	A	A	A	A	A	60°A	A
Potassium Hydroxide Solution	B	–	A	A	A	40°A	A
Potassium Carbonate	A	A	A	B	A	40°A	A
Potassium Cyanide	A	A	A	B	A	60°A	A
Potassium Permanganate	C	B	C	A	A	40°A	A
Potassium Sulphate	A	B	A	A	A	40°A	A
Potassium Bromide	A	A	A	–	A	40°A	A
Potassium Iodide	A	A	A	–	A	60°A	A
Potassium Nitrate	A	A	A	A	A	60°A	A
Propionic Acid Ethyl Ester	C	C	A	–	A	60°A	A
Propyl Alcohol	A	A	A	B	A	20°A	A
Propyl Acetate	C	–	B	–	A	–	A
Pyrdine	C	C	C	C	A	–	B
Salt Solution	A	A	A	B	A	40°A	A
Silicone Grease	A	A	A	A	A	–	A
Silicone Oil	A	A	A	A	A	20°A	A
Silver Salt	A	B	–	A	A	40°A	A
Sodium Thiosulphate	A	A	A	B	A	40°A	A
Sodium Nitrate	A	A	A	A	A	40°A	A
Sodium Sulphide	A	A	A	A	A	40°A	A
Sodium Hypochloride (13%)	C	C	C	B	B	40°A	A
Sodium Sulphate	A	A	A	A	A	40°A	A
Sodium Phosphate	A	A	A	B	A	40°A	A
Sodium Silicate	A	A	A	B	A	40°A	A
Sodium Acetate	A	–	A	B	A	20°A	A
Sodium Perborate	A	–	A	–	A	–	A
Sodium Hypochlorite (13%)	C	C	C	B	B	40°A	A

Chemical resistance tables

NBR	: Nitrile Butadiene Rubber
SBR	: Styrene Butadiene Rubber
NR	: Natural Rubber
PUR (AU)	: Polyurethane
XLPE	: Cross-linked Polyethylene
PVC	: Poly Vinyl Chloride
EPDM	: Ethylen Propylen Diene Monomer

Our application advice is done to the best of our knowledge. However, the advice is non-binding and does not relieve you of your own inspection. The application, use and processing of the products is beyond our control and is solely your responsibility. On regard to the warranty we refer to our delivery conditions.

A : Excellent service
 B : Limited service
 C : Not recommended

Medium	NBR	SBR	NR	PUR	UPE/ XLPE	PVC	EPDM
Sodium Bisulphite	A	A	A	C	A	40°A	A
Sodium Chloride	A	A	A	B	A	40°A	A
Sodium Cyanide (30%)	A	–	A	B	A	–	A
Sodium Hydroxide (20%)	B	B	B	B	A	40°A	A
Sodium Carbonate	A	A	A	B	A	60°A	A
Spirits of Nitre (40°C - 40%)	C	B	C	C	–	40°A	B
Stearic Acid	A	A	A	A	A	60°A	A
Styrene Monomer (20°C)	C	C	B	C	A	–	C
Sugar	A	–	A	A	A	40°A	A
Sulfur Chloride	C	B	–	C	A	–	B
Sulphur Dioxide (Dry 60%)	C	B	C	B	A	60°A	A
Sulphuric Acid (10%)	C	B	C	B	A	20°B	A
Sulphuric Acid (96% -20°C)	C	B	C	C	A	C	C
Sulphuric Acid Anhydride (Sulphur Trioxide)	C	–	–	C	C	–	B
Sulphuric Acid (100% fuming)	C	B	C	C	C	C	C
Sulphuric Acid (20% - 50°C)	B	B	B	A	A	C	A
Sulphuric Acid (75% - 50°C)	C	B	C	C	A	C	B
Sulphuric Acid (50% - 50°C)	C	B	B	B	A	C	A
Tannin (Tannic Acid)	C	A	C	C	A	20°B	A
Turpentine	A	C	C	C	A	20°A	C
Test Fuel (White Spirit)	A	C	C	B	A	–	C
Tetrachlor Ethane	C	C	C	–	A	–	C
Tetrahydrofuran	C	C	C	–	B	–	C
Toluol (20°C)	C	C	C	C	B	–	C
Trichlor Ethylene	C	C	C	C	C	–	C
Trietamine	A	–	C	–	A	–	C
Triethanolamine (20°C)	A	C	A	C	A	20°B	A
Trimethyl Amine	A	–	C	–	A	–	C
Urea	A	A	A	B	A	40°A	A
Vinyl Acetate	C	C	C	–	A	–	A
Water	A	A	A	A	A	A	A
White Spirit	A	C	C	B	A	–	C
Wine Acid	A	A	A	A	A	–	A
Xylene	C	C	C	C	C	–	C
Zinc Acetate	A	C	A	C	A	–	A
Zinc Chloride	A	–	A	B	A	–	A
Zinc Sulfate	A	–	A	B	A	–	A

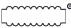
Water hoses

POLYFORM



Food quality water hose

limited chemical resistant.

Marking:  Polyform - Reg. EU 10/2011 - Dimension

Norm:	EN ISO 1307:2008, EU 10/2011 Cat. A, EU 10/2011 Cat. B, EU 10/2011 Cat. C, EU 1935/2004, LFGB	Min. temperature:	-20 °C
Material:	PVC	Max. temperature:	+60 °C
		Construction tube:	Smooth
		Cover:	Smooth
		Colour:	Transparent

Art.-no.	Ø Inner (mm)	Wall (mm)	Ø Outer (mm)	Weight (kg/mtr)	Length (mtr)
4041003005	3,0	1,0	5,0	0,016	100
4041004006	4,0	1,0	6,0	0,020	100
4041004007	4,0	1,5	7,0	0,032	100
4041005008	5,0	1,5	8,0	0,040	100
4041006009	6,0	1,5	9,0	0,045	100
4041006010	6,0	2,0	10,0	0,060	100
4041007010	7,0	1,5	10,0	0,051	100
4041008012	8,0	2,0	12,0	0,080	50
4041009013	9,0	2,0	13,0	0,088	50
4041010014	10,0	2,0	14,0	0,096	50
4041012016	12,0	2,0	16,0	0,112	50
4041013018	13,0	2,5	18,0	0,155	50
4041014019	14,0	2,5	19,0	0,165	50
4041015020	15,0	2,5	20,0	0,175	50
4041016022	16,0	3,0	22,0	0,230	50
4041018024	18,0	3,0	24,0	0,250	50
4041019027	19,0	4,0	27,0	0,370	50
4041020026	20,0	3,0	26,0	0,280	50
4041022028	22,0	3,0	28,0	0,300	50
4041025031	25,0	3,0	31,0	0,340	50
4041030037	30,0	3,5	37,0	0,470	50
4041032040	32,0	4,0	40,0	0,580	50
4041038048	38,0	5,0	48,0	0,860	50
4041050060	50,0	5,0	60,0	1,100	50

Application:

Transparent, smooth PVC hose without insertions. Crystal clear by using first choice PVC granulate. The hose can be used for various applications in the food and pharma industry. Can also be used for various industrial applications and as a cable protection hose.

Remark:

- Cutted length not possible

TRICOTECH®



Thermoplastic water hose

with special constructed knitted insertions.

Marking: Tricotech® Dimension - cadmiumfree

Norm:	EN ISO 1307:2008
Working pressure at 20°C:	10,0 bar
Bursting pressure:	25 bar
Min. temperature:	-10 °C
Max. temperature:	+60 °C
Compound tube:	PVC

Construction tube:	Smooth
Color tube:	Black
Compound cover:	PVC
Cover:	Smooth
Color cover:	Yellow
Reinforcements:	Braided textile plies

Art.-no.	Ø Inner (mm)	Wall (mm)	Ø Outer (mm)	Bending radius (mm)	Weight (kg/mtr)	Length (mtr)
4100012000	12,5	2,25	17,0	125	0,160	25/50
4100015000	15,0	2,5	20,0	125	0,190	50
4100019000	19,0	3,0	25,0	125	0,270	25/50
4100025000	25,0	3,5	32,0	125	0,420	50
4100032000	32,0	5,0	42,0	300	0,760	50
4100040000	40,0	5,0	50,0	350	0,960	50
4100050000	50,0	6,0	62,0	400	1,420	25

Application:

Smooth, flexible and torsion-free water hose that can be used as a water supply hose on construction sites, irrigation applications and is also frequently used as garden hose.

Remark:

- Cutted length not possible

We recommend assembly with:

5310:
Geka® couplings



see catalogue 21-K P.4

5354:
Geka® nozzle



see catalogue 21-K P.6

6060:
ABA clamps



see catalogue 21-K P.95

Water hoses

INDUFORM®/RL



Water hose
for medium duty applications.

Marking:  Induform®/RL PN 12 bar

Norm:	EN ISO 1307:2008	Color tube:	Black
Working pressure at 20°C:	12,0 bar	Compound cover:	PVC
Bursting pressure:	36 bar	Cover:	Smooth
Min. temperature:	-20 °C	Color cover:	Red
Max. temperature:	+60 °C	Longitudinal stripes:	1 yellow stripe
Compound tube:	PVC	Reinforcements:	Polyester plies
Construction tube:	Smooth		

Art.-no.	Ø Inner (mm)	Wall (mm)	Ø Outer (mm)	Bending radius (mm)	Weight (kg/mtr)	Length (mtr)
4130013000	13,0	3,0	19,0	80	0,205	40
4130019000	19,0	3,5	26,0	110	0,340	40
4130025000	25,0	4,0	33,0	150	0,500	40

Application:

High quality smooth water hose that is characterized by the strong cross-braided insertions and a production process in which the inner and outer walls are connected with each other with heat, which offers a much stronger adhesion than many glued alternatives. Hose can be used as a water supply hose at construction sites in industry, shipyards and other locations where higher quality requirements are set for a water hose.

Remark:

- Cutted length not possible

We recommend assembly with:

5310:
Geka® couplings



see catalogue 21-K P.4

5354:
Geka® nozzle



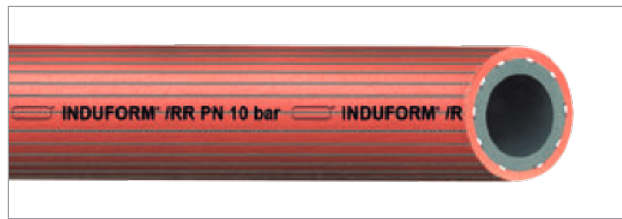
see catalogue 21-K P.6

6060:
ABA clamps

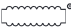


see catalogue 21-K P.95

INDUFORM®/RR



Water hose
for medium duty applications.

Marking:  Induform®/RR PN 10 bar

Norm:	EN ISO 1307:2008	Construction tube:	Smooth
Working pressure at 20°C:	10,0 bar	Color tube:	Black
Bursting pressure:	30 bar	Compound cover:	PVC
Min. temperature:	-20 °C	Cover:	Ribbed
Max. temperature:	+60 °C	Color cover:	Red
Compound tube:	PVC	Reinforcements:	Polyester plies

Art.-no.	Ø Inner (mm)	Wall (mm)	Ø Outer (mm)	Bending radius (mm)	Weight (kg/mtr)	Length (mtr)
3000013000	13,0	3,0	19,0	80	0,205	40/100
3000019000	19,0	3,5	26,0	110	0,340	40
3000025000	25,0	4,0	33,0	150	0,495	40
3000032000	32,0	6,0	44,0	180	0,975	40

Application:

High quality ribbed water hose that is characterized by the strong cross-braided insertions and a production process in which the inner and outer walls are connected with each other with heat, which offers a much stronger adhesion than many glued alternatives. Hose can be used as a water supply hose at construction sites in industry, shipyards and other locations where higher quality requirements are set for a water hose. Due to its special construction, hose is extremely suitable for reel applications.

Remark:

- Cutted length not possible

We recommend assembly with:

5310:
Geka® couplings



see catalogue 21-K P.4

5354:
Geka® nozzle



see catalogue 21-K P.6

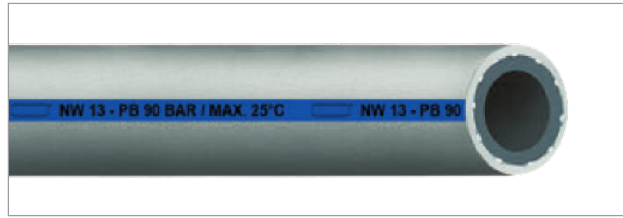
6060:
ABA clamps



see catalogue 21-K P.95

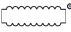
Water hoses

LAVAFORM



Waterhose for washing machines

also suitable for dishwashers.

Marking:  Dimension - PB 90 bar / max. 25°C

Norm:	EN ISO 1307:2008	Color tube:	Black
Working pressure at 20°C:	30,0 bar	Compound cover:	Thermoplastic elastomer
Bursting pressure:	90 bar	Cover:	Smooth
Min. temperature:	-20 °C	Color cover:	Grey
Max. temperature:	+60 °C	Longitudinal stripes:	1 blue stripe
Compound tube:	Thermoplastic elastomer	Reinforcements:	Polyester plies
Construction tube:	Smooth		

Art.-no.	Ø Inner (mm)	Wall (mm)	Ø Outer (mm)	Weight (kg/mtr)	Length (mtr)
4011013000	13,0	3,5	20,0	0,250	40

Application:

Specially constructed to withstand the water pressure shock created in washing machines. The high pressure safety factor prevents the hose from bursting if the pressure shocks occur. Especially provided with a blue stripe to alert the user that this is a hose for cold water applications.

Remark:

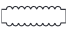
- Cutted length not possible

LAVAFORM/EXTRA



Water hose for washing machines

also suitable for dishwashers.

Marking:  Dimension - max. 95°C - PB 90 bar at 25°C

Norm:	EN ISO 1307:2008	Color tube:	Black
Working pressure at 20°C:	30,0 bar	Compound cover:	Thermoplastic elastomer
Bursting pressure:	90 bar	Cover:	Smooth
Min. temperature:	-20 °C	Color cover:	Grey
Max. temperature:	+95 °C	Longitudinal stripes:	1 red stripe
Compound tube:	Thermoplastic elastomer	Reinforcements:	Polyester plies
Construction tube:	Smooth		

Art.-no.	Ø Inner (mm)	Wall (mm)	Ø Outer (mm)	Weight (kg/mtr)	Length (mtr)
4012010000	10,0	3,5	17,0	0,200	40
4012013000	13,0	3,5	20,0	0,250	40

Application:

Specially constructed to withstand the water pressure shock created in washing machines. The high pressure safety factor prevents the hose from bursting if the pressure shocks occur. Especially provided with a red stripe to alert the user that this is a hose for hot water applications.

Remark:

- Cutted length not possible

Water hoses

CALORFORM



Water hose

suitable for salt and hot water.

Norm:	EN ISO 1307:2008
Working pressure:	20 bar
Bursting pressure:	60 bar
Min. temperature:	-40 °C
Max. temperature:	+95 °C
Temperature peak:	+110 °C
Electr. resistance tube:	Electrical conductive <math><10^6 \Omega</math>
Electr. resistance cover:	Electrical conductive <math><10^6 \Omega</math>
Compound tube:	EPDM

Construction tube:	Extruded
Color tube:	Black
Compound cover:	EPDM
Cover:	Smooth
Color cover:	Black
Resistance cover:	Ageing resistant, Ozone resistant, UV resistant, Weather resistant
Longitudinal stripes:	4 yellow stripes
Reinforcements:	Textile plies

Art.-no.	Ø Inner (mm)	Wall (mm)	Ø Outer (mm)	Bending radius (mm)	Weight (kg/mtr)	Length (mtr)
3126010000	10,0	3,5	17,0	65	0,210	40
3126013000	13,0	3,5	20,0	80	0,260	40
3126016000	16,0	3,5	23,0	100	0,320	40
3126019000	19,0	4,0	27,0	120	0,430	40
3126025000	25,0	4,5	34,0	150	0,670	40

Application:

Highly flexible, kink-resistant industrial water hose. This hose is used where there is a need for a high-quality product that exceeds the requirements of a regular water hose in terms of temperature and / or wear resistance. Hose is used on construction sites, for various industrial applications and in shipyards. The hose can also be used as an air hose. Please note that the fourfold certainty 4:1 for compressed air applications is taken into account. Hose has limited chemical resistance.

Remark:

- Cutted length not possible

We recommend assembly with:

5310:
Geka® couplings



see catalogue 21-K P.4

5354:
Geka® nozzle



see catalogue 21-K P.6

6060:
ABA clamps



see catalogue 21-K P.95

PYTHON



Water hose
for salt and hot water.

Marking: Made in Italy (by ITR/TREG) Python 20 bar
nitrosamine free logo

Norm:	EN ISO 1307:2008
Working pressure:	20 bar
Bursting pressure:	60 bar
Min. temperature:	-40 °C
Max. temperature:	+110 °C
Temperature peak:	+130 °C
Electr. resistance tube:	Electrical conductive <math><10^6 \Omega</math>
Compound tube:	EPDM

Construction tube:	Extruded
Color tube:	Black
Compound cover:	EPDM
Color cover:	Green
Resistance cover:	Ageing resistant, Ozone resistant, UV resistant, Weather resistant
Reinforcements:	Textile plies

Art.-no.	Ø Inner (mm)	Wall (mm)	Ø Outer (mm)	Bending radius (mm)	Cover	Weight (kg/mtr)	Length (mtr)
3020013020	13,0	3,5	20,0	80	Smooth	0,260	40
3020019000	19,0	4,0	27,0	110	Smooth	0,410	40
3020025000	25,0	4,5	34,0	150	Smooth	0,600	40/80
3020032000	32,0	6,0	44,0	320	Fabric finish	0,980	40

Application:

The hose is designed for air, cold and hot water applications and also has limited chemical resistance. Due to its solid design, this hose is often used in shipyards as a high-quality, robust deck washing hose.

Remark:

- Cutted length not possible

We recommend assembly with:

5310:
Geka® couplings



see catalogue 21-K P.4

5354:
Geka® nozzle



see catalogue 21-K P.6

6060:
ABA clamps



see catalogue 21-K P.95

Water hoses

TRIX ROTSTRAHL®



Water hose

for salt and hot water, kink free.

Marking: ContiTech Trix Rotstrahl® DN .. PN .. bar Made in Germany

Norm:	EN ISO 1307:2008
Min. temperature:	-40 °C
Max. temperature:	+100 °C
Compound tube:	EPDM
Construction tube:	Extruded
Color tube:	Black

Compound cover:	EPDM
Color cover:	Black
Resistance cover:	Ageing resistant, Ozone resistant, UV resistant, Weather resistant
Longitudinal stripes:	6 red stripes
Reinforcements:	Textile plies

Art.-no.	Ø Inner (mm)	Wall (mm)	Ø Outer (mm)	WP (bar)	BP (bar)	Bending radius (mm)	Cover	Weight (kg/mtr)	Length (mtr)
3025013000	13,0	3,0	19,0	20	60	50	Smooth	0,245	40
3025016000	16,0	3,5	23,0	20	60	60	Smooth	0,330	40
3025019000	19,0	4,0	27,0	20	60	65	Smooth	0,435	40
3025025000	25,0	4,5	34,0	20	60	110	Smooth	0,580	40
3025032000	32,0	5,5	43,0	15	45	170	Fabric finish	0,890	40
3025038000	38,0	6,0	50,0	15	45	200	Fabric finish	1,100	40
3025050000	50,0	7,0	64,0	10	30	300	Fabric finish	1,565	40

Application:

Very flexible robust water hose that is used by commercial companies as well as public works in industry, agriculture and gardening. Also suitable for many other heavy applications. The ideal hose for cleaning and irrigation, for filling, spraying, rinsing and emptying.

Remark:

- Cutted length not possible

We recommend assembly with:

5310:
Geka® couplings



see catalogue 21-K P.4

5354:
Geka® nozzle



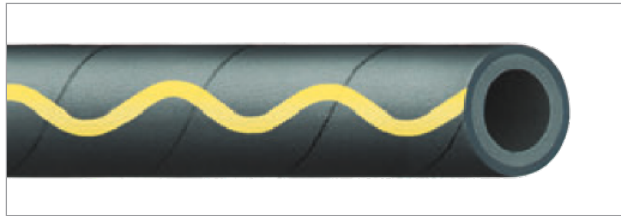
see catalogue 21-K P.6

6060:
ABA clamps



see catalogue 21-K P.95

GOLDSCHLANGE®



EPDM water hose

for heavy duty applications. Kink and impact resistant. It is allowed to drive over the hose.

Norm:	EN ISO 1307:2008
Min. temperature:	-30 °C
Max. temperature:	+100 °C
Max. temperature steam cleaning:	+130 °C
Max. cleaning time with steam:	30 minutes without pressure
Compound tube:	EPDM
Construction tube:	Smooth

Color tube:	Black
Compound cover:	CR
Cover:	Fabric finish
Color cover:	Black
Resistance cover:	Abrasion resistant, Ageing resistant, Oil resistant, Ozone resistant, UV resistant, Weather resistant
Reinforcements:	Textile plies

Art.-no.	Ø Inner (mm)	Wall (mm)	Ø Outer (mm)	WP (bar)	Bending radius (mm)	Weight (kg/mtr)	Length (mtr)
3026013000	13,0	3,9	20,8	30	50	0,225	40
3026019000	19,0	4,4	27,8	25	80	0,385	40
3026025000	25,0	4,5	34,0	20	160	0,490	40

Application:

This high-quality water and cleaning hose is a brand product of the highest quality. A tool which is considered superior because it is robust, nearly indestructible, durable and very versatile. GOLDSCHLANGE® is the right hose for demanding applications. A product that can handle all challenges. Whether on the construction site, in the field or on machines, devices or in containers.

Remark:

- Cutted length not possible

We recommend assembly with:

5310:
Geka® couplings



see catalogue 21-K P.4

5354:
Geka® nozzle



see catalogue 21-K P.6

6060:
ABA clamps



see catalogue 21-K P.95


Water hoses

PYROFLAT®



Layflat firefighting hose

with high tensile strength and flat collapsible.

Marking:  Pyroflat®

Norm:	EN ISO 1307:2008	Compound cover:	Polyurethane coating
Min. temperature:	-40 °C	Color cover:	Red
Max. temperature:	+80 °C	Resistance cover:	Abrasion resistant, UV resistant
Compound tube:	EPDM	Reinforcements:	2 plies warp polyester threads
Color tube:	Black		

Art.-no.	Ø Inner (mm)	Wall (mm)	Ø Outer (mm)	Measured flat (mm)	WP at 20°C (bar)	BP (bar)	Weight (kg/mtr)	Length (mtr)
4022038000	38,0	1,6	41,2	60	20,0	50	0,185	20/30/50
4022050000	52,0	1,8	55,6	82	20,0	50	0,260	20/30/50/100
4022063000	65,0	1,8	68,6	100	20,0	50	0,310	20/50/100
4022075000	75,0	1,8	78,6	118	20,0	50	0,400	20/30/50/100
4022100000	102,0	2,2	106,4	160	12,0	30	0,640	20/30/50/100

Application:

High-quality textile braided, flat collapsible, very flexible, lightweight water supply and discharge hose that is frequently used in firefighting, irrigation in agriculture and gardening, shipping, department of defense and many other industrial applications. Hose is extremely wear-resistant due to the cover that is treated with a special wear-resistant coating. Inner wall is seawater resistant and resistant to various chemicals.

Remark:

- Cutted length possible

We recommend assembly with:

5110:
Storz couplings

see catalogue 21-K P.12



EUROLON®



Layflat PVC water hose

Norm:	EN ISO 1307:2008
Min. temperature:	-20 °C
Max. temperature:	+60 °C
Compound tube:	PVC

Color tube:	Blue
Compound cover:	PVC
Color cover:	Blue

Art.-no.	Ø Inner (mm)	Wall (mm)	Ø Outer (mm)	Measured flat (mm)	WP at 20°C (bar)	Weight (kg/mtr)	Length (mtr)
4010025000	25,0	2,0	29,0	39	7,0	0,180	50
4010032000	32,0	2,0	36,0	50	7,0	0,210	100
4010038000	38,0	2,0	42,0	60	7,0	0,240	100
4010050000	51,0	2,0	55,0	82	7,0	0,350	100
4010063000	63,0	2,0	67,0	99	7,0	0,450	100
4010075000	76,0	2,0	80,0	118	6,0	0,610	100
4010100000	102,0	2,0	106,0	160	6,0	0,920	100
4010125000	127,0	2,0	131,0	196	6,0	1,150	50
4010150000	152,0	2,0	156,0	239	6,0	1,570	50
4010200000	203,0	2,0	207,0	319	4,0	2,150	50

Application:

High-quality flat collapsible water supply and discharge hose, can be used as a sprinkler hose in agriculture and gardening. Also suitable for water treatment on construction sites and in industry. Hose is unique because of its advanced production method (one-way extrusion) in which the inserts are incorporated into the material during the extrusion process. The hose consists of one piece and is therefore less vulnerable to mechanical damage and leakage is reduced to a minimum. The hose differs qualitatively from various other products available on the market.

Remark:

- Cutted length possible

We recommend assembly with:

5110:
Storz couplings



see catalogue 21-K P.12

6060:
ABA clamps



see catalogue 21-K P.95

Water hoses

AGRIFLAT



Layflat water hose

extremely resilient due to heavy tensile inserts.

Marking:  Agriflat - dimension

Norm:	EN ISO 1307:2008
Min. temperature:	-20 °C
Temperature peak:	+100 °C
Max. temperature hot water:	+80 °C
Compound tube:	NBR/PVC
Color tube:	Black

Compound cover:	NBR/PVC
Cover:	Ribbed
Color cover:	Black
Resistance tube:	Oil resistant, Petrol resistant
Resistance cover:	Ageing resistant, Ozone resistant, UV resistant, Weather resistant

Art.-no.	Ø Inner (mm)	Wall (mm)	Ø Outer (mm)	Measured flat (mm)	WP at 20°C (bar)	Max. WP air (bar)	BP (bar)	Weight (kg/mtr)	Length (mtr)
3070019000	20,0	2,0	24,0	30	25,0	18	75	0,180	20/100
3070025000	26,0	2,2	30,4	39	25,0	18	75	0,210	20/100
3070032000	32,0	2,2	36,4	50	20,0	15	60	0,240	100
3070038000	38,0	2,3	42,6	60	16,0	12	50	0,300	20/100
3070050000	52,0	2,5	57,0	82	16,0	12	50	0,400	20/100
3070075000	76,0	2,9	81,8	118	16,0	12	50	0,650	20/100
3070090000	90,0	3,3	96,6	141	16,0	12	50	0,900	100
3070100000	102,0	3,3	108,6	160	16,0	12	50	1,000	20/100
3070125000	127,0	3,5	134,0	196	14,0	10	42	1,400	20/100
3070150000	152,0	3,7	159,4	239	14,0	10	42	1,800	20/50
3070200000	203,0	3,9	210,8	319	10,0	7	30	2,600	50

Application:

Hose is used for various agricultural applications (dung transport and irrigation / sprinkling), firefighting, discharge and supply of industrial water (including hot water), pumps, sewer cleaning, cable protection and various other heavy industrial applications. Hose is also suitable for use with air. Limited acid, lye and dung resistant. The inserts are fully embedded in the rubber material, which means there is a very small chance of mechanical damage.

Remark:

- Cutted length possible

We recommend assembly with:

5721:
Perrot couplings



see catalogue 21-K P.23

5110:
Storz couplings



see catalogue 21-K P.12

6202:
Mikalor Supra -
clamps



see catalogue 21-K P.98

INDUCORD®



Water hose for industrial applications

suitable for industrial water, dung, mud and waste water, strong and robust.

Marking:  Inducord® Water / Wasser PN 10 bar

Norm:	EN ISO 1307:2008	Construction tube:	Smooth
Working pressure:	10 bar	Color tube:	Black
Bursting pressure:	30 bar	Compound cover:	SBR
Min. temperature:	-20 °C	Cover:	Fabric finish
Max. temperature:	+70 °C	Color cover:	Black
Compound tube:	SBR	Reinforcements:	Textile plies

Art.-no.	Ø Inner (mm)	Wall (mm)	Ø Outer (mm)	Weight (kg/mtr)	Length (mtr)
3040022000	22,0	4,0	30,0	0,440	40
3040025000	25,0	5,0	35,0	0,640	40
3040028000	28,0	5,0	38,0	0,720	40
3040032000	32,0	5,5	43,0	0,910	40
3040035000	35,0	5,5	46,0	0,970	40
3040038000	38,0	6,0	50,0	1,160	40
3040040000	40,0	6,0	52,0	1,210	40
3040042000	42,0	6,0	54,0	1,270	40
3040045000	45,0	6,0	57,0	1,350	40
3040048000	48,0	6,0	60,0	1,430	40
3040050000	51,0	6,5	64,0	1,640	40
3040060000	60,0	6,5	73,0	1,900	40
3040063000	63,5	7,0	77,5	2,200	40
3040075000	76,0	7,0	90,0	2,500	40
3040080000	80,0	7,0	94,0	2,700	40
3040090000	90,0	7,0	104,0	3,000	40
3040100000	102,0	7,0	116,0	3,300	40
3040110000	110,0	8,0	126,0	4,100	20
3040125000	127,0	8,5	144,0	5,000	20
3040150000	152,0	9,0	170,0	6,300	20
3040200000	203,0	10,5	224,0	9,900	20
3040250000	254,0	10,5	275,0	12,200	10

Application:

High quality rubber hose for heavy industrial applications, agriculture, infrastructure and gardening. Hose is also frequently used in the dredging industry where the wall thickness and flexibility in combination with its abrasion resistance ensures very good performance. Other dimensions can be produced on request.

Remark:

- Cutted length possible

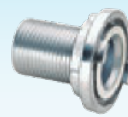
We recommend assembly with:

5510:
Kamllok couplings



see catalogue 21-K P.27

5124:
Storz couplings



see catalogue 21-K P.13

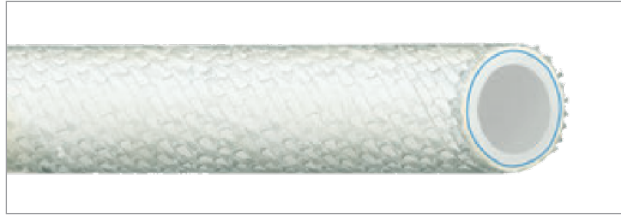
6202:
Mikalor Supra -
clamps



see catalogue 21-K P.98

Water hoses

INDUCORD®/GLASFIBER



Industrial water hose with heat resistant glasfiber cover

Norm:	EN ISO 1307:2008	Compound tube:	EPDM
Working pressure:	20 bar	Construction tube:	Smooth
Bursting pressure:	60 bar	Color tube:	White
Max. temperature:	+100 °C	Compound cover:	EPDM
Temperature radiation heat:	+550 °C	Cover:	Glasfiber braiding
Electr. resistance tube:	Insulating >10 ⁹ Ω	Color cover:	White
Electr. resistance cover:	Insulating >10 ⁹ Ω	Reinforcements:	Textile plies

Art.-no.	Ø Inner (mm)	Wall (mm)	Ø Outer (mm)	Bending radius (mm)	Weight (kg/mtr)	Length (mtr)
3042013025	13,0	6,0	25,0	110	0,480	40
3042019031	19,0	6,0	31,0	160	0,690	40
3042025039	25,0	7,0	39,0	200	0,960	40
3042032048	32,0	8,0	48,0	260	1,370	40
3042038058	38,0	10,0	58,0	310	1,950	40
3042040057	40,0	8,5	57,0	320	1,740	40
3042042000	42,0	9,0	60,0	340	1,940	40
3042045062	45,0	8,5	62,0	360	1,920	40
3042050000	50,0	10,0	70,0	400	2,550	40
3042076096	76,0	10,0	96,0	610	3,720	40

Application:

Hose is used at melting furnaces, steel production, glass factories, foundries and other locations with high ambient temperatures. The heat-resistant fiberglass cover protects the hose against extremely high ambient temperatures, protecting the other parts of the hose, allowing it to be used as a cooling water hose for a long time.

Remark:

- Cutted length possible

We recommend assembly with:

5615:
Flanges

see catalogue 21-K P.56



5560:
Safety clamps

see catalogue 21-K P.106



TEMPERFORM/RED



Cooling hose

for injection molding machines.

Marking:  TEMPERFORM -20°C / +140°C Wasser/Water

Norm:	EN ISO 1307:2008
Working pressure at 20°C:	20,0 bar
Bursting pressure:	60 bar
Min. temperature:	-20 °C
Max. temperature:	+140 °C
Compound tube:	EPDM
Construction tube:	Extruded

Color tube:	Black
Compound cover:	EPDM
Cover:	Smooth
Color cover:	Red
Resistance cover:	Ozone resistant, UV resistant
Reinforcements:	Textile plies

Art.-no.	Ø Inner (mm)	Wall (mm)	Ø Outer (mm)	Bending radius (mm)	Weight (kg/mtr)	Length (mtr)
3127009000	9,5	4,25	18,0	75	0,265	40
3127013000	12,7	4,65	22,0	100	0,365	40

Application:

Often used in injection molding machines in the thermoplastics industry. Applied as cooling water hose for hot and cold water in, among other things, the injection molding of plastics where the injected plastic in the molds must be evenly cooled in order to obtain an optimal end result. Kink-resistant, dimensionally stable and extremely flexible hose.

Remark:

- Not suitable for steam applications!
- Cutted length not possible

Water hoses

TEMPERFORM/BLUE



Cooling hose

for injection molding machines.

Marking:  Temperform -20°C / +140°C Wasser/Water

Norm:	EN ISO 1307:2008
Working pressure at 20°C:	20,0 bar
Bursting pressure:	60 bar
Min. temperature:	-20 °C
Max. temperature:	+140 °C
Compound tube:	EPDM
Construction tube:	Extruded

Color tube:	Black
Compound cover:	EPDM
Cover:	Smooth
Color cover:	Blue
Resistance cover:	Ozone resistant, UV resistant
Reinforcements:	Textile plies

Art.-no.	Ø Inner (mm)	Wall (mm)	Ø Outer (mm)	Bending radius (mm)	Weight (kg/mtr)	Length (mtr)
3128009000	9,5	4,25	18,0	75	0,265	40
3128013000	12,7	4,65	22,0	100	0,368	40

Application:

Often used in injection molding machines in the thermoplastics industry. Applied as cooling water hose for hot and cold water in, among other things, the injection molding of plastics where the injected plastic in the molds must be evenly cooled in order to obtain an optimal end result. Kink-resistant, dimensionally stable and extremely flexible hose.

Remark:

- Not suitable for steam applications!
- Cutted length not possible

MP 20



Highly flexible multi purpose hose

Marking: MP 20 - EPDM Multi Purpose PN 20 bar DN ..

Norm:	EN ISO 1307:2008
Working pressure:	20 bar
Bursting pressure:	80 bar
Min. temperature:	-40 °C
Max. temperature:	+120 °C
Temperature peak:	+140 °C
Electr. resistance tube:	Electrical conductive <math><10^6 \Omega</math>
Electr. resistance cover:	Electrical conductive <math><10^6 \Omega</math>
Compound tube:	EPDM

Construction tube:	Smooth
Color tube:	Black
Compound cover:	EPDM
Cover:	Smooth
Color cover:	Black
Resistance cover:	Ageing resistant, Weather resistant
Longitudinal stripes:	3 blue stripes
Reinforcements:	Textile plies

Art.-no.	Ø Inner (mm)	Wall (mm)	Ø Outer (mm)	Bending radius (mm)	Weight (kg/mtr)	Length (mtr)
3129010000	10,0	3,5	17,0	60	0,210	40
3129013000	13,0	4,0	21,0	80	0,300	40
3129019000	19,0	4,5	28,0	115	0,470	40
3129025000	25,0	5,0	35,0	150	0,670	40

Application:

High-quality original rubber hose suitable for air, water and various chemicals in industry and agriculture.

Remark:

- Not suitable for steam applications!
- Cutted length not possible

We recommend assembly with:

5310:
Geka® couplings



see catalogue 21-K P.4

5354:
Geka® nozzle



see catalogue 21-K P.6

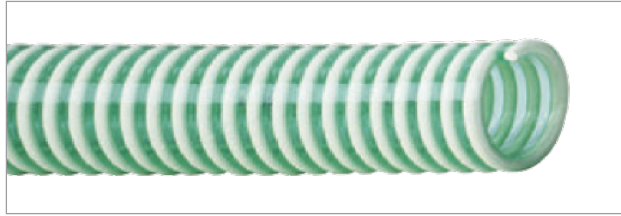
6060:
ABA clamps



see catalogue 21-K P.95

Water hoses

COSMO®



Thermoplastic suction hose

Marking:  Cosmo® - Dimension

Norm:	EN ISO 1307:2008	Color tube:	Green transparent
Vacuum:	0,60 bar	Compound cover:	PVC
Min. temperature:	-15 °C	Cover:	Slightly corrugated
Max. temperature:	+60 °C	Color cover:	Green transparent
Compound tube:	PVC	Reinforcements:	Rigid PVC spiral
Construction tube:	Smooth	Color spiral:	White

Art.-no.	Ø Inner (mm)	Ø Outer (mm)	Bending radius (mm)	Weight (kg/mtr)	Length (mtr)
4400020000	20,0	26,0	80	0,230	50
4400025000	25,0	31,0	100	0,280	50
4400032000	32,0	39,0	128	0,380	50
4400038000	38,0	45,0	152	0,480	50
4400050000	51,0	59,0	204	0,750	50
4400060000	60,0	69,0	240	0,970	50
4400063000	63,0	72,0	252	1,000	50
4400075000	76,0	86,0	304	1,350	50
4400090000	90,0	102,0	360	1,800	50
4400100000	102,0	114,0	408	2,200	50

Application:

Flexible, translucent, lightweight hose for suction of water under light working conditions for both industrial and agricultural applications. The Cosmo can also be used as a pond hose in combination with light vacuum pumps. In addition, the hose is also frequently used on construction sites for water treatment.

Remark:

- We recommend using cord for hose assembly
- Cutted length possible

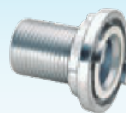
We recommend assembly with:

5510:
Kamlok couplings



see catalogue 21-K P.27

5124:
Storz couplings



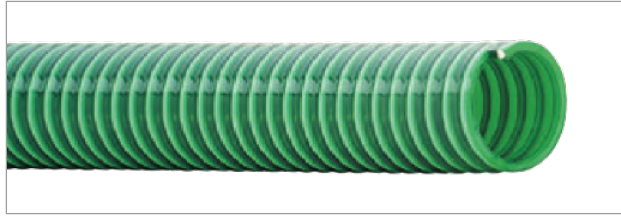
see catalogue 21-K P.13

6200:
Super clamps



see catalogue 21-K P.99

COSMO®/ELASTICO



Thermoplastic suction hose
extreme flexible multi purpose hose.

Marking:  Cosmo® Elastico - Dimension

Norm:	EN ISO 1307:2008	Color tube:	Dark green transparent
Vacuum:	0,60 bar	Compound cover:	PVC
Min. temperature:	-15 °C	Cover:	Slightly corrugated
Max. temperature:	+60 °C	Color cover:	Dark green transparent
Compound tube:	PVC	Reinforcements:	Rigid PVC spiral
Construction tube:	Smooth	Color spiral:	White

Art.-no.	Ø Inner (mm)	Ø Outer (mm)	Bending radius (mm)	Weight (kg/mtr)	Length (mtr)
4405040000	40,0	47,0	160	0,560	50
4405050000	51,0	59,0	204	0,850	50

Application:

Flexible, translucent, lightweight hose for suction of water under light working conditions for both industrial and agricultural applications. The Cosmo/Elastico can also be used as a pond hose in combination with light vacuum pumps. In addition, the hose is also frequently used on construction sites for water treatment. This hose is also very suitable for the passage of slurry on slurry injectors, trailing shoe system and it can serve as a seed feed hose through the smooth inner wall.

Remark:

- Cutted length possible

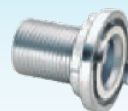
We recommend assembly with:

5510:
Kamllok couplings



see catalogue 21-K P.27

5124:
Storz couplings



see catalogue 21-K P.13

6202:
Mikalor Supra -
clamps



see catalogue 21-K P.98

Water hoses

ARMOFLEX®



Alimentary suction and discharge hose
for heavy duty circumstances.

Marking:  Armoflex® - Diameter - Reg. EU 10/2011

Norm:	EN ISO 1307:2008, EU 10/2011 Cat. A, EU 10/2011 Cat. B, EU 10/2011 Cat. C, EU 1935/2004, LFGB	Compound tube:	Soft PVC
Vacuum:	0,90 bar	Construction tube:	Smooth
Min. temperature:	-15 °C	Color tube:	Transparent
Max. temperature:	+60 °C	Compound cover:	Soft PVC
		Cover:	Smooth
		Color cover:	Transparent
		Reinforcements:	Steel spiral

Art.-no.	Ø Inner (mm)	Wall (mm)	Ø Outer (mm)	WP at 20°C (bar)	Bending radius (mm)	Weight (kg/mtr)	Length (mtr)
4480010000	10,0	3,0	16,0	10,0	30	0,200	30
4480012000	12,0	3,0	18,0	9,0	36	0,210	30
4480014000	14,0	3,0	20,0	9,0	42	0,230	50
4480016000	16,0	3,0	22,0	9,0	48	0,260	50
4480018000	18,0	3,0	24,0	8,0	54	0,320	50
4480020000	20,0	3,5	27,0	8,0	60	0,360	50
4480025000	25,0	4,0	33,0	8,0	75	0,500	50
4480032000	32,0	4,0	40,0	8,0	96	0,680	50
4480038000	38,0	4,5	47,0	7,0	114	0,820	50
4480040000	40,0	4,5	49,0	7,0	120	0,900	50
4480045000	45,0	4,5	54,0	6,0	135	1,100	50
4480050000	51,0	5,0	61,0	5,0	153	1,280	50
4480060000	60,0	5,5	71,0	5,0	180	1,750	30
4480063000	63,0	6,0	75,0	5,0	189	1,800	30
4480075000	76,0	6,0	88,0	4,0	228	2,400	30
4480080000	80,0	6,5	93,0	4,0	240	2,570	30
4480090000	90,0	6,5	103,0	4,0	270	2,950	20
4480100000	102,0	7,0	116,0	3,0	306	3,800	20
4480110000	110,0	7,5	125,0	3,0	330	4,200	20
4480125000	127,0	8,0	143,0	3,0	381	4,800	20
4480150000	152,0	8,5	169,0	2,0	456	6,500	20

Application:

Very flexible and robust PVC hose. Suitable for transit of for example (industry) water, mud, slurry and various other liquids. Extremely suitable for the transport of liquid food, as the hose is fully certified for the various food categories according to the European regulation EU 10/2011. The Armoflex hose is also frequently installed on slurry injectors in the agricultural sector.

Remark:

- Regarding the overpressure we would like to refer to the guidelines for the right use of the hoses which are mentioned on our website
- Cutted length possible

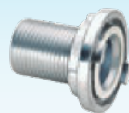
We recommend assembly with:

5721:
Perrot couplings



see catalogue 21-K P.23

5124:
Storz couplings



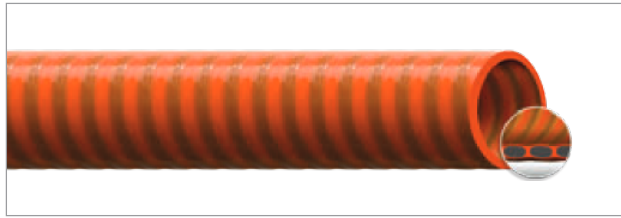
see catalogue 21-K P.13

6202:
Mikalor Supra -
clamps

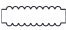


see catalogue 21-K P.98

QUADRIFLEX



Thermoplastic suction hose

Marking:  Quadriflex - Dimension

Norm:	EN ISO 1307:2008	Color tube:	Orange
Vacuum:	0,90 bar	Compound cover:	PVC
Min. temperature:	-25 °C	Cover:	Smooth
Max. temperature:	+60 °C	Color cover:	Orange
Compound tube:	Soft PVC	Reinforcements:	Rigid PVC spiral
Construction tube:	Smooth	Color spiral:	Anthracite

Art.-no.	Ø Inner (mm)	Wall (mm)	Ø Outer (mm)	Bending radius (mm)	Weight (kg/mtr)	Length (mtr)
4460050000	51,0	4,5	60,0	204	0,950	50
4460075000	76,0	5,0	86,0	304	1,600	50
4460080000	80,0	5,0	90,0	320	1,700	50
4460090000	90,0	5,0	100,0	360	1,950	50
4460100000	102,0	6,0	114,0	408	2,420	50
4460110000	110,0	5,5	121,0	440	2,600	30
4460125000	127,0	6,5	140,0	508	3,300	20
4460150000	152,0	7,5	167,0	608	4,400	4/5/20

Application:

For transport of (industrial) water and slurry. The hose has been used to full satisfaction in the public sector and in agriculture for years. The Quadriflex has an oval spiral instead of round, resulting in a significant weight reduction and a smooth outer wall. The smooth outer wall ensures that the hose does not get stuck behind well edges, fences or other edges and can therefore be used in water purification installations, water reservoirs, slurry pits, etc. The hose can also be fitted easily with couplings and hose clamps without the need for a NBR cord or other resources, as is the case with various other corrugated hoses.

Remark:

- Cutted length possible (ID 152 4m/5m excluded)

We recommend assembly with:

5721:
Perrot couplings



see catalogue 21-K P.23

5710:
Bauer couplings



see catalogue 21-K P.21

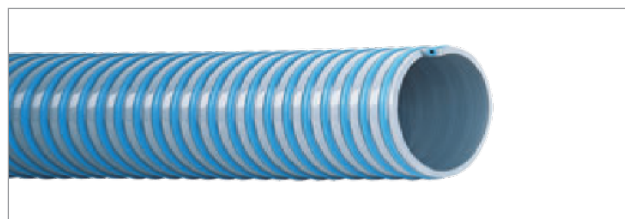
6200:
Super clamps



see catalogue 21-K P.99

Water hoses

SUPERELASTICO



Extremely flexible thermoplastic suction and discharge hose

Marking:  Superelastico - Dimension

Norm:	EN ISO 1307:2008	Color tube:	Grey
Vacuum:	0,90 bar	Compound cover:	PVC
Min. temperature:	-25 °C	Cover:	Corrugated
Max. temperature:	+60 °C	Color cover:	Grey
Compound tube:	PVC	Reinforcements:	Rigid PVC spiral
Construction tube:	Smooth	Color spiral:	Blue

Art.-no.	Ø Inner (mm)	Wall (mm)	Ø Outer (mm)	WP at 20°C (bar)	Bending radius (mm)	Weight (kg/mtr)	Length (mtr)
4450025000	25,0	4,2	33,0	7,0	90	0,400	50
4450032000	32,0	4,7	41,0	6,0	112	0,540	50
4450038000	38,0	4,7	47,0	6,0	133	0,650	50
4450050000	51,0	5,7	62,0	5,0	180	1,050	50
4450063000	63,0	5,7	74,0	4,5	225	1,300	50
4450075000	76,0	6,0	88,0	4,0	266	1,600	50
4450090000	90,0	6,4	103,0	3,5	315	1,850	50
4450100000	102,0	6,7	115,0	3,0	357	2,200	50
4450110000	110,0	7,0	124,0	3,0	385	2,400	20
4450125000	127,0	8,0	143,0	2,5	450	3,100	20
4450150000	152,0	9,0	170,0	2,0	532	4,200	4/5/6/20
4450200000	203,0	12,5	228,0	1,5	715	9,500	4/5/6

Application:

Best seller in agriculture. Hose has a unique construction with a hollow spiral that gives the hose very good mechanical properties and makes it lighter, so that it also contributes to reducing the physical load in an ergonomic sense and is easier to handle during usage. The Superelastico is used for the transit of (industrial) water, dung and irrigation systems under medium working conditions. The use of high-quality PVC keeps the hose more flexible in cold weather conditions.

Remark:

- We recommend using cord for hose assembly
- Regarding the overpressure we would like to refer to the guidelines for the right use of the hoses which are mentioned on our website
- Cutted length possible (ID 152 and 203 in 4/5/6m excluded)

We recommend assembly with:

5721:
Perrot couplings



see catalogue 21-K P.23

5124:
Storz couplings



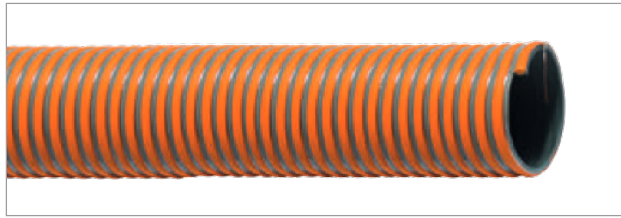
see catalogue 21-K P.13

6202:
Mikalor Supra -
clamps



see catalogue 21-K P.98

CORRUFLEX/AS



Very flexible suction and discharge hose

Marking:  Corruflex / AS - M - ID - Static-Wire

Norm:	EN ISO 1307:2008	Construction tube:	Smooth
Working pressure at 20°C:	2,0 bar	Color tube:	Grey
Vacuum:	0,90 bar	Compound cover:	PVC
Min. temperature:	-15 °C	Cover:	Slightly corrugated
Max. temperature:	+60 °C	Reinforcements:	Rigid PVC spiral, Static wire
Compound tube:	PVC	Color spiral:	Orange

Art.-no.	Ø Inner (mm)	Wall (mm)	Ø Outer (mm)	Bending radius (mm)	Weight (kg/mtr)	Length (mtr)
4456050000	51,0	4,5	60,0	160	0,960	50
4456075000	76,0	5,5	87,0	230	1,600	50
4456100000	102,0	7,0	116,0	310	2,700	50
4456125000	127,0	7,5	142,0	390	3,450	30
4456150000	152,0	8,0	168,0	460	4,700	20

Application:

For the transit of (industrial) water and dung and for irrigation systems under medium working conditions. Signal color ensures good visibility, which benefits the safety of users and their environment. The flexibility and durability in combination with the fairly smooth exterior of the hose ensures that it is frequently used in industrial cleaning where very high demands are required on these type of products.

Remark:

- We recommend using cord for hose assembly
- Regarding the overpressure we would like to refer to the guidelines for the right use of the hoses which are mentioned on our website
- Cutted length possible

We recommend assembly with:

5721:
Perrot couplings



see catalogue 21-K P.23

5710:
Bauer couplings



see catalogue 21-K P.21

6202:
Mikalor Supra -
clamps



see catalogue 21-K P.98

Water hoses

DELTAFLIX®



Rubber suction hose with spiral-free cuffs
extremely flexible due to the corrugated cover.

Norm:	EN ISO 1307:2008	Construction tube:	Smooth
Working pressure:	3 bar	Color tube:	Black
Vacuum:	0,90 bar	Compound cover:	SBR
Min. temperature:	-30 °C	Cover:	Fabric finish, Corrugated
Max. temperature:	+85 °C	Color cover:	Black
Compound tube:	SBR	Reinforcements:	Steel spiral, Textile plies

Art.-no.	Ø Inner (mm)	Wall (mm)	Ø Outer (mm)	Bending radius (mm)	Weight (kg/mtr)	Length (mtr)
3600050200	50,0	5,0	60,0	175	1,420	2
3600050300	50,0	5,0	60,0	175	1,420	3
3600050500	50,0	5,0	60,0	175	1,420	5
3600050600	50,0	5,0	60,0	175	1,420	6
3600075200	76,0	6,0	88,0	266	2,180	2
3600075300	76,0	6,0	88,0	266	2,180	3
3600075400	76,0	6,0	88,0	266	2,180	4
3600075500	76,0	6,0	88,0	266	2,180	5
3600075600	76,0	6,0	88,0	266	2,180	6
3600100200	102,0	7,0	116,0	357	3,390	2
3600100300	102,0	7,0	116,0	357	3,390	3
3600100400	102,0	7,0	116,0	357	3,390	4
3600100500	102,0	7,0	116,0	357	3,390	5
3600100600	102,0	7,0	116,0	357	3,390	6
3600110300	110,0	7,0	124,0	385	3,830	3
3600110490	110,0	7,0	124,0	385	3,830	4,9
3600125300	127,0	8,0	143,0	450	5,130	3
3600125500	127,0	8,0	143,0	450	5,130	5
3600125600	127,0	8,0	143,0	450	5,130	6
3600150300	152,0	9,0	170,0	532	6,830	3
3600150400	152,0	9,0	170,0	532	6,830	4
3600150500	152,0	9,0	170,0	532	6,830	5
3600150600	152,0	9,0	170,0	532	6,830	6
3600200200	203,0	11,0	225,0	720	11,820	2
3600200300	203,0	11,0	225,0	720	11,820	3
3600200400	203,0	11,0	225,0	720	11,820	4
3600200500	203,0	11,0	225,0	720	11,820	5
3600200600	203,0	11,0	225,0	720	11,820	6

Application:

Suitable for (industrial) water and dung, often used in several agricultural applications. Limited lye and acid resistant.

Remark:

- Cutted length not possible

We recommend assembly with:

5721:
Perrot couplings



see catalogue 21-K P.23

5110:
Storz couplings



see catalogue 21-K P.12

6202:
Mikalor Supra -
clamps



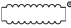
see catalogue 21-K P.98

HEDUFLEX®



Rubber suction and discharge hose

for drainage water, dung and with limited lye and acid resistance.

Marking:  Heduflex® S/D PN 10 bar (203/254/305 MM PN 6 bar)

Norm:	EN ISO 1307:2008
Vacuum:	0,90 bar
Min. temperature:	-30 °C
Max. temperature:	+80 °C
Compound tube:	SBR
Construction tube:	Smooth

Color tube:	Black
Compound cover:	SBR
Cover:	Fabric finish
Color cover:	Black
Reinforcements:	Steel spiral, Textile plies

Art.-no.	Ø Inner (mm)	Wall (mm)	Ø Outer (mm)	WP (bar)	BP (bar)	Bending radius (mm)	Weight (kg/mtr)	Length (mtr)
3640019000	19,0	5,5	30,0	10	30	95	0,680	40
3640025000	25,0	5,0	35,0	10	30	125	0,810	40
3640032000	32,0	5,5	43,0	10	30	160	1,000	40
3640038000	38,0	6,0	50,0	10	30	190	1,300	40
3640040000	40,0	6,0	52,0	10	30	200	1,350	40
3640050000	51,0	6,5	64,0	10	30	210	1,740	40
3640060000	60,0	6,5	73,0	10	30	240	2,260	40
3640063000	63,0	8,0	79,0	10	30	260	2,500	40
3640075000	76,0	7,0	90,0	10	30	310	2,920	20/40
3640080000	80,0	7,5	95,0	10	30	320	3,300	40
3640090000	90,0	7,5	105,0	10	30	360	3,670	40
3640100000	102,0	7,0	116,0	10	30	410	3,960	10/20/40
3640110000	110,0	8,0	126,0	10	30	440	4,900	20
3640125000	127,0	8,5	144,0	10	30	510	6,000	20
3640150000	152,0	9,0	170,0	10	30	760	7,950	20
3640200000	203,0	10,5	224,0	6	18	1015	12,600	5/6
3640250000	254,0	10,5	275,0	6	18	1270	16,500	5/6
3640300000	305,0	10,5	326,0	6	18	1830	21,500	3/5

Application:

High-quality rubber hose. One of the bestselling products for heavy duty industrial applications, agriculture, construction, infrastructure and gardening. Hose is also very widely used on the suction side of pumps, where the thick wall strength, robust construction and wear-resistant cover contribute to a very long life time of this hose. Other dimensions can be produced on request.

Remark:

- ID 203/254/305 with spiral free cuffs
- Cutted length possible (ID 203/254/305 excluded)

We recommend assembly with:

5721:
Perrot couplings



see catalogue 21-K P.23

5710:
Bauer couplings



see catalogue 21-K P.21

6202:
Mikalor Supra -
clamps



see catalogue 21-K P.98

Water hoses

HEDUFLEX®/GRECATO



Rubber suction and discharge hose with corrugated cover

for drainage water, dung and with limited lye and acid resistance

Marking:  Heduflex®/Grecato S/D PN 6 bar

Norm:	EN ISO 1307:2008	Construction tube:	Smooth
Working pressure:	6 bar	Color tube:	Black
Bursting pressure:	18 bar	Compound cover:	SBR
Vacuum:	0,90 bar	Cover:	Fabric finish, Square corrugated
Min. temperature:	-30 °C	Color cover:	Black
Max. temperature:	+85 °C	Reinforcements:	Steel spiral, Textile plies
Compound tube:	SBR		

Art.-no.	Ø Inner (mm)	Wall (mm)	Ø Outer (mm)	Bending radius (mm)	Weight (kg/mtr)	Length (mtr)
3641075000	76,0	7,0	90,0	228	2,420	40
3641100000	102,0	7,5	117,0	306	3,870	40
3641125000	127,0	8,0	143,0	445	4,980	20
3641150000	152,0	8,0	168,0	608	6,020	20
3641200000	203,0	10,5	224,0	812	10,430	4/6

Application:

Very high quality, extra flexible rubber hose. Suitable for (industrial) water and dung. Limited lye and acid resistant. Widely used for industrial, agricultural, machine building, construction, infrastructure and horticultural applications. The hose is very flexible due to the special "Greek" profile and is therefore often used in places where a very small bending radius is required.

Remark:

- ID 203 with spiral free cuffs
- Cutted length possible (ID 203 excluded)

We recommend assembly with:

5721:
Perrot couplings



see catalogue 21-K P.23

5710:
Bauer couplings



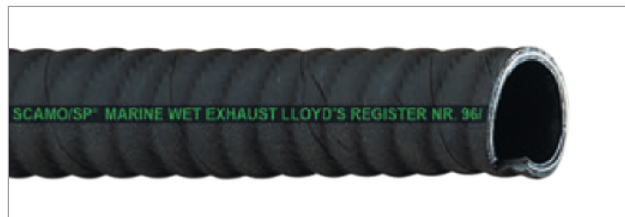
see catalogue 21-K P.21

6202:
Mikalor Supra -
clamps



see catalogue 21-K P.98

TUBIMAR®/LLOYDS



Marine wet exhaust hose

Marking: Scamo/SP® Marine wet exhaust LLOYD'S Register nr. 96/00127(E4) RINA nr. DIP061008CS - 20/03/08 SAE J 2006:03 R2 - ISO 13363:04 Type 2 CLASS B - (Ø quarter/year)

Norm:	EN ISO 1307:2008, ISO 13363:04 type 2 class B, Lloyd's register nr. 96/00127 (E4), RINA nr. DIP061008CS 20/03/08, SAE J 2006:03	Max. temperature:	+100 °C
Working pressure:	3 bar	Construction tube:	Smooth, exhaust and sea water resistant rubber
Vacuum:	0,80 bar	Color tube:	Black
Min. temperature:	-30 °C	Cover:	Fabric finish, Corrugated
		Color cover:	Black
		Reinforcements:	Steel spiral, Textile plies

Art.-no.	Ø Inner (mm)	Ø Outer (mm)	Bending radius (mm)	Weight (kg/mtr)	Length (mtr)
3737040000	40,0	50,0	80	0,900	20
3737045000	45,0	57,0	90	1,000	20
3737050000	51,0	63,0	100	1,100	20
3737060000	60,0	71,0	120	1,500	20
3737075000	76,0	90,5	150	2,100	20
3737090000	90,0	104,0	180	2,650	20
3737100000	102,0	119,0	200	3,050	20
3737125000	127,0	143,0	250	3,600	20

Application:

Very flexible wet exhaust hose. Also suitable for the cooling of heat exchangers on motor yachts up to 24 meters.

Remark:

- Cutted length possible

Marine hoses

INDUCORD®/TC



Tank cleaning hose

Norm:	EN ISO 1307:2008
Working pressure:	20 bar
Bursting pressure:	60 bar
Min. temperature:	-30 °C
Max. temperature:	+100 °C
Compound tube:	EPDM

Construction tube:	Smooth
Color tube:	Black
Compound cover:	EPDM
Cover:	Fabric finish
Color cover:	Black
Reinforcements:	2 Stainless steel static wires, Textile plies

Art.-no.	Ø Inner (mm)	Wall (mm)	Ø Outer (mm)	Bending radius (mm)	Weight (kg/mtr)	Length (mtr)
3045038000	38,0	8,0	54,0	304	1,450	60
3045050000	51,0	8,0	67,0	408	1,880	60

Application:

Very high quality, specially developed hose for tank cleaning with rotating spray head. Thanks to the special construction, the hose expands minimally during use. Hose is fitted with a marking ring every 5 meters, so you can work safely and always see how far the hose is in the silo or tank. Due to its EPDM inner and outer wall, the hose is resistant to various chemicals and alkalis, so that the hose is not affected by the medium if it comes into contact with medium during cleaning work. The hose can also be used for hot water.

Remark:

- Cutted length possible

We recommend assembly with:

5600:
Kamlok couplings

see catalogue 21-K P.44



5561:
Safety clamps

see catalogue 21-K P.107



INDUCORD®/LANCIA



Industrial water hose with conical end

Norm:	EN ISO 1307:2008
Working pressure:	10 bar
Bursting pressure:	30 bar
Min. temperature:	-20 °C
Max. temperature:	+80 °C
Compound tube:	SBR

Construction tube:	Smooth
Color tube:	Black
Compound cover:	SBR
Cover:	Fabric finish
Color cover:	Black
Reinforcements:	Textile plies

Art.-no.	Ø Inner (mm)	Wall (mm)	Ø Outer (mm)	Weight (kg/mtr)	Length (mtr)
3043025000	25,0	5,0	35,0	0,640	15
3043032000	32,0	6,0	44,0	0,950	15
3043038000	38,0	6,0	50,0	1,110	25

Application:

The hose is used for cleaning floors and ship decks. The conical end, which can be squeezed easily, ensures a good pressure build up. Hose does not need to be additionally equipped with a nozzle and is therefore very easy to handle.

Remark:

- Cutted length not possible

We recommend assembly with:

5110:
Storz couplings



see catalogue 21-K P.12

6170:
"Pa-Ri" clamps



see catalogue 21-K P.103

Hot water hoses

RADIACORD®



Cooling water hose

Marking:  Radiacord® PN .. bar max. 100°C

Norm:	EN ISO 1307:2008	Color tube:	Black
Min. temperature:	-30 °C	Compound cover:	EPDM
Max. temperature:	+100 °C	Color cover:	Black
Compound tube:	EPDM	Reinforcements:	Textile plies
Construction tube:	Extruded		

Art.-no.	Ø Inner (mm)	Wall (mm)	Ø Outer (mm)	WP (bar)	Cover	Weight (kg/mtr)	Length (mtr)
3100010000	10,0	3,5	17,0	6	Smooth	0,210	40
3100013000	13,0	3,5	20,0	6	Smooth	0,250	40
3100015000	15,0	3,5	22,0	6	Smooth	0,280	40
3100018000	18,0	3,5	25,0	6	Smooth	0,330	40
3100020000	20,0	3,5	27,0	6	Smooth	0,360	40
3100022000	22,0	3,5	29,0	6	Smooth	0,400	40
3100025000	25,0	3,5	32,0	6	Smooth	0,440	40
3100028000	28,0	3,5	35,0	4	Fabric finish	0,480	40
3100030000	30,0	4,0	38,0	4	Fabric finish	0,520	40
3100032000	32,0	3,5	39,0	4	Fabric finish	0,550	40
3100035000	35,0	3,5	42,0	4	Fabric finish	0,600	40
3100038000	38,0	3,5	45,0	4	Fabric finish	0,640	40
3100040000	40,0	3,5	47,0	4	Fabric finish	0,670	40
3100042000	42,0	3,5	49,0	4	Fabric finish	0,700	40
3100045000	45,0	4,0	53,0	4	Fabric finish	0,850	40
3100048000	48,0	4,0	56,0	4	Fabric finish	0,910	40
3100050000	50,0	4,5	59,0	4	Fabric finish	0,970	40
3100060000	60,0	5,0	70,0	4	Fabric finish	1,320	40
3100063000	63,0	5,0	73,0	4	Fabric finish	1,410	40
3100075000	76,0	4,0	84,0	4	Fabric finish	1,340	40
3100090000	90,0	4,0	98,0	4	Fabric finish	1,500	20
3100100000	102,0	4,0	110,0	4	Fabric finish	1,700	40
3100110000	110,0	6,0	122,0	4	Fabric finish	2,700	20

Application:

Suitable as a radiator hose and resistant to the usual antifreeze agents. The hose can also be used for hot water and cooling water applications.

Remark:

- Cutted length possible

We recommend assembly with:

5327:
Hose coupling



see catalogue 21-K P.9

5340:
Hose tail



see catalogue 21-K P.10

6060:
ABA clamps



see catalogue 21-K P.95

RADIACORD®/DIN



Standardized radiator and hot water hose

suitable for the most common cooling liquids. Also suitable for hot water and cooling water applications.

Marking:  Radiacord® DIN 73411:1979 DN x wall thickness V - year / quarter

Norm:	DIN 73411 from July 1979, EN ISO 1307:2008
Working pressure:	4 bar
Bursting pressure:	12 bar
Min. temperature:	-30 °C
Max. temperature:	+130 °C
Compound tube:	EPDM

Construction tube:	Smooth
Color tube:	Black
Compound cover:	EPDM
Cover:	Fabric finish
Color cover:	Black
Reinforcements:	Textile plies

Art.-no.	Ø Inner (mm)	Wall (mm)	Ø Outer (mm)	Weight (kg/mtr)	Length (mtr)
3116010000	10,0	3,0	16,0	0,160	1
3116013000	13,0	3,5	20,0	0,230	1
3116015000	15,0	3,5	22,0	0,260	1
3116018000	18,0	3,5	25,0	0,300	1
3116020000	20,0	3,5	27,0	0,330	1
3116022000	22,0	3,5	29,0	0,360	1
3116025000	25,0	3,5	32,0	0,400	1
3116028000	28,0	4,0	36,0	0,500	1
3116030000	30,0	4,0	38,0	0,540	1
3116032000	32,0	4,0	40,0	0,580	1
3116035000	35,0	4,0	43,0	0,620	1
3116038000	38,0	5,0	48,0	0,800	1
3116040000	40,0	5,0	50,0	0,900	1
3116042000	42,0	5,0	52,0	0,940	1
3116045000	45,0	5,0	55,0	1,000	1
3116048000	48,0	5,0	58,0	1,060	1
3116050000	50,0	5,0	60,0	1,100	1
3116055000	55,0	5,0	65,0	1,200	1
3116060000	60,0	5,0	70,0	1,300	1
3116065000	65,0	5,0	75,0	1,400	1
3116070000	70,0	5,0	80,0	1,500	1
3116075000	75,0	5,0	85,0	1,600	1
3116080000	80,0	5,0	90,0	1,700	1
3116090000	90,0	6,0	102,0	2,300	1
3116100000	100,0	6,0	112,0	2,500	1
3116110000	110,0	6,0	122,0	2,800	1
3116120000	120,0	7,0	134,0	3,500	1

Remark:

- Cutted length not possible

We recommend assembly with:

5327:
Hose coupling



see catalogue 21-K P.9

5340:
Hose tail



see catalogue 21-K P.10

6060:
ABA clamps



see catalogue 21-K P.95

Hot water hoses

RADIACORD®/DIN



Standardized radiator and hot water hose suitable for the most common cooling liquids. Also suitable for hot water and cooling water applications.

Marking:  Radiacord® DIN 73411:1979 DN x wall thickness V - year / quarter

Norm:	DIN 73411 from July 1979, EN ISO 1307:2008	Construction tube:	Smooth
Working pressure:	4 bar	Color tube:	Black
Bursting pressure:	12 bar	Compound cover:	EPDM
Min. temperature:	-30 °C	Cover:	Fabric finish
Max. temperature:	+130 °C	Color cover:	Black
Compound tube:	EPDM	Reinforcements:	Textile plies

Art.-no.	Ø Inner (mm)	Wall (mm)	Ø Outer (mm)	Weight (kg/mtr)	Length (mtr)
3117010000	10,0	3,0	16,0	0,160	40
3117013000	13,0	3,5	20,0	0,230	40
3117015000	15,0	3,5	22,0	0,260	40
3117018000	18,0	3,5	25,0	0,300	40
3117020000	20,0	3,5	27,0	0,330	40
3117022000	22,0	3,5	29,0	0,360	40
3117025000	25,0	3,5	32,0	0,400	40
3117028000	28,0	4,0	36,0	0,500	40
3117030000	30,0	4,0	38,0	0,540	40
3117032000	32,0	4,0	40,0	0,580	40
3117035000	35,0	4,0	43,0	0,620	40
3117038000	38,0	5,0	48,0	0,800	40
3117040000	40,0	5,0	50,0	0,900	40
3117042000	42,0	5,0	52,0	0,940	40
3117045000	45,0	5,0	55,0	1,000	40
3117048000	48,0	5,0	58,0	1,060	40
3117050000	50,0	5,0	60,0	1,100	40
3117055000	55,0	5,0	65,0	1,200	40
3117060000	60,0	5,0	70,0	1,300	40
3117065000	65,0	5,0	75,0	1,400	40
3117070000	70,0	5,0	80,0	1,500	40
3117075000	75,0	5,0	85,0	1,600	40
3117080000	80,0	5,0	90,0	1,700	40
3117090000	90,0	6,0	102,0	2,300	40
3117100000	100,0	6,0	112,0	2,500	20
3117110000	110,0	6,0	122,0	2,800	20
3117120000	120,0	7,0	134,0	3,500	20

Remark:

- Cutted length possible

We recommend assembly with:

5327:
Hose coupling



see catalogue 21-K P.9

5340:
Hose tail



see catalogue 21-K P.10

6060:
ABA clamps

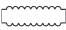


see catalogue 21-K P.95

VAPORCORD®



Low pressure steam hose

Marking:  Vaporcord® Steamhose / Dampfschlauch PN 7 bar - max. 164°C - Hot Water/Heisswasser PN 20 bar max. +95°C

Norm:	EN ISO 1307:2008
Max. working pressure hot water:	20 bar
Max. operating pressure steam :	7 bar
Bursting pressure:	70 bar
Min. temperature:	-35 °C
Max. temperature hot water:	+95 °C
Max. temperature steam :	+164 °C

Electr. resistance tube:	Electrical conductive <math><10^6 \Omega</math>
Electr. resistance cover:	Electrical conductive <math><10^6 \Omega</math>
Compound tube:	EPDM
Construction tube:	Smooth
Color tube:	Black
Compound cover:	EPDM
Cover:	Fabric finish, Pin-pricked
Color cover:	Black
Reinforcements:	Textile plies

Art.-no.	Ø Inner (mm)	Wall (mm)	Ø Outer (mm)	Bending radius (mm)	Weight (kg/mtr)	Length (mtr)
3400010000	10,0	5,5	21,0	70	0,360	40
3400013000	13,0	5,5	24,0	80	0,430	40
3400019000	19,0	7,0	33,0	115	0,730	40
3400025000	25,0	7,0	39,0	150	0,900	40
3400032000	32,0	7,5	47,0	195	1,180	40
3400038000	38,0	9,0	56,0	250	1,700	40
3400050000	51,0	9,0	69,0	300	2,100	40
3400063000	63,5	10,0	83,5	450	2,800	40
3400075000	76,0	11,0	98,0	550	3,700	40

Application:

Flexibel low pressure steam hose for hot water and saturated steam applications. After use, drain water or steam and let the hose dry in a proper way. This significantly reduces the risk of popcorning of the inner wall.

Remark:

- Drain the hose after usage
- Cutted length possible

We recommend assembly with:

5410:
Boss steam
couplings



see catalogue 21-K P.58

5420:
Boss steam
couplings



see catalogue 21-K P.59

5430:
Steam couplings



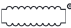
see catalogue 21-K P.57

Steam hoses

METALVAPOR®/EN/ISO



Standardized high pressure steam hose

Marking:  Metalvapor® - EN/ISO 6134:2017 - 2A - Steam - Diameter - WP 18 bar - BP 180 bar - 210° C - Ω - quarter / year

Norm:	EN/ISO 6134:2017 type 2/A
Max. working pressure hot water:	55 bar
Max. operating pressure steam :	18 bar
Bursting pressure:	180 bar
Min. temperature:	-35 °C
Max. temperature hot water:	+120 °C
Max. temperature steam :	+210 °C

Electr. resistance tube:	Electrical conductive <math><10^6 \Omega</math>
Electr. resistance cover:	Electrical conductive <math><10^6 \Omega</math>
Compound tube:	EPDM
Construction tube:	Smooth
Color tube:	Black
Compound cover:	EPDM
Cover:	Fabric finish, Pin-pricked
Color cover:	Black
Reinforcements:	2 steel braids

Art.-no.	Ø Inner (mm)	Wall (mm)	Ø Outer (mm)	Bending radius (mm)	Weight (kg/mtr)	Length (mtr)
3411013000	13,0	6,0	25,0	80	0,550	40
3411019000	19,0	7,0	33,0	110	0,800	15/20/40
3411025000	25,0	7,5	40,0	180	1,150	20/40
3411032000	32,0	8,0	48,0	250	1,450	40
3411038000	38,0	8,0	54,0	300	1,700	40
3411050000	51,0	9,0	69,0	420	2,350	40

Application:

Flexibel high pressure steam hose for hot water and saturated steam applications. The high quality rubber compound ensures limited bulging of the inner wall when used with hot water and reduces the risk of popcorning. The hose is provided with cross braided steel insertions, making it extremely safe to use and limiting the risk of bursting, unlike various other products that are available on the market with woven insertions. After use, drain water or steam and let the hose dry in a proper way. This significantly reduces the risk of popcorning of the inner wall.

Remark:

- Drain the hose after usage
- Cutted length possible

We recommend assembly with:

5410:
Boss steam
couplings



see catalogue 21-K P.58

5420:
Boss steam
couplings



see catalogue 21-K P.59

5430:
Steam couplings



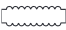
see catalogue 21-K P.57

Beverage and food hoses

VAPORCORD®/ALIM/EXTRA



Food resistant discharge and cleaning hose

Marking:  Vaporcord®/Alim/Extra - Steamhose / Dampfschlauch Hot Water PN .. bar max. 100°C / Steam PN 6 bar max. 164°C - EG1935/2004 - BFR XXI Kat. 2 - FDA CFR 21 § 177.2600

Norm:	BfR XXI:2002 (cat. 2), EN ISO 1307:2008, EU 1935/2004, FDA (CFR 21 § 177.2600)	Compound tube:	NBR
Max. operating pressure steam :	6 bar	Construction tube:	Smooth
Bursting pressure steam:	60 bar	Color tube:	White
Min. temperature:	-35 °C	Compound cover:	Modified elastomer
Max. temperature hot water:	+100 °C	Color cover:	Blue
Max. temperature steam :	+164 °C	Resistance tube:	Up to max. 15% alcohol
		Resistance cover:	Animal fat, Poultry fat, Vegetable fats
		Reinforcements:	Textile plies

Art.-no.	Ø Inner (mm)	Wall (mm)	Ø Outer (mm)	Max. WP hot water (bar)	BP (bar)	Bending radius (mm)	Cover	Weight (kg/mtr)	Length (mtr)
3406010000	10,0	4,5	19,0	30	90	55	Smooth	0,290	40
3406013000	13,0	5,0	23,0	30	90	65	Smooth	0,430	40
3406019000	19,0	6,0	31,0	30	90	100	Smooth	0,600	40
3406025000	25,0	6,0	37,0	30	90	125	Smooth	0,800	40
3406032000	32,0	7,0	46,0	20	60	195	Fabric finish	1,100	40
3406038000	38,0	8,0	54,0	20	60	250	Fabric finish	1,600	40
3406050000	50,0	8,0	66,0	20	60	350	Fabric finish	1,800	40

Application:

Suitable for transport of liquid foodstuffs such as milk and milk products, various juices, vegetable and animal fats and oils. The hose can also be used as a low pressure steam hose for cleaning purposes in kitchens, slaughterhouses, food processing factories etc. Very flexible and therefore extremely suitable for reel applications. The outer wall is resistant to animal, vegetable and poultry fats. After use, drain water or steam and let the hose dry in a proper way. This significantly reduces the risk of popcorning of the inner wall.

Remark:

- Drain the hose after usage
- Please pay attention to the cleaning instructions which you can find in the footer of our homepage
- Cutted length possible

We recommend assembly with:

5430:
Steam couplings



see catalogue 21-K P.57

5410:
Boss steam couplings



see catalogue 21-K P.58

5420:
Boss steam couplings



see catalogue 21-K P.59

Beverage and food hoses

MILKCORD®/ SP



Alimentary suction and discharge hose

Marking:  Milkcord®/SP Milkhose / Milchschauch S/D
- PN 10 bar - EG 1935/2004 - BfR XXI Kat. 2 - FDA - CFR
21§177.26.00

Norm:	BfR XXI:2002 (cat. 2), EN ISO 1307:2008, EU 1935/2004, FDA (CFR 21 § 177.2600)
Working pressure:	10 bar
Bursting pressure:	30 bar
Vacuum:	0,80 bar
Min. temperature:	-20 °C
Max. temperature:	+90 °C
Max. temperature steam cleaning:	+130 °C

Max. cleaning time with steam:	30 minutes without pressure
Compound tube:	NBR
Construction tube:	Smooth seamless, taste and odourless
Color tube:	White
Compound cover:	Modified elastomer
Cover:	Fabric finish
Color cover:	Blue
Resistance tube:	Up to max. 15% alcohol
Reinforcements:	2 steel wire helix, Textile plies

Art.-no.	Ø Inner (mm)	Wall (mm)	Ø Outer (mm)	Bending radius (mm)	Weight (kg/mtr)	Length (mtr)
3455032000	32,0	6,0	44,0	200	1,100	40
3455038000	38,0	7,0	52,0	230	1,400	40
3455050000	51,0	7,0	65,0	300	1,820	40
3455063000	63,0	8,0	79,0	380	2,540	40
3455075000	76,0	8,0	92,0	450	3,050	40
3455100000	102,0	10,0	122,0	600	5,000	20

Application:

The hose is suitable for transport of milk and milk products, vegetable fats and oils, fruit juices, oil and fatty foods and alcoholic liquids with a low alcohol percentage up to 15%. Due to its flexible construction the hose is often used as a mobile milk reception hose. The hose is also used for loading and unloading tanks.

Remark:

- Please pay attention to the cleaning instructions which you can find in the footer of our homepage
- Cutted length possible

We recommend assembly with:

5547:
Food couplings



see catalogue 21-K P.83

5548:
Food couplings



see catalogue 21-K P.83

5561:
Safety clamps



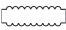
see catalogue 21-K P.107

Beverage and food hoses

MILKCORD®/SP/BUTYL



Corrugated alimentary suction and discharge hose

Marking:  Milkcord®/SP/Butyl Milkhose/Milchschlauch S/D - PN 10 bar - EG 1935/2004 - BfR XXI Kat. 2 - FDA - CFR 21§177.26.00 - Phthalates free - BPA free - PAH free - 96% Alcohol

Norm:	BfR XXI:2002 (cat. 2), EN ISO 1307:2008, EU 1935/2004, FDA (CFR 21 § 177.2600)
Working pressure:	10 bar
Bursting pressure:	30 bar
Vacuum:	0,90 bar
Min. temperature:	-30 °C
Max. temperature:	+120 °C
Max. temperature steam cleaning:	+130 °C
Max. cleaning time with steam:	30 minutes without pressure
Compound tube:	Butyl

Construction tube:	Smooth seamless, taste and odourless, Phthalates free, Bisphenol A (BPA) free
Color tube:	White
Compound cover:	Modified elastomer
Cover:	Fabric finish, Flat corrugated
Color cover:	Blue
Resistance tube:	Up to max. 96% alcohol
Resistance cover:	Abrasion resistant, Microbes resistant, UV resistant, Weather resistant
Reinforcements:	2 steel wire helix, Textile plies

Art.-no.	Ø Inner (mm)	Wall (mm)	Ø Outer (mm)	Bending radius (mm)	Weight (kg/mtr)	Length (mtr)
3457032000	32,0	6,0	44,0	70	0,950	40
3457038000	38,0	6,0	50,0	80	1,100	40
3457050000	51,0	6,5	64,0	100	1,450	40
3457063000	63,0	7,0	77,0	130	1,900	40
3457075000	76,0	7,5	91,0	160	2,450	40
3457100000	102,0	8,0	118,0	310	3,700	20

Application:

The hose is suitable for transport of milk and milky products, vegetable fats and oils, fruit juices, oil and fatty foodstuff and alcoholic liquids with an alcohol percentage of 96%. The butyl tube is very suitable for higher temperatures and higher concentrations of acids and alkalis and therefore extremely suitable for CIP cleaning. The special designed microbes resistant cover protects against the formation of mold and bacteria. The hose is very flexible due to the corrugated cover in combination with the twin-spiral construction and therefore suitable for loading and unloading of tanks. The Milkcord®/SP/Butyl can also be handled easily due to the light weight construction.

Remark:

- Please pay attention to the cleaning instructions which you can find in the footer of our homepage
- Cutted length possible

We recommend assembly with:

5547:
Food couplings



see catalogue 21-K P.83

5548:
Food couplings



see catalogue 21-K P.83

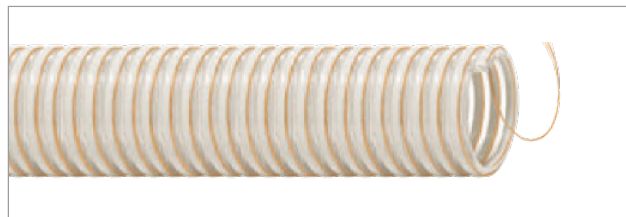
5561:
Safety clamps



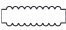
see catalogue 21-K P.107

Beverage and food hoses

SCIROPPO®/AS



Alimentary suction and discharge hose

Marking:  Sciroppo®/AS - M - Diameter - Reg. EU 10/2011

Norm:	EN ISO 1307:2008, EU 10/2011 Cat. A, EU 10/2011 Cat. B, EU 10/2011 Cat. C, EU 1935/2004, LFGB
Vacuum:	0,70 bar
Min. temperature:	-15 °C
Max. temperature:	+60 °C
Compound tube:	PVC

Construction tube:	Smooth
Color tube:	Transparent
Compound cover:	PVC
Cover:	Slightly corrugated
Color cover:	Transparent
Reinforcements:	Rigid PVC spiral, Static wire
Color spiral:	Ivory

Art.-no.	Ø Inner (mm)	Ø Outer (mm)	WP at 20°C (bar)	Bending radius (mm)	Weight (kg/mtr)	Length (mtr)
4411032000	32,0	38,0	7,0	128	0,410	50
4411040000	40,0	47,0	6,0	160	0,560	50
4411050000	51,0	59,0	5,0	204	0,820	50

Application:

Suitable for transport of non fatty liquid food products and granular media, such as granulate grains and wood pellets.

Remark:

- We recommend using cord for hose assembly
- Regarding the overpressure we would like to refer to the guidelines for the right use of the hoses which are mentioned on our website
- Cutted length possible

We recommend assembly with:

5510:
Kamllok couplings



see catalogue 21-K P.27

5511:
Kamllok couplings



see catalogue 21-K P.30

6202:
Mikalor Supra -
clamps

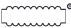


see catalogue 21-K P.98

POLYFLEX



Food resistant air pressure hose

Marking:  Polyflex Reg. EU 10/2011 - dimension - PN .. bar

Norm:	EN ISO 1307:2008, EU 10/2011 Cat. A, EU 10/2011 Cat. B, EU 10/2011 Cat. C, EU 1935/2004, LFGB	Construction tube:	Smooth
Min. temperature:	-20 °C	Color tube:	Transparent
Max. temperature:	+60 °C	Compound cover:	PVC
Compound tube:	PVC	Cover:	Smooth
		Color cover:	Transparent
		Reinforcements:	Polyester plies

Art.-no.	Ø Inner (mm)	Wall (mm)	Ø Outer (mm)	WP at 20°C (bar)	Weight (kg/mtr)	Length (mtr)
4200005011	5,0	3,0	11,0	20,0	0,100	50
4200006012	6,0	3,0	12,0	20,0	0,110	50
4200008014	8,0	3,0	14,0	20,0	0,135	50
4200009015	9,0	3,0	15,0	20,0	0,145	50
4200010016	10,0	3,0	16,0	20,0	0,155	50
4200012021	12,0	4,5	21,0	15,0	0,295	50
4200013019	13,0	3,0	19,0	15,0	0,190	50
4200013020	13,0	3,5	20,0	15,0	0,230	50
4200015021	15,0	3,0	21,0	15,0	0,215	50
4200016024	16,0	4,0	24,0	10,0	0,275	50
4200019027	19,0	4,0	27,0	10,0	0,370	50
4200025034	25,0	4,5	34,0	10,0	0,470	50
4200030038	30,0	4,0	38,0	10,0	0,550	50
4200032042	32,0	5,0	42,0	10,0	0,740	50
4200038048	38,0	5,0	48,0	10,0	0,860	50
4200050060	51,0	6,5	64,0	7,0	1,390	25

Application:

Flexible and very durable PVC hose with an optimal adhesion due to the unique production process which reduces possible leakage to a minimum. Because the inserts are optimally positioned in the hose, the hose does not twist. The hose has limited chemical resistance and is made of non-toxic PVC quality. Suitable for various compressed air machines, tools and for transport of various liquids or liquid foodstuffs.

Remark:

- Cutted length not possible

We recommend assembly with:

5200:
Air couplings



see catalogue 21-K P.63

5201:
Air couplings



see catalogue 21-K P.64

6030:
Pincher clamps



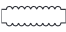
see catalogue 21-K P.97

Air hoses

SUPER AIR



Thermoplastic air pressure hose

Marking:  Super Air PN 20 bar

Norm:	EN ISO 1307:2008
Working pressure at 20°C:	20,0 bar
Bursting pressure:	60 bar
Min. temperature:	-20 °C
Max. temperature:	+60 °C
Compound tube:	PVC
Construction tube:	Smooth

Color tube:	Black
Compound cover:	PVC
Cover:	Smooth
Color cover:	Beige
Resistance cover:	Ageing resistant, Ozone resistant, UV resistant, Weather resistant
Reinforcements:	Polyester plies

Art.-no.	Ø Inner (mm)	Wall (mm)	Ø Outer (mm)	Bending radius (mm)	Weight (kg/mtr)	Length (mtr)
4210006000	6,0	2,5	11,0	50	0,090	50
4210008000	8,0	2,5	13,0	60	0,115	50
4210010000	10,0	2,75	15,5	75	0,150	50
4210013000	13,0	3,0	19,0	100	0,200	50
4210016000	16,0	3,5	23,0	120	0,295	50
4210019000	19,0	3,75	26,5	140	0,365	50
4210025000	25,0	4,25	33,5	180	0,530	50

Application:

Flexible lightweight PVC hose, weather and aging resistant. Suitable for various water and compressed air applications in industry, construction and agriculture. Can also be used for the transport of pesticides in agricultural applications.

Remark:

- Cutted length not possible

We recommend assembly with:

5200:
Air couplings



see catalogue 21-K P.63

5201:
Air couplings



see catalogue 21-K P.64

6030:
Pincher clamps



see catalogue 21-K P.97

ARIAFORM®/TPU



Polyurethane air pressure hose

Marking:  Ariaform® / TPU - dimension mm - PN 20 bar

Norm:	EN ISO 1307:2008	Construction tube:	Smooth
Working pressure at 20°C:	20,0 bar	Color tube:	Black
Bursting pressure:	60 bar	Compound cover:	PU/PVC
Min. temperature:	-20 °C	Cover:	Smooth
Max. temperature:	+60 °C	Color cover:	Blue
Compound tube:	PU	Reinforcements:	Polyester plies

Art.-no.	Ø Inner (mm)	Wall (mm)	Ø Outer (mm)	Bending radius (mm)	Weight (kg/mtr)	Length (mtr)
4220006000	6,0	2,0	10,0	40	0,070	50
4220008000	8,0	2,0	12,0	50	0,085	50
4220009000	9,0	2,0	13,0	60	0,095	50
4220010000	10,0	2,25	14,5	60	0,120	50
4220013000	13,0	2,5	18,0	80	0,165	50

Application:

Hose is dimensionally stable, lightweight, very wear resistant, flexible and has great resilience so that it always returns to its original shape. The Ariaform/TPU is ideal for applications with pneumatic tools and as a reel hose. Excellent resistant to oil, petrol, greases, light acids and alkalis.

Remark:

- Cutted length not possible

We recommend assembly with:

5200:
Air couplings



see catalogue 21-K P.63

5201:
Air couplings



see catalogue 21-K P.64

6030:
Pincher clamps



see catalogue 21-K P.97

Air hoses

NIPLAFLEX®



Multi purpose hose

Marking:  NIPLAFLEX® PN 25 bar

Norm:	EN ISO 1307:2008
Working pressure at 20°C:	25,0 bar
Bursting pressure:	75 bar
Min. temperature:	-20 °C
Max. temperature:	+70 °C
Compound tube:	NBR/PU/PVC
Construction tube:	Smooth

Color tube:	Black
Compound cover:	NBR/PVC
Cover:	Smooth
Color cover:	Black
Resistance cover:	Ageing resistant, Ozone resistant, UV resistant, Weather resistant
Reinforcements:	Polyester plies

Art.-no.	Ø Inner (mm)	Wall (mm)	Ø Outer (mm)	Bending radius (mm)	Weight (kg/mtr)	Length (mtr)
3240006000	6,0	3,0	12,0	40	0,115	100
3240008000	8,0	3,5	15,0	50	0,170	100
3240009000	9,0	3,5	16,0	55	0,185	100
3240010000	10,0	3,5	17,0	60	0,200	100
3240013000	13,0	4,0	21,0	80	0,290	100
3240019000	19,0	4,5	28,0	110	0,450	50
3240025000	25,0	5,5	36,0	160	0,715	50

Application:

Very flexible, oil and petrol resistant multipurpose hose. Also suitable for the transport of water, air, light acids and alkalis, pesticides and fertilizers. Hose is used in construction, building, agriculture, industry, workshops, etc.

Remark:

- Cutted length possible

We recommend assembly with:

5200:
Air couplings



see catalogue 21-K P.63

5201:
Air couplings



see catalogue 21-K P.64

6030:
Pincher clamps



see catalogue 21-K P.97

SOLVOFORM



Compressor air hose

Marking:  Solvoform - dimension

Norm:	EN ISO 1307:2008
Working pressure at 20°C:	20,0 bar
Bursting pressure:	60 bar
Min. temperature:	-20 °C
Max. temperature:	+60 °C
Electr. resistance tube:	Electrical conductive <math><10^6 \Omega</math>
Compound tube:	TPE/TPU

Construction tube:	Smooth
Color tube:	Black
Compound cover:	Thermoplastic elastomer
Cover:	Smooth
Color cover:	Grey
Reinforcements:	Polyester plies

Art.-no.	Ø Inner (mm)	Wall (mm)	Ø Outer (mm)	Bending radius (mm)	Weight (kg/mtr)	Length (mtr)
3210006000	6,0	4,0	14,0	50	0,170	50
3210008000	8,0	3,5	15,0	65	0,175	50
3210010000	10,0	3,5	17,0	75	0,200	50
3210013000	13,0	4,5	22,0	105	0,335	50
3210019000	19,0	4,5	28,0	150	0,450	50

Application:

Thick walled, robust hose. Suitable for compressed air, water, lubricating oil, greases and oil-based solvents. This makes it ideal for use in workshops and garages.

Remark:

- Cutted length not possible

We recommend assembly with:

5200:
Air couplings



see catalogue 21-K P.63

5201:
Air couplings



see catalogue 21-K P.64

6030:
Pincher clamps



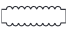
see catalogue 21-K P.97

Air hoses

NITROGEN/YELLOW



Antistatic nitrogen hose

Marking:  Nitrogen - dimension mm - antistatic - WP/
BP 25/75 bar year

Norm:	EN ISO 1307:2008
Working pressure at 20°C:	25,0 bar
Bursting pressure:	75 bar
Min. temperature:	-20 °C
Max. temperature:	+60 °C
Compound tube:	PVC
Construction tube:	Smooth

Color tube:	Black
Compound cover:	PVC
Cover:	Smooth
Color cover:	Yellow
Longitudinal stripes:	2 black electrical conductive longitudinal stripes <math><10^6 \Omega</math>
Reinforcements:	Aramid plies

Art.-no.	Ø Inner (mm)	Wall (mm)	Ø Outer (mm)	Bending radius (mm)	Weight (kg/mtr)	Length (mtr)
3031019000	19,5	5,25	30,0	100	0,550	20/40

Application:

Antistatic nitrogen hose for transport air, water, nitrogen and other non-aggressive gases. Suitable for applications in the petrochemical industry, at refineries and various other production facilities where nitrogen is used in the process.

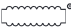
Remark:

- Cutted length not possible

ARIAFORM®/15



Air pressure/water hose

Marking:  Ariaform® PN 15 bar PB 45 bar

Norm:	EN ISO 1307:2008
Working pressure at 20°C:	15,0 bar
Bursting pressure:	45 bar
Min. temperature:	-30 °C
Max. temperature:	+60 °C
Compound tube:	Thermoplastic elastomer
Construction tube:	Extruded

Color tube:	Black
Compound cover:	Thermoplastic elastomer
Cover:	Smooth
Color cover:	Black
Resistance cover:	Ageing resistant, Ozone resistant, UV resistant, Weather resistant
Reinforcements:	Polyester plies

Art.-no.	Ø Inner (mm)	Wall (mm)	Ø Outer (mm)	Bending radius (mm)	Weight (kg/mtr)	Length (mtr)
3200016026	16,0	5,0	26,0	120	0,450	50
3200019027	19,0	4,5	28,0	150	0,450	25/50
3200025036	25,0	5,5	36,0	200	0,795	40

Application:

High quality, thick walled, flexible hose for medium duty applications in industry, maintenance workshops and at construction sites. Suitable for the transport of water and air. Hose is resistant to oil mist.

Remark:

- Cutted length not possible

We recommend assembly with:

5219:
Claw coupling



see catalogue 21-K P.66

6305:
Hose Clamps



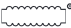
see catalogue 21-K P.105

Air hoses

ARIAFORM® / DIN



Air pressure/water hose

Marking:  Ariaform® PN 10/16 DIN 20018 - year - PB 54 bar

Norm:	DIN 20018, EN ISO 1307:2008
Max. working pressure air:	10 bar
Max. working pressure water:	16 bar
Bursting pressure:	54 bar
Min. temperature:	-30 °C
Max. temperature:	+50 °C
Compound tube:	Thermoplastic elastomer

Construction tube:	Smooth
Color tube:	Black
Compound cover:	Thermoplastic elastomer
Cover:	Smooth
Color cover:	Black
Resistance cover:	Ageing resistant, Ozone resistant, UV resistant, Weather resistant
Reinforcements:	Polyester plies

Art.-no.	Ø Inner (mm)	Wall (mm)	Ø Outer (mm)	Bending radius (mm)	Weight (kg/mtr)	Length (mtr)
3201006000	6,0	3,5	13,0	50	0,140	40/100
3201008000	8,0	3,5	15,0	65	0,175	40/100
3201009000	9,0	3,5	16,0	70	0,190	40
3201010000	10,0	4,5	19,0	70	0,280	40/100
3201013000	13,0	5,0	23,0	80	0,425	40/50
3201015000	15,0	6,0	27,0	100	0,540	40
3201019031	19,0	6,0	31,0	150	0,610	20/40/50
3201025000	25,0	7,0	39,0	185	0,880	40

Application:

Standardized, high quality, extra robust, thick walled flexible hose for medium duty applications in industry, maintenance workshops and on construction sites. Suitable for transport of water and air. The hose is also resistant to oil mist.

Remark:

- Cutted length not possible

We recommend assembly with:

5219:
Claw coupling



see catalogue 21-K P.66

6305:
Hose Clamps

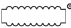


see catalogue 21-K P.105

ARIACORD®/DIN



Air pressure/water hose

Marking:  Ariacord® PN 10/16 DIN 20018 - year - BP 40 bar

Norm:	DIN 20018, EN ISO 1307:2008
Max. working pressure air:	10 bar
Max. working pressure water:	16 bar
Bursting pressure:	40 bar
Min. temperature:	-30 °C
Max. temperature:	+70 °C
Compound tube:	SBR

Construction tube:	Smooth
Color tube:	Black
Compound cover:	SBR
Cover:	Fabric finish
Color cover:	Black
Resistance cover:	Ageing resistant, Weather resistant
Reinforcements:	Textile plies

Art.-no.	Ø Inner (mm)	Wall (mm)	Ø Outer (mm)	Bending radius (mm)	Weight (kg/mtr)	Length (mtr)
3220032000	32,0	8,0	48,0	220	1,330	40
3220035000	35,0	8,0	51,0	220	1,450	40
3220038000	38,0	6,0	50,0	280	1,110	40
3220042000	42,0	9,0	60,0	260	1,930	40
3220050000	51,0	7,0	65,0	400	1,730	40
3220053000	53,0	10,0	73,0	350	2,530	40
3220075000	76,0	10,0	96,0	500	3,490	40

Application:

Standardized, high quality, extra robust, thick walled flexible hose for medium duty applications in industry, maintenance workshops, tunnel construction, infrastructure and on construction sites. Suitable for transport of water and air. The hose is also resistant to oil mist.

Remark:

- Dimensions 38, 51 and 76 are not mentioned in the DIN 20018
- Cutted length possible

We recommend assembly with:

5560:
Safety clamps

see catalogue 21-K P.106



5611:
Swiveling flange

see catalogue 21-K P.55



Air hoses

ARIAFORM®/YELLOW



Air pressure/water hose

Marking:  Ariaform® PN 20 bar - year - PB 60 bar

Norm:	EN ISO 1307:2008
Working pressure at 20°C:	20,0 bar
Bursting pressure:	60 bar
Min. temperature:	-20 °C
Max. temperature:	+60 °C
Compound tube:	Thermoplastic elastomer
Construction tube:	Smooth

Color tube:	Black
Compound cover:	Thermoplastic elastomer
Cover:	Smooth
Color cover:	Yellow
Resistance cover:	UV resistant
Reinforcements:	Textile plies

Art.-no.	Ø Inner (mm)	Wall (mm)	Ø Outer (mm)	Bending radius (mm)	Weight (kg/mtr)	Length (mtr)
3202013023	13,0	5,0	23,0	105	0,385	40
3202019031	19,0	6,0	31,0	150	0,610	20/40
3202025039	25,0	7,0	39,0	200	0,880	40

Application:

High quality, robust, thick walled flexible hose for heavy duty applications in industry, maintenance workshops, tunnel construction, infrastructure and on construction sites. Suitable for transport of water and air. The hose is also resistant to oil mist.

Remark:

- Cutted length not possible

We recommend assembly with:

5219:
Claw coupling



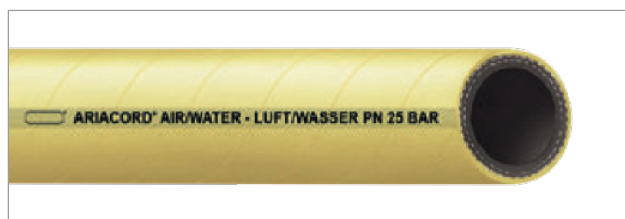
see catalogue 21-K P.66

6305:
Hose Clamps

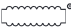


see catalogue 21-K P.105

ARIACORD®/YELLOW



Air pressure/waterhose

Marking:  Ariacord® Air/Water - Luft/Wasser PN 25 bar - BP 80 bar

Norm:	EN ISO 1307:2008
Working pressure:	25 bar
Bursting pressure:	80 bar
Min. temperature:	-30 °C
Max. temperature:	+80 °C
Compound tube:	EPDM
Construction tube:	Smooth

Color tube:	Black
Compound cover:	EPDM
Cover:	Fabric finish
Color cover:	Yellow
Resistance cover:	Ageing resistant, Weather resistant
Reinforcements:	Textile plies

Art.-no.	Ø Inner (mm)	Wall (mm)	Ø Outer (mm)	Bending radius (mm)	Weight (kg/mtr)	Length (mtr)
3225032000	32,0	7,0	46,0	260	1,200	40
3225038000	38,0	7,0	52,0	350	1,400	40
3225050000	51,0	7,5	66,0	400	1,900	20/40
3225063000	63,5	9,5	82,5	480	2,900	40
3225075000	76,0	9,5	95,0	610	3,300	40

Application:

High quality, robust, thick walled flexible rubber hose for heavy duty applications in the industry, maintenance workshops, tunnel construction, infrastructure and on construction sites. Suitable for transport of water and air. The hose is also resistant to oil mist.

Remark:

- Cutted length possible

We recommend assembly with:

5611:
Swiveling flange

see catalogue 21-K P.55



5560:
Safety clamps

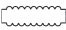
see catalogue 21-K P.106



AIRBRAKE



Rubber airbrake hose

Marking:  Bremsschlauch/Airbrake DIN 74310 ID..
week/year

Norm:	DIN 74310:1993, EN ISO 1307:2008
Working pressure at 20°C:	10,0 bar
Bursting pressure:	25 bar
Min. temperature:	-40 °C
Max. temperature:	+70 °C
Compound tube:	EPDM

Construction tube:	Smooth, Extruded
Color tube:	Black
Compound cover:	EPDM
Cover:	Smooth
Color cover:	Black
Reinforcements:	Textile plies

Art.-no.	Ø Inner (mm)	Wall (mm)	Ø Outer (mm)	Bending radius (mm)	Weight (kg/mtr)	Length (mtr)
3215011018	11,0	3,5	18,0	70	0,230	40
3215013025	13,0	6,0	25,0	80	0,500	40

Application:

Standardized brake hose for air braking systems of vehicles and other compressed air systems in motor vehicles and trailers.

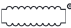
Remark:

- Cutted length not possible

RESPIROFORM



Thermoplastic air breathing hose

Marking:  Respiroform - EN 14594 class B-S-H-F - year

Norm:	EN 14594, EN ISO 1307:2008
Working pressure at 20°C:	30,0 bar
Bursting pressure:	90 bar
Min. temperature:	-20 °C
Max. temperature:	+70 °C
Compound tube:	TPU
Construction tube:	Smooth
Color tube:	Transparent

Compound cover:	Thermoplastic elastomer
Cover:	Smooth
Color cover:	Black
Resistance cover:	Flame resistant, Heat resistant, Oil resistant
Longitudinal stripes:	2 black electrical conductive longitudinal stripes <math><10^6 \Omega</math>
Reinforcements:	Braided textile plies

Art.-no.	Ø Inner (mm)	Wall (mm)	Ø Outer (mm)	Bending radius (mm)	Weight (kg/mtr)	Length (mtr)
4221010000	9,5	3,25	16,0	60	0,180	50

Application:

Standardized hose, suitable for various applications with breathing equipment at among others, firefighting, blasting work and tank cleaning.

Remark:

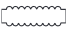
- Cutted length not possible

Air hoses

TWIN HOSE/PVC



Remote control hose

Marking:  PN 20 bar

Norm:	EN ISO 1307:2008	Color tube:	Black
Working pressure at 20°C:	20,0 bar	Compound cover:	PVC
Bursting pressure:	60 bar	Cover:	Smooth
Compound tube:	PVC	Color cover:	Blue/grey
Construction tube:	Smooth	Reinforcements:	Polyester plies

Art.-no.	Ø Inner (mm)	Wall (mm)	Ø Outer (mm)	Weight (kg/mtr)	Length (mtr)
4260006006	6,0	2,5	11,0	0,180	100

Application:

The hose is used as a remote control hose for blasting pots.

Remark:

- Cutted length not possible

SALDAFORM®/RED



Acetylene hose
for welding purposes.

Marking: ISO 3821 - 2MPa (20 bar) - dimension - Saldiform®
- year

Norm:	EN ISO 1307:2008, ISO 3821:2019
Working pressure:	20 bar
Bursting pressure:	60 bar
Min. temperature:	-30 °C
Max. temperature:	+70 °C
Compound tube:	EPDM

Construction tube:	Smooth
Color tube:	Black
Compound cover:	EPDM
Cover:	Ribbed
Color cover:	Red
Reinforcements:	Textile plies

Art.-no.	Ø Inner (mm)	Wall (mm)	Ø Outer (mm)	Bending radius (mm)	Weight (kg/mtr)	Length (mtr)
3255006000	6,3	3,5	13,3	40	0,160	50
3255008000	8,0	3,5	15,0	40	0,200	50
3255009000	9,0	3,5	16,0	45	0,220	50

Application:

Very flexible ribbed hose suitable for transport of acetylene. For welding and cutting, for plasma arc welding (PAW) and other similar processes. Also suitable for hydrogen, syngas (mixture of carbon monoxide and hydrogen gas), carbon dioxide, argon, nitrogen for welding and cutting. Not suitable for LPG, MPS and CNG.

Remark:

- Cutted length not possible

Gas hoses

SALDAFORM®/BLUE



Oxygen hose
for welding purposes.

Marking: ISO 3821 - 2MPa (20 bar) - dimension - Saldiform®
- year

Norm:	EN ISO 1307:2008, ISO 3821:2019
Working pressure:	20 bar
Bursting pressure:	60 bar
Min. temperature:	-30 °C
Max. temperature:	+70 °C
Compound tube:	EPDM

Construction tube:	Smooth
Color tube:	Black
Compound cover:	EPDM
Cover:	Ribbed
Color cover:	Blue
Reinforcements:	Textile plies

Art.-no.	Ø Inner (mm)	Wall (mm)	Ø Outer (mm)	Bending radius (mm)	Weight (kg/mtr)	Length (mtr)
3250006000	6,3	3,5	13,3	40	0,160	50
3250008000	8,0	3,5	15,0	40	0,200	50
3250009000	9,0	3,5	16,0	45	0,220	50

Application:

Very flexible ribbed hose suitable for transport of oxygen. For welding and cutting, for plasma arc welding (PAW) using shielding gas and other similar processes. Not suitable for LPG, MPS and CNG.

Remark:

- Cutted length not possible

SALDAFORM®/RED



Acetylene hose
for welding purposes.

Marking: ISO 3821 - 2MPa (20 bar) - dimension - Saldiform®
- year

Norm:	EN ISO 1307:2008, ISO 3821:2019
Working pressure:	20 bar
Bursting pressure:	60 bar
Min. temperature:	-30 °C
Max. temperature:	+70 °C
Compound tube:	EPDM

Construction tube:	Smooth
Color tube:	Black
Compound cover:	EPDM
Cover:	Smooth
Color cover:	Red
Reinforcements:	Textile plies

Art.-no.	Ø Inner (mm)	Wall (mm)	Ø Outer (mm)	Bending radius (mm)	Weight (kg/mtr)	Length (mtr)
3256006000	6,3	3,5	13,3	40	0,160	40
3256009000	9,0	3,5	16,0	45	0,220	40
3256013000	12,5	5,0	22,5	65	0,410	50
3256015000	16,0	5,0	26,0	80	0,470	50

Application:

Very flexible smooth hose suitable for transport of acetylene. For welding and cutting, for plasma arc welding (PAW) using shielding gas and other similar processes. Also suitable for hydrogen, coal gas (mixture of carbon monoxide and hydrogen gas), carbon dioxide, argon, nitrogen for welding and cutting. Not suitable for LPG, MPS and CNG.

Remark:

- Cutted length not possible

Gas hoses

SALDAFORM®/BLUE



Oxygen hose

hose for welding purposes

Marking: ISO 3821 - 2MPa (20 bar) - dimension - Saldiform®
- year

Norm:	EN ISO 1307:2008, ISO 3821:2019
Working pressure:	20 bar
Bursting pressure:	60 bar
Min. temperature:	-30 °C
Max. temperature:	+70 °C
Compound tube:	EPDM

Construction tube:	Smooth
Color tube:	Black
Compound cover:	EPDM
Cover:	Smooth
Color cover:	Blue
Reinforcements:	Textile plies

Art.-no.	Ø Inner (mm)	Wall (mm)	Ø Outer (mm)	Bending radius (mm)	Weight (kg/mtr)	Length (mtr)
3251006000	6,3	5,0	16,3	40	0,270	40
3251006013	6,3	3,5	13,3	40	0,160	40
3251013000	12,5	5,0	22,5	65	0,410	50
3251015000	16,0	5,0	26,0	80	0,470	50

Application:

Very flexible smooth hose suitable for transport of oxygen. For welding and cutting, for plasma arc welding (PAW) using shielding gas and other similar processes. Not suitable for LPG, MPS and CNG.

Remark:

- Cutted length not possible

SALDAFORM®/BLACK



Argon hose
for welding purposes

Marking: ISO 3821 2 MPA/20 bar - ID mm Saldaform®
Druckluft/Stickstoff/CO²/Argon Compressed Air/Nitrogen/CO²/
Argon - year

Norm:	EN ISO 1307:2008, ISO 3821:2019
Working pressure:	20 bar
Bursting pressure:	60 bar
Min. temperature:	-30 °C
Max. temperature:	+70 °C
Compound tube:	EPDM

Construction tube:	Smooth
Color tube:	Black
Compound cover:	EPDM
Cover:	Smooth
Color cover:	Black
Reinforcements:	Textile plies

Art.-no.	Ø Inner (mm)	Wall (mm)	Ø Outer (mm)	Bending radius (mm)	Weight (kg/mtr)	Length (mtr)
3262006000	6,3	3,5	13,3	40	0,160	40
3262009000	9,0	3,5	16,0	50	0,220	40

Application:

Very flexible smooth hose for the transport of inert gases such as argon, nitrogen, carbon dioxide and compressed air.

Remark:

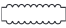
- Cutted length not possible

Gas hoses

ROBAFORM®



Propane hose

Marking:  ISO 3821 - 2MPa (20 bar) - dimension - Robaform® - year

Norm:	EN ISO 1307:2008, ISO 3821:2019
Working pressure:	20 bar
Bursting pressure:	60 bar
Min. temperature:	-30 °C
Max. temperature:	+70 °C
Compound tube:	NBR
Construction tube:	Smooth

Color tube:	Black
Compound cover:	EPDM
Cover:	Smooth
Color cover:	Orange
Resistance cover:	Ageing resistant, Weather resistant
Reinforcements:	Textile plies

Art.-no.	Ø Inner (mm)	Wall (mm)	Ø Outer (mm)	Weight (kg/mtr)	Length (mtr)
3266008050	8,0	3,5	15,0	0,200	50

Application:

Very flexible hose for the transport of propane, gaseous liquid petroleum gas (LPG), CNG and for mixtures of methyl acetylene. Hose is used for welding and cutting work. Very popular in the roofing industry due to the reinforced insert, which is distinctive of the robust / firm character of this hose. Frequently used as a propane gas burner hose.

Remark:

- Cutted length not possible

SALDAFORM®



Twin hose

for acetylene and oxygen welding purposes.

Marking: ISO 3821 - 2MPa (20 bar) - dimension - Saldafom®
- year

Norm:	EN ISO 1307:2008, ISO 3821:2019	Construction tube:	Smooth
Working pressure:	20 bar	Color tube:	Black
Bursting pressure:	60 bar	Compound cover:	EPDM
Min. temperature:	-30 °C	Cover:	Smooth
Max. temperature:	+70 °C	Color cover:	Blue (oxygen) / red (acetylene)
Compound tube:	EPDM	Reinforcements:	Textile plies

Art.-no.	Ø Inner	Wall (mm)	Ø Outer (mm)	Weight (kg/mtr)	Length (mtr)
3260005005	5/5	3,0	11,0	0,239	50
3260006006	6/6	3,5	13,0	0,325	40/50
3260006009	6/9	5,0/3,5	16,0	0,440	40/50
3260008008	8/8	3,5	15,0	0,412	50
3260009009	9/9	3,5	16,0	0,440	50

Application:

Blue hose - Very flexible smooth hose suitable for transport of oxygen. For welding and cutting, for plasma arc welding (PAW) and other similar processes.

Red hose – Very flexible smooth hose suitable for transport of acetylene. For welding and cutting, for plasma arc welding (PAW) and other similar processes. Also suitable for hydrogen, syngas (mixture of carbon monoxide and hydrogen gas), carbon dioxide, argon, nitrogen for welding and cutting. Not suitable for LPG, MPS and CNG.

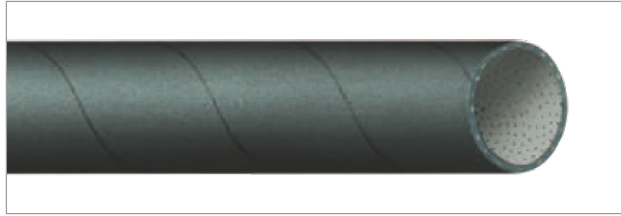
Remark:

- Cutted length not possible

Cable protection hose



CAVOCORD



Cable protection hose

Norm:	EN ISO 1307:2008	Compound tube:	SBR, with visible textile plies
Min. temperature:	-30 °C	Construction tube:	Mandrel built
Max. temperature:	+85 °C	Compound cover:	SBR
Electr. resistance tube:	Insulating $>10^9 \Omega$	Cover:	Fabric finish
Electr. resistance cover:	Insulating $>10^9 \Omega$	Color cover:	Black

Art.-no.	Ø Inner (mm)	Wall (mm)	Ø Outer (mm)	Weight (kg/mtr)	Length (mtr)
3290020000	20,0	1,5	23,0	0,120	40
3290022000	22,0	1,5	25,0	0,140	40
3290025000	25,0	1,5	28,0	0,160	40
3290028000	28,0	1,5	31,0	0,180	40
3290030000	30,0	1,5	33,0	0,190	40
3290032000	32,0	1,5	35,0	0,200	40
3290035000	35,0	1,5	38,0	0,220	40
3290040000	40,0	1,5	43,0	0,250	40
3290045000	45,0	1,5	48,0	0,280	40
3290050000	51,0	1,5	54,0	0,340	40

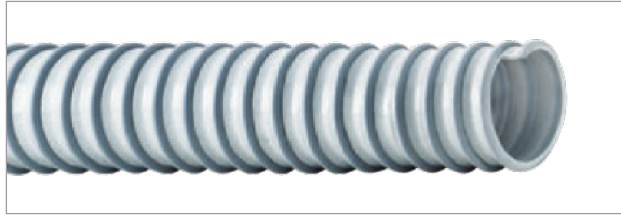
Application:

The hose is suitable for bundling or protecting hoses and cables, chains, welding torches and various other applications where it is important that the products are protected against damage or other external conditions. Thin wall and easily coverable.

Remark:

- Cutted length not possible

AIRFLEX®



PVC ducting hose

Marking:  Airflex® - Dimension

Norm:	EN ISO 1307:2008	Compound cover:	PVC
Min. temperature:	-15 °C	Cover:	Corrugated
Max. temperature:	+60 °C	Color cover:	Grey
Compound tube:	PVC	Reinforcements:	Rigid PVC spiral
Construction tube:	Smooth	Color spiral:	Grey
Color tube:	Grey		

Art.-no.	Ø Inner (mm)	Ø Outer (mm)	Bending radius (mm)	Vacuum (bar)	Weight (kg/mtr)	Length (mtr)
4500020000	20,0	25,0	20	0,60	0,130	30
4500025000	25,0	31,0	25	0,55	0,200	50
4500032000	32,0	38,0	32	0,45	0,240	50
4500038000	38,0	45,0	38	0,45	0,320	50
4500040000	40,0	47,0	40	0,45	0,360	50
4500045000	45,0	52,0	45	0,40	0,410	50
4500050000	51,0	58,0	51	0,40	0,480	50
4500060000	60,0	68,0	60	0,40	0,620	50
4500063000	63,0	72,0	63	0,40	0,660	50
4500070000	70,0	79,0	70	0,40	0,760	50
4500075000	76,0	85,0	76	0,40	0,820	50
4500080000	80,0	90,0	80	0,40	0,900	50
4500090000	90,0	101,0	90	0,40	1,080	50
4500100000	102,0	112,0	102	0,40	1,160	50
4500110000	110,0	121,0	110	0,35	1,320	30
4500120000	120,0	130,0	120	0,35	1,450	30
4500125000	127,0	138,0	127	0,35	1,500	20
4500150000	152,0	164,0	152	0,30	1,900	20
4500160000	160,0	172,0	160	0,30	2,100	20
4500180000	180,0	193,0	180	0,25	2,400	20
4500200000	203,0	219,0	203	0,20	2,900	20
4500250000	254,0	270,0	254	0,20	3,800	10
4500300000	305,0	324,0	305	0,10	4,800	10

Application:

Hose is suitable for suction of air, gas, smoke, dust and chemical vapors in extraction systems. The hose is also used as a pressureless drain for condensation water in air conditioners/cooling systems and as a cable protection hose. Due to its construction, the hose is very flexible and kink resistant. Not resistant to sparks and welding spatter.

Remark:

- We recommend using cord for hose assembly
- Cutted length possible

Ventilation hoses

VENTILAZIONE®/LDA



Extraction hose for welding fumes

Norm:	EN 13180, EN ISO 1307:2008	Compound tube:	Plastified polyester cloth
Min. temperature:	-10 °C	Color tube:	Grey
Max. temperature:	+80 °C	Reinforcements:	Steel spiral

Art.-no.	Ø Inner (mm)	Weight (kg/mtr)	Length (mtr)
4535076600	76,0	0,110	6
4535102600	102,0	0,165	6
4535127600	127,0	0,200	6
4535150600	152,0	0,280	6
4535160600	165,0	0,290	6
4535200600	203,0	0,450	6

Application:

The hose is suitable for suction of gas, smoke and welding fumes in various extraction systems. The hose is also used on tumble dryers and is fully compressible in longitudinal direction.

Remark:

- Cutted length not possible

We recommend assembly with:

6060:
ABA clamps

see catalogue 21-K P.95

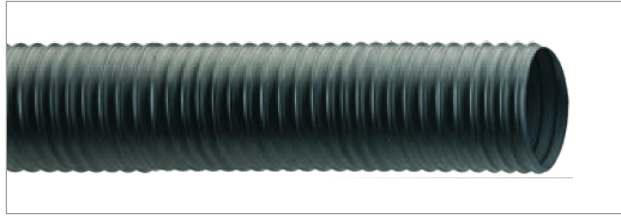


6202:
Mikalor Supra - clamps

see catalogue 21-K P.98



VENTILAZIONE®/CALOR



Ventilation and ducting hose

Norm:	EN ISO 1307:2008
Min. temperature:	-40 °C
Max. temperature:	+120 °C
Temperature peak:	+145 °C
Compound tube:	Thermoplastic elastomer
Construction tube:	Corrugated

Color tube:	Black
Compound cover:	Thermoplastic elastomer
Cover:	Corrugated
Color cover:	Black
Reinforcements:	Steel spiral

Art.-no.	Ø Inner (mm)	Bending radius (mm)	Vacuum (bar)	Weight (kg/mtr)	Length (mtr)
4512050000	51,0	50	0,22	0,220	20
4512060000	60,0	60	0,18	0,250	20
4512070000	70,0	70	0,15	0,340	20
4512075000	76,0	75	0,11	0,370	20
4512080000	80,0	80	0,11	0,390	20
4512090000	90,0	90	0,11	0,440	20
4512100000	102,0	100	0,10	0,490	15
4512110000	110,0	110	0,10	0,530	15
4512125000	127,0	127	0,09	0,700	15
4512140000	140,0	140	0,09	0,760	15
4512150000	152,0	152	0,07	0,830	15
4512160000	160,0	160	0,07	0,880	15
4512200000	203,0	203	0,06	1,230	15

Application:

The hose is suitable for suction of hot air, smoke, gas, chemical vapors and aeration of engines. Due to the use of a high quality thermoplastic elastomer, it is extremely suitable for extraction systems where higher temperatures are released. Not suitable for solid materials.

Remark:

- Cutted length possible

We recommend assembly with:

6060:
ABA clamps



see catalogue 21-K P.95

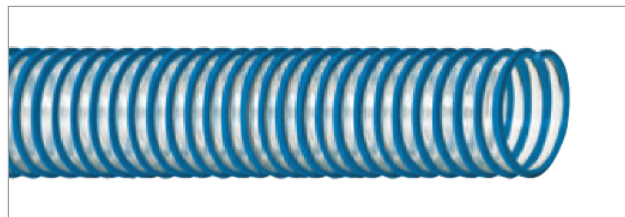
6202:
Mikalor Supra - clamps



see catalogue 21-K P.98

Abrasion resistant hoses

AIRFLEX®/PU/FOOD



Light universal polyurethane suction hose

Marking:  Airflex®/PU/Food - REG. EU 10/2011 - Dimension

Norm:	EN ISO 1307:2008, EU 10/2011 Cat. A, EU 10/2011 Cat. B, EU 10/2011 Cat. C, EU 10/2011 Cat. D1, EU 10/2011 Cat. D2, EU 10/2011 Cat. E, EU 1935/2004, LFGB
Min. temperature:	-25 °C
Max. temperature:	+85 °C
Compound tube:	PU

Construction tube:	Smooth
Color tube:	Transparent
Compound cover:	PU
Cover:	Corrugated
Color cover:	Transparent
Reinforcements:	Rigid PVC spiral
Color spiral:	Blue

Art.-no.	Ø Inner (mm)	Ø Outer (mm)	PU wall (mm)	Bending radius (mm)	Vacuum (bar)	Weight (kg/mtr)	Length (mtr)
4605025000	25,0	31,0	0,50	25	0,25	0,160	20
4605032000	32,0	39,0	0,50	35	0,20	0,220	20
4605038000	38,0	45,0	0,50	40	0,20	0,250	20
4605040000	40,0	47,0	0,50	40	0,20	0,280	20
4605045000	45,0	53,0	0,50	45	0,20	0,320	20
4605050000	51,0	59,0	0,50	50	0,20	0,360	20
4605060000	60,0	68,0	0,70	60	0,16	0,480	20
4605063000	63,0	71,0	0,70	65	0,16	0,560	20
4605070000	70,0	79,0	0,70	70	0,16	0,600	20
4605075000	76,0	85,0	0,70	75	0,16	0,680	20
4605100000	102,0	112,0	0,70	100	0,13	1,000	20
4605125000	127,0	139,0	0,80	130	0,10	1,400	20
4605150000	152,0	165,0	0,80	160	0,08	1,800	20
4605200000	203,0	218,0	0,90	205	0,04	2,400	10

Application:

Suitable for all types of food; liquid, oil-containing food products but also for dry solid food products up to 40°C. Can also be used for air, dust, powder, wood chips, chemical vapors and extremely suitable for transit or disposal of isolation materials. Very flexible and wear resistant, due to its special construction, the hose remains smooth inside, even if it is bent, so that it maintains a smooth transport of the medium. The hose has a very long lifespan.

Remark:

- We recommend using cord for hose assembly
- Cutted length possible

We recommend assembly with:

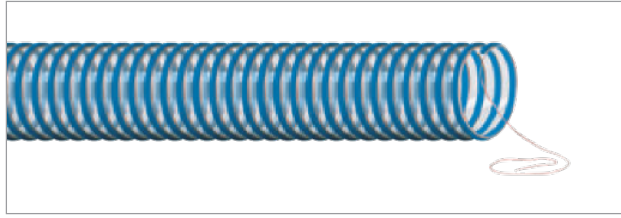
6202:
Mikalor Supra - clamps



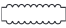
see catalogue 21-K P.98

Abrasion resistant hoses

AIRFLEX®/PU/AS/FOOD



Light universal polyurethane suction hose
with static wire to discharge static electricity

Marking:  Airflex®/PU/Food/AS - M - REG. EU 10/2011
- Dimension

Norm:	EN ISO 1307:2008, EU 10/2011 Cat. A, EU 10/2011 Cat. B, EU 10/2011 Cat. C, EU 10/2011 Cat. D1, EU 10/2011 Cat. D2, EU 10/2011 Cat. E, EU 1935/2004, LFGB
Min. temperature:	-25 °C
Max. temperature:	+85 °C
Compound tube:	PU

Construction tube:	Smooth
Color tube:	Transparent
Compound cover:	PU
Cover:	Corrugated
Color cover:	Transparent
Reinforcements:	Rigid PVC spiral, Static wire
Color spiral:	Blue

Art.-no.	Ø Inner (mm)	Ø Outer (mm)	PU wall (mm)	Bending radius (mm)	Vacuum (bar)	Weight (kg/mtr)	Length (mtr)
4606032000	32,0	39,0	0,50	32	0,20	0,280	20
4606038000	38,0	45,0	0,50	38	0,20	0,310	20
4606040000	40,0	47,0	0,50	40	0,20	0,340	20
4606050000	51,0	59,0	0,50	51	0,20	0,430	20
4606075000	76,0	85,0	0,70	76	0,16	0,760	20
4606100000	102,0	112,0	0,70	102	0,13	1,120	20

Application:

Suitable for all types of food; liquid, oil-containing food products but also for dry solid food products up to 40°C. Can also be used for air, dust, powder, wood chips, chemical vapors and extremely suitable for transit or disposal of isolation materials. Very flexible and wear resistant, due to its special construction, the hose remains smooth inside, even if it is bent, so that it maintains a smooth transport of the medium. The hose has a very long lifespan. Hose is equipped with a static wire to discharge the build-up static electricity.

Remark:

- We recommend using cord for hose assembly
- Cutted length possible

We recommend assembly with:

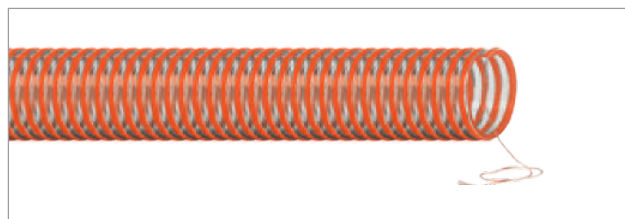
6202:
Mikalor Supra - clamps



see catalogue 21-K P.98

Abrasion resistant hoses

SCIROPPO®/PU/FOOD/AS



Food quality, abrasion resistant suction and discharge hose

with static wire to discharge static electricity

Marking:  Sciroppo®/PU/Food/AS - M - REG. EG 10/2011 - Diameter

Norm:	EN ISO 1307:2008, EU 10/2011 Cat. E, EU 1935/2004, LFGB
PU wall:	0,50 mm
Vacuum:	0,70 bar
Min. temperature:	-15 °C
Max. temperature:	+60 °C
Compound tube:	PU

Construction tube:	Smooth
Color tube:	Transparent
Compound cover:	PVC
Cover:	Corrugated
Color cover:	Transparent
Reinforcements:	Rigid PVC spiral, Static wire
Color spiral:	Orange

Art.-no.	Ø Inner (mm)	Ø Outer (mm)	WP at 20°C (bar)	Bending radius (mm)	Weight (kg/mtr)	Length (mtr)
4603038000	38,0	46,0	7,0	160	0,610	30
4603050000	51,0	61,0	6,5	210	0,920	30
4603075000	76,0	88,0	4,0	310	1,550	30
4603100000	102,0	115,0	3,5	410	2,450	30

Application:

Hose is suitable for powdery or granular food products up to 40°C. Hose is very flexible and wear resistant due to the high quality PU inner wall.

Remark:

- We recommend using cord for hose assembly
- Regarding the overpressure we would like to refer to the guidelines for the right use of the hoses which are mentioned on our website
- Cutted length possible

We recommend assembly with:

5548:
Food couplings



see catalogue 21-K P.83

5520:
Kamllok couplings



see catalogue 21-K P.36

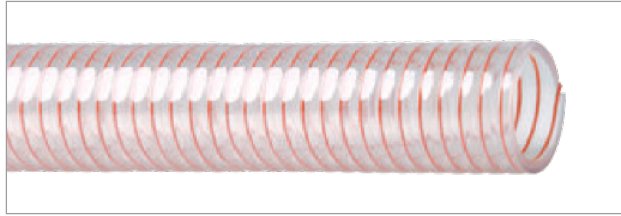
6202:
Mikalor Supra -
clamps



see catalogue 21-K P.98

Abrasion resistant hoses

ARMOFLEX®/PU/FOOD



High abrasion resistant and food quality suction and discharge hose

Marking:  Armoflex®/PU /Food - Diameter - Reg. EU 10/2011

Norm:	EN ISO 1307:2008, EU 10/2011 Cat. A, EU 10/2011 Cat. B, EU 10/2011 Cat. C, EU 10/2011 Cat. D1, EU 10/2011 Cat. E, EU 1935/2004, LFGB
Working pressure at 20°C:	5,0 bar
Vacuum:	0,90 bar
Min. temperature:	-25 °C

Max. temperature:	+85 °C
Compound tube:	PU
Construction tube:	Smooth
Color tube:	Transparent
Compound cover:	PU
Cover:	Smooth
Color cover:	Transparent
Reinforcements:	Coated steel wire

Art.-no.	Ø Inner (mm)	Wall (mm)	Ø Outer (mm)	Bending radius (mm)	Weight (kg/mtr)	Length (mtr)
4483038000	38,0	4,5	47,0	270	0,770	30
4483040000	40,0	4,5	49,0	280	0,820	30
4483050000	51,0	5,0	61,0	360	1,200	30

Application:

Certified transparent food suction/discharge hose for liquid and dry food such as fruit juices, milk, sugar and milk powder up to 40°C. The hose is also suitable for transport of other wear resistant materials such as PVC granulate, grit, lime powder and other granulates. Hose can be used for transport of extremely wear resistant materials.

Remark:

- Regarding the overpressure we would like to refer to the guidelines for the right use of the hoses which are mentioned on our website
- Cutted length possible

We recommend assembly with:

5548:
Food couplings



see catalogue 21-K P.83

5520:
Kamllok couplings



see catalogue 21-K P.36

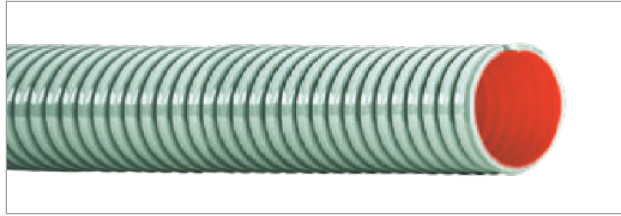
6170:
"Pa-Ri" clamps



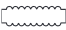
see catalogue 21-K P.103

Abrasion resistant hoses

ANTIABRASIVO®/AS



Abrasive resistant polyurethane lined hose
with static wire to discharge static electricity.

Marking:  Antiabrasivo / AS - M - Diameter

Norm:	EN ISO 1307:2008	Construction tube:	Smooth
PU wall:	2,00 mm	Color tube:	Red
Vacuum:	0,80 bar	Compound cover:	PVC
Min. temperature:	-15 °C	Cover:	Slightly corrugated
Max. temperature:	+60 °C	Color cover:	Green
Compound tube:	PU	Reinforcements:	Rigid PVC spiral, Static wire
Abrasion value tube:	30 mm ³		

Art.-no.	Ø Inner (mm)	Wall (mm)	Ø Outer (mm)	WP at 20°C (bar)	Bending radius (mm)	Weight (kg/mtr)	Length (mtr)
4660075000	76,0	8,0	92,0	6,5	456	2,300	50
4660100000	102,0	9,0	120,0	4,0	612	3,280	30
4660125000	127,0	10,0	147,0	3,5	762	4,500	30
4660150000	152,0	10,5	173,0	3,0	912	6,100	20

Application:

Suitable for gravel, sand, mud, cement, grain, grit and other abrasive materials. Robust, very wear resistant and very suitable for use as an extremely wear resistant transport hose/pipe. Widely used in the industrial cleaning and roofing industry for transporting gravel to flat roofs. Due to its extremely thick PU inner wall of ± 2mm, the best product available in this range. Hose is equipped with a static wire to discharge the build-up static electricity.

Remark:

- We recommend using cord for hose assembly
- Regarding the overpressure we would like to refer to the guidelines for the right use of the hoses which are mentioned on our website
- Cutted length possible

We recommend assembly with:

5721:
Perrot couplings



see catalogue 21-K P.23

5710:
Bauer couplings



see catalogue 21-K P.21

6200:
Super clamps



see catalogue 21-K P.99

Abrasion resistant hoses

PURFLEX/L



Polyurethane ducting hose
for light duty applications.

Marking:  Purflex / L - Diameter - flow direction

Norm:	EN ISO 1307:2008	Compound cover:	PU
Min. temperature:	-40 °C	Cover:	Corrugated
Max. temperature:	+90 °C	Color cover:	Transparent
Compound tube:	PU	Resistance tube:	Oil resistant, Petrol resistant
Construction tube:	Corrugated	Reinforcements:	Steel spiral
Color tube:	Transparent		

Art.-no.	Ø Inner (mm)	PU wall (mm)	Bending radius (mm)	Vacuum (bar)	Weight (kg/mtr)	Length (mtr)
4610025000	25,0	0,40	25	0,32	0,140	20
4610032000	32,0	0,40	30	0,32	0,160	20
4610038000	38,0	0,40	38	0,28	0,190	20
4610040000	40,0	0,40	40	0,28	0,200	20
4610050000	51,0	0,40	50	0,22	0,250	20
4610060000	60,0	0,40	60	0,18	0,290	20
4610070000	70,0	0,43	70	0,15	0,430	20
4610075000	76,0	0,43	75	0,11	0,460	20
4610080000	80,0	0,43	80	0,11	0,490	20
4610090000	90,0	0,43	90	0,10	0,550	20
4610100000	102,0	0,53	102	0,10	0,650	15
4610120000	120,0	0,53	120	0,09	0,760	15
4610125000	127,0	0,63	127	0,09	0,800	15
4610150000	152,0	0,63	152	0,07	0,960	15
4610160000	160,0	0,63	160	0,07	1,010	15
4610200000	203,0	0,63	205	0,06	1,400	15
4610250000	254,0	0,65	254	0,05	1,920	10
4610300000	305,0	0,65	305	0,03	2,380	10

Application:

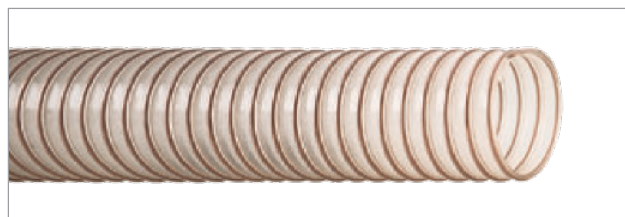
Suitable for wear resistant applications such as industrial vacuum cleaners and industrial extraction systems. Very flexible and durable and therefore easy to handle. Suitable for dust, air, PVC granulate or other granular materials.

Remark:

- We recommend using cord for hose assembly
- Cutted length possible

Abrasion resistant hoses

PURFLEX/H



Polyurethane suction and discharge hose
for medium duty applications.

Norm:	DIN 4102 B1, EN ISO 1307:2008
PU wall:	1,40 mm
Min. temperature:	-40 °C
Max. temperature:	+90 °C
Electrical resistance:	Antistatic < 10 ⁹ Ω
Compound tube:	PU
Construction tube:	Corrugated

Color tube:	Transparent
Compound cover:	PU
Cover:	Corrugated
Color cover:	Transparent
Resistance tube:	Microbe resistant, Oil resistant, Petrol resistant
Reinforcements:	Steel spiral

Art.-no.	Ø Inner (mm)	Ø Outer (mm)	WP at 20°C (bar)	Bending radius (mm)	Vacuum (bar)	Weight (kg/mtr)	Length (mtr)
4630025000	25,0	32,0	3,8	25	1,00	0,280	10/15
4630032000	32,0	42,0	3,7	32	1,00	0,440	10/15
4630038000	38,0	48,0	3,2	38	1,00	0,520	10/15
4630050000	51,0	60,0	2,4	51	0,83	0,660	10/15
4630060000	60,0	70,0	2,0	60	0,69	0,780	10/15
4630065000	65,0	75,0	1,9	65	0,54	0,840	10/15
4630075000	76,0	86,0	1,6	76	0,51	1,050	10/15
4630080000	80,0	91,0	1,5	80	0,48	1,110	10/15
4630090000	90,0	101,0	1,4	90	0,42	1,250	10/15
4630100000	102,0	111,0	1,2	102	0,39	1,490	10/15
4630110000	110,0	121,0	1,1	110	0,36	1,630	10/15
4630120000	120,0	131,0	1,0	120	0,33	1,770	10/15
4630125000	127,0	136,0	1,0	127	0,32	1,840	10/15
4630150000	152,0	161,0	0,8	152	0,27	2,410	10
4630200000	203,0	213,0	0,6	203	0,15	3,120	10

Application:

Flexible wear resistant hose suitable for medium duty working conditions, even at low temperatures. Widely used in industrial vacuum cleaners, vacuum lift and handling systems, municipal work (lawn mowers, sweepers, leaf blowers, etc.), surface treatment (shot blasting and sand blasting grit processing at shipyards, in blast cabinets, etc.) and also extremely suitable for transporting wood chips, granulate, grain, powders, sand, wood pellets and other abrasive materials.

Remark:

- We recommend using cord for hose assembly
- Regarding the overpressure we would like to refer to the guidelines for the right use of the hoses which are mentioned on our website
- Cutted length possible

Abrasion resistant hoses

PURFLEX/HX



Polyurethane suction and discharge hose
for heavy duty applications.

Norm:	DIN 4102 B1, EN ISO 1307:2008
PU wall:	2-2,5 mm
Min. temperature:	-40 °C
Max. temperature:	+90 °C
Electrical resistance:	Antistatic < 10 ⁹ Ω
Compound tube:	PU
Construction tube:	Corrugated

Color tube:	Transparent
Compound cover:	PU
Cover:	Corrugated
Color cover:	Transparent
Resistance tube:	Microbe resistant, Oil resistant, Petrol resistant
Reinforcements:	Steel spiral

Art.-no.	Ø Inner (mm)	Ø Outer (mm)	WP at 20°C (bar)	Bending radius (mm)	Vacuum (bar)	Weight (kg/mtr)	Length (mtr)
4645050000	51,0	62,0	3,2	134	1,00	1,020	15
4645075000	76,0	88,0	2,3	195	1,00	1,470	15
4645100000	102,0	115,0	1,8	272	1,00	2,310	15
4645125000	127,0	140,0	1,5	336	0,89	3,440	15
4645150000	152,0	165,0	1,3	435	0,84	3,720	15

Application:

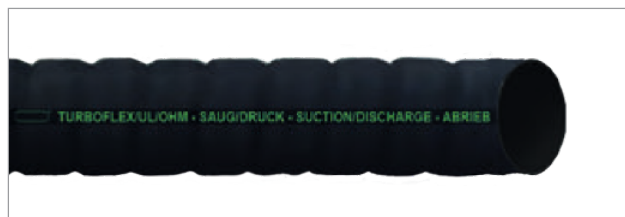
Flexible, extreme abrasion resistant hose suitable for heavy duty working conditions, even at cold temperatures. Widely used in the plastic processing industry, vacuum trucks in industrial cleaning, agriculture, building/construction work, silos and tankers, etc. Very suitable for transporting gravel, glass, grains, sand, granulates, grit, powder and various other granular abrasive materials.

Remark:

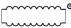
- We recommend using cord for hose assembly
- Regarding the overpressure we would like to refer to the guidelines for the right use of the hoses which are mentioned on our website
- Cutted length possible

Abrasion resistant hoses

TURBOFLEX®/U.L./OHM



Abrasive resistant suction and discharge hose
with electrical conductive properties.

Marking:  Turboflex®/UL/Ohm - Saug/Druck - Suction/Discharge - Abrieb/Abrasion 60 mm³ - WP 5 bar - BP 15 bar - Ω/T

Norm:	EN ISO 1307:2008, ISO 4649 (previous DIN 53516)	Eletr. resistance tube to cover:	Antistatic $10^9 \Omega$
Working pressure:	5 bar	Compound tube:	NR
Bursting pressure:	15 bar	Abrasion value tube:	60 mm³
Vacuum:	0,90 bar	Construction tube:	Smooth
Min. temperature:	-35 °C	Color tube:	Black
Max. temperature:	+80 °C	Compound cover:	NR/SBR
Electr. resistance tube:	Electrical conductive $10^6 \Omega$	Cover:	Fabric finish, Flat corrugated
Electr. resistance cover:	Electrical conductive $10^6 \Omega$	Color cover:	Black
		Reinforcements:	Steel spiral, Textile plies

Art.-no.	Ø Inner (mm)	Wall (mm)	Ø Outer (mm)	Bending radius (mm)	Weight (kg/mtr)	Length (mtr)
3508050000	51,0	5,5	62,0	130	1,310	20
3508063000	63,0	6,0	75,0	160	1,800	20
3508075000	76,0	6,0	88,0	190	2,130	20
3508100000	102,0	6,5	115,0	255	3,070	20
3508125000	127,0	8,5	144,0	380	5,110	20
3508150000	152,0	8,5	169,0	460	6,040	20

Application:

Due to its light weight and flexible construction, the hose is frequently used as working hose. Also suitable for suction of sand and slurry. Very flexible and light, with wear and notch resistant inner wall. The ideal hose for the industrial cleaning industry.

Remark:

- Cutted length possible

We recommend assembly with:

5721:
Perrot couplings



see catalogue 21-K P.23

5710:
Bauer couplings



see catalogue 21-K P.21

6200:
Super clamps



see catalogue 21-K P.99

Abrasion resistant hoses

TURBOFLEX®



Abrasion resistant suction and discharge hose

Marking:  Turboflex® S/D PN 4 bar - M

Norm:	EN ISO 1307:2008
Working pressure:	4 bar
Bursting pressure:	12 bar
Vacuum:	0,90 bar
Min. temperature:	-30 °C
Max. temperature:	+80 °C
Electr. resistance tube:	Insulating $>10^9 \Omega$
Electr. resistance cover:	Antistatic $<10^9 \Omega$
Electr. resistance tube to cover:	Isolating $>10^9 \Omega$

Compound tube:	NR/PARA
Abrasion value tube:	100-110 mm ³
Construction tube:	Smooth
Color tube:	Beige
Compound cover:	SBR/NR
Cover:	Fabric finish
Color cover:	Black
Reinforcements:	Static wire, Steel spiral, Textile plies

Art.-no.	Ø Inner (mm)	Wall (mm)	Ø Outer (mm)	Bending radius (mm)	Weight (kg/mtr)	Length (mtr)
3505050000	51,0	6,5	64,0	204	1,720	40
3505063000	63,0	6,5	76,0	252	2,260	40
3505075000	76,0	7,5	91,0	304	2,950	40
3505100000	102,0	8,0	118,0	408	4,100	20
3505125000	125,0	8,0	141,0	500	5,480	20
3505150000	152,0	10,5	173,0	760	7,990	20

Application:

The para rubber tube is extremely suitable for suction of grit, sand, gravel and slurry. In particular, round-shaped materials that have a "bouncing effect" causing them to bounce / jump of the wall instead of damaging it.

Remark:

- At assembly connect static wire
- Cutted length possible

We recommend assembly with:

5721:
Perrot couplings



see catalogue 21-K P.23

5710:
Bauer couplings



see catalogue 21-K P.21

6200:
Super clamps



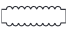
see catalogue 21-K P.99

Abrasion resistant hoses

TURBOCORD®



Sandblast hose

Marking:  Turbocord® - Diameter - PN 12 bar - Abrieb/
Abrasion 60/70 mm³

Norm:	EN ISO 1307:2008, ISO 4649 (previous DIN 53516)
Working pressure:	12 bar
Bursting pressure:	36 bar
Min. temperature:	-30 °C
Max. temperature:	+80 °C
Electr. resistance tube:	Electrical conductive $10^6 \Omega$
Electr. resistance cover:	Antistatic $10^9 \Omega$

Compound tube:	NR/SBR
Abrasion value tube:	60-70 mm ³
Construction tube:	Smooth
Color tube:	Black
Compound cover:	SBR
Cover:	Fabric finish
Color cover:	Black
Reinforcements:	Textile plies

Art.-no.	Ø Inner (mm)	Wall (mm)	Ø Outer (mm)	Weight (kg/mtr)	Length (mtr)
3500013027	13,0	7,0	27,0	0,575	40
3500019033	19,0	7,0	33,0	0,750	40
3500025039	25,0	7,0	39,0	0,840	40
3500032048	32,0	8,0	48,0	1,100	40
3500038054	38,0	8,5	55,0	1,450	40
3500042060	42,0	9,0	60,0	1,700	40
3500050070	50,0	10,0	70,0	2,150	40

Application:

High quality classic sandblast hose which, due to its extreme abrasive resistant tube, is suitable for transporting extremely abrasive materials such as quartz sand, blasting grit, corundum, glass etc. The special extruded tube ensures a very long lifespan compared to other products available on the market. The Turbocord sandblast hose is one of the bestsellers in the sand blasting industry.

Remark:

- Cutted length possible

Abrasion resistant hoses

SM1® - STRAHLMEISTER



Premium sandblast hose

Marking: SM1® - Sandstrahl-Shotblast-Strahlmeister® PN 12 bar

Norm:	ISO 4649 (previous DIN 53516)
Working pressure:	12 bar
Bursting pressure:	42 bar
Min. temperature:	-35 °C
Max. temperature:	+80 °C
Electr. resistance tube:	Electrical conductive $10^6 \Omega$
Electr. resistance cover:	Antistatic $10^9 \Omega$

Compound tube:	SBR/NR/BR
Abrasion value tube:	36 mm ³
Construction tube:	Smooth
Color tube:	Black
Compound cover:	SBR
Cover:	Fabric finish
Color cover:	Black
Reinforcements:	Textile plies

Art.-no.	Ø Inner (mm)	Wall (mm)	Ø Outer (mm)	Bending radius (mm)	Weight (kg/mtr)	Length (mtr)
3501013027	13,0	7,0	27,0	130	0,500	40
3501019033	19,0	7,0	33,0	190	0,650	40
3501025039	25,0	7,0	39,0	250	0,800	40
3501032048	32,0	8,0	48,0	320	1,100	40
3501042060	42,0	9,0	60,0	420	1,650	40

Application:

The best quality sandblast hose available on the market with a very high quality wear resistant 36mm³ tube. Suitable for highly abrasive materials such as quartz sand, blasting grit, corundum and glass. This hose is the solution for very heavy applications and has an extremely long lifespan due to the very good abrasion value of the tube.

Remark:

- Cutted length not possible

Abrasion resistant hoses

BETONCORD®/10



Concrete hose

Marking:  Betoncord® Concrete / Beton PN 10 bar

Norm:	EN ISO 1307:2008, ISO 4649 (previous DIN 53516)	Compound tube:	NR/SBR
Working pressure:	10 bar	Abrasion value tube:	70 mm ³
Bursting pressure:	30 bar	Construction tube:	Smooth
Min. temperature:	-30 °C	Color tube:	Black
Max. temperature:	+80 °C	Compound cover:	NR/SBR
Electr. resistance tube:	Electrical conductive <10 ⁶ Ω	Cover:	Fabric finish
Electr. resistance cover:	Electrical conductive <10 ⁶ Ω	Color cover:	Black
		Reinforcements:	Textile plies

Art.-no.	Ø Inner (mm)	Wall (mm)	Ø Outer (mm)	Bending radius (mm)	Weight (kg/mtr)	Length (mtr)
3521060000	60,0	10,0	80,0	600	2,680	20/40
3521063090	63,0	13,5	90,0	650	3,930	40

Application:

Hose is being used in the building / construction, mining, tunneling, civil engineering (restoration / renovation work) and others. Suitable for transporting concrete mortar and other wet abrasive materials such as grouting mortar, plaster, plaster mortar and others. The hose can also be used for dry substances such as cement and blasting grit. Very long lifespan due to thick wear resistant tube and cover.

Remark:

- Cutted length possible

Abrasion resistant hoses

BETONCORD®/40



Concrete hose

Marking:  Betoncord® Concrete / Beton PN 40 bar

Norm:	EN ISO 1307:2008, ISO 4649 (previous DIN 53516)
Working pressure:	40 bar
Bursting pressure:	120 bar
Min. temperature:	-35 °C
Max. temperature:	+80 °C
Electr. resistance tube:	Electrical conductive <math><10^6 \Omega</math>
Electr. resistance cover:	Antistatic <math><10^9 \Omega</math>
Eletr. resistance tube to cover:	Antistatic <math><10^9 \Omega</math>

Compound tube:	SBR/NR
Abrasion value tube:	70 mm ³
Construction tube:	Smooth
Color tube:	Black
Compound cover:	SBR
Cover:	Fabric finish
Color cover:	Black
Reinforcements:	Textile plies

Art.-no.	Ø Inner (mm)	Wall (mm)	Ø Outer (mm)	Bending radius (mm)	Weight (kg/mtr)	Length (mtr)
3520025000	25,0	7,0	39,0	250	0,840	40
3520035000	35,0	7,0	49,0	350	1,150	40
3520038000	38,0	8,0	54,0	380	1,480	40
3520050000	50,0	9,0	68,0	500	1,950	40
3520063000	63,5	11,0	85,5	650	2,920	40

Application:

Suitable for concrete mortar and other wet abrasive materials such as grouting mortar, plaster, plaster mortar and others. The hose can also be used for dry substances such as cement and blasting grit. Very long lifespan due to very thick wear resistant tube and cover. The hose is kink-resistant due to the special compact construction of the insertions. This allows the hose to be used at high working pressures.

Remark:

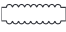
- Cutted length possible

Abrasion resistant hoses

SILOCORD®



Dry cargo discharge hose

Marking:  Silocord® Zement / Dry-Cargo - PN 8 bar - M

Norm:	EN ISO 1307:2008, ISO 4649 (previous DIN 53516)	Compound tube:	NR/SBR
Working pressure:	8 bar	Abrasion value tube:	90-110 mm ³
Bursting pressure:	24 bar	Construction tube:	Smooth
Min. temperature:	-30 °C	Color tube:	Black
Max. temperature:	+80 °C	Compound cover:	SBR
Electr. resistance tube:	Electrical conductive <10 ⁶ Ω	Cover:	Fabric finish
Electr. resistance cover:	Electrical conductive <10 ⁶ Ω	Color cover:	Black
		Reinforcements:	Static wire, Textile plies

Art.-no.	Ø Inner (mm)	Wall (mm)	Ø Outer (mm)	Bending radius (mm)	Weight (kg/mtr)	Length (mtr)
3530075000	76,0	9,0	94,0	760	2,870	20/40
3530076098	76,0	11,0	98,0	760	3,640	40
3530080000	80,0	10,0	100,0	800	3,400	40
3530090000	90,0	10,0	110,0	900	3,780	20/40
3530100000	102,0	10,0	122,0	1020	4,240	20/40

Application:

Very wear resistant and flexible silo hose that can be used for filling and unloading silos and silo trucks. Suitable for highly abrasive materials such as cement, sand, lime powder, animal feed, granulates, wood pellets etc. The hose is very easy to handle due to its flexible construction. It is one of the safest hoses for this application as the static electricity will be discharged through the static wire and the rubber itself also has conductive properties.

Remark:

- Cutted length possible

We recommend assembly with:

5123:
Storz couplings



see catalogue 21-K P.12

5572:
TW couplings



see catalogue 21-K P.73

5560:
Safety clamps



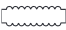
see catalogue 21-K P.106

Abrasion resistant hoses

SILOCORD®/SPEZIAL



Dry cargo discharge hose heavy duty quality
with extremely abrasive resistant inner tube.

Marking:  Silocord® / Spezial für Splitt - Soda - Quarzsand PN 10 bar - M

Norm:	EN ISO 1307:2008, ISO 4649 (previous DIN 53516)	Compound tube:	NR
Working pressure:	10 bar	Abrasion value tube:	70 mm ³
Bursting pressure:	30 bar	Construction tube:	Smooth
Min. temperature:	-30 °C	Color tube:	Black
Max. temperature:	+85 °C	Compound cover:	NR/SBR
Electr. resistance tube:	Electrical conductive <math><10^6 \Omega</math>	Cover:	Fabric finish
Electr. resistance cover:	Electrical conductive <math><10^6 \Omega</math>	Color cover:	Black
		Reinforcements:	2 Static wires, Textile plies

Art.-no.	Ø Inner (mm)	Wall (mm)	Ø Outer (mm)	Bending radius (mm)	Weight (kg/mtr)	Length (mtr)
3542076098	76,0	11,0	98,0	760	3,440	40
3542102126	102,0	12,0	126,0	1020	4,850	20

Application:

Very wear and notch resistant silo hose that can be used for filling and unloading silos and is extremely suitable for very abrasive materials such as split, soda, quartz sand, etc. Hose has an extra thick wear-resistant tube, which gives it a very good lifespan at heavy duty applications. Hose has a double safety as the static electricity is discharged through the cross-braided static wires and the rubber itself also has conductive properties.

Remark:

- At assembly connect both static wires
- Cutted length possible

We recommend assembly with:

5123:
Storz couplings



see catalogue 21-K P.12

5572:
TW couplings



see catalogue 21-K P.73

5560:
Safety clamps



see catalogue 21-K P.106

Abrasion resistant hoses

SILOFLAT



Dry cargo discharge hose, layflat

Marking: 

Norm:	EN ISO 1307:2008, ISO 4649 (previous DIN 53516)	Construction tube:	Smooth
Working pressure:	4 bar	Color tube:	Black
Min. temperature:	-30 °C	Compound cover:	SBR/NR
Max. temperature:	+85 °C	Cover:	Fabric finish
Compound tube:	NR	Color cover:	Black
Abrasion value tube:	100 mm ³	Reinforcements:	2 Static wires, Textile plies

Art.-no.	Ø Inner (mm)	Wall (mm)	Ø Outer (mm)	Weight (kg/mtr)	Length (mtr)
3540075000	76,0	4,5	85,0	1,420	40
3540100000	102,0	6,0	114,0	2,460	40

Application:

Suitable for cement, lime powder, animal feed and other abrasive materials. Used, among other things, for concrete silos, hose is suitable for pressure application.

Remark:

- Cutted length possible

We recommend assembly with:

5110:
Storz couplings



see catalogue 21-K P.12

6036:
BAND-IT strapping



see catalogue 21-K P.108

SILOFLAT/DISCHARGE



Concrete silo discharge hose

Marking:  Siloflat Auslauf/Discharge

Norm:	EN ISO 1307:2008, ISO 4649 (previous DIN 53516)	Compound tube:	NR
Working pressure:	3 bar	Abrasion value tube:	70 mm ³
Bursting pressure:	9 bar	Construction tube:	Smooth
Min. temperature:	-30 °C	Color tube:	Black
Max. temperature:	+85 °C	Compound cover:	SBR/NR
Electr. resistance tube:	Electrical conductive <10 ⁶ Ω	Cover:	Fabric finish
Electr. resistance cover:	Antistatic <10 ⁹ Ω	Color cover:	Black
		Reinforcements:	Textile plies

Art.-no.	Ø Inner (mm)	Wall (mm)	Ø Outer (mm)	Weight (kg/mtr)	Length (mtr)
3546152166	152,0	7,0	166,0	4,190	20
3546203217	203,0	7,0	217,0	5,640	20
3546254270	254,0	8,0	270,0	7,620	20
3546305323	305,0	9,0	323,0	10,400	10

Application:

Hose is used as a chute at silos for unloading of cement, lime powder, animal feeds and other abrasive materials. Hose is suitable for pressureless applications in combination with one open end.

Remark:

- Cutted length possible / no cutting cost

We recommend assembly with:

6120:
Hose clamps "Pa-Ri"

see catalogue 21-K P.102



Abrasion resistant hoses

SILOCORD®/SP



Dry cargo suction and discharge hose

Marking:  Silocord® / SP Zement / Dry - Cargo PN 6 bar - M

Norm:	EN ISO 1307:2008, ISO 4649 (previous DIN 53516)
Working pressure:	6 bar
Vacuum:	0,80 bar
Min. temperature:	-30 °C
Max. temperature:	+80 °C
Electr. resistance tube:	Electrical conductive <math><10^6 \Omega</math>
Electr. resistance cover:	Electrical conductive <math><10^6 \Omega</math>
Compound tube:	NR/SBR

Abrasion value tube:	90-110 mm ³
Construction tube:	Smooth
Color tube:	Black
Compound cover:	SBR
Cover:	Fabric finish
Color cover:	Black
Reinforcements:	Static wire, Steel spiral, Textile plies

Art.-no.	Ø Inner (mm)	Wall (mm)	Ø Outer (mm)	Bending radius (mm)	Weight (kg/mtr)	Length (mtr)
3535076096	76,0	10,0	96,0	310	3,880	40
3535102122	102,0	10,0	122,0	410	5,260	20

Application:

Very wear resistant and flexible silo hose with steel spiral that can be used for filling and unloading silos and silo trucks, suitable for highly abrasive materials such as cement, sand, lime powder, animal feed, granulates, wood pellets, etc. Hose is very easy to handle due to its flexible construction and it is one of the safest hoses for this application as the static electricity is discharged through a static wire and the rubber itself also has conductive properties.

Remark:

- Cutted length possible

We recommend assembly with:

5123:
Storz couplings



see catalogue 21-K P.12

5611:
Swiveling flange



see catalogue 21-K P.55

5560:
Safety clamps



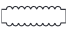
see catalogue 21-K P.106

Abrasion resistant hoses

SILOCORD®/SPEZIAL/SP



Dry cargo suction and discharge hose, heavy duty
with extremely abrasive resistant tube.

Marking:  Silocord® / Spezial / SP für Splitt - Soda - Quarzsand - PN 10 bar - M

Norm:	EN ISO 1307:2008
Working pressure:	10 bar
Bursting pressure:	30 bar
Vacuum:	0,80 bar
Min. temperature:	-30 °C
Max. temperature:	+80 °C
Electr. resistance tube:	Electrical conductive <math><10^6 \Omega</math>
Electr. resistance cover:	Electrical conductive <math><10^6 \Omega</math>

Compound tube:	NR
Abrasion value tube:	70 mm ³
Construction tube:	Smooth
Color tube:	Black
Compound cover:	CR
Cover:	Fabric finish
Color cover:	Black
Reinforcements:	2 Static wires, Steel spiral, Textile plies

Art.-no.	Ø Inner (mm)	Wall (mm)	Ø Outer (mm)	Bending radius (mm)	Weight (kg/mtr)	Length (mtr)
3544076098	76,0	11,0	98,0	310	4,070	40
3544102126	102,0	12,0	126,0	410	5,900	20
3544152173	152,0	10,5	173,0	760	8,990	20

Application:

Very wear resistant and notch resistant silo hose with steel spiral that can be used for filling and unloading silos and is extremely suitable for highly abrasive materials such as split, soda, quartz sand, etc. Hose has an extra thick wear resistant tube which gives it a very good lifespan in heavy applications. Hose has a double safety as the static electricity is discharged through the cross braided static wires and the rubber itself also has conductive properties.

Remark:

- At assembly connect both static wires
- Cutted length possible

We recommend assembly with:

5123:
Storz couplings



see catalogue 21-K P.12

5611:
Swiveling flange



see catalogue 21-K P.55

5560:
Safety clamps



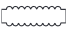
see catalogue 21-K P.106

Abrasion resistant hoses

SILOCORD®/ALIM



Abrasion resistant food quality discharge hose
with light inner tube.

Marking:  Silocord® / Alim Granulate - PN 8 bar - BfR XXI Kat. 4 - FDA

Norm:	BfR XXI:2002 (cat. 4), EN ISO 1307:2008, EU 1935/2004, FDA (CFR 21 § 177.2600), ISO 4649 (previous DIN 53516)	Max. cleaning time with steam:	30 minutes without pressure
Working pressure:	8 bar	Compound tube:	NR
Bursting pressure:	24 bar	Abrasion value tube:	100 mm ³
Min. temperature:	-35 °C	Construction tube:	Smooth
Max. temperature:	+80 °C	Color tube:	White
Max. temperature steam cleaning:	+130 °C	Compound cover:	SBR
		Cover:	Fabric finish
		Color cover:	Black
		Reinforcements:	2 Static wires, Textile plies

Art.-no.	Ø Inner (mm)	Wall (mm)	Ø Outer (mm)	Bending radius (mm)	Weight (kg/mtr)	Length (mtr)
3560075000	75,0	9,0	93,0	550	3,000	40
3560100000	100,0	10,0	120,0	750	4,400	40

Application:

Very wear resistant and flexible silo hose that can be used for filling and unloading silos and silo trucks, suitable for highly abrasive dry materials such as grains, sugar, powder, animal feeds, PVC granulates and various other dry foods. The hose has insulating properties due to its white inner wall, which means that static electricity is build up. As a result, the static wires must always be connected. For safety reasons, we have chosen to provide this hose with two cross-braided static wires, which ensures a very good discharge of static electricity.

Remark:

- At assembly connect both static wires
- Cutted length possible

We recommend assembly with:

5123:
Storz couplings



see catalogue 21-K P.12

5563:
TW couplings



see catalogue 21-K P.76

5560:
Safety clamps



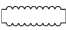
see catalogue 21-K P.106

Abrasion resistant hoses

SILOCORD®/ALIM/SP



Abrasion resistant food quality suction and discharge hose
with light inner tube.

Marking:  Silocord®/Alim/SP - S/D - Granulate - PN 8 bar - BfR XXI Kat. 4 - FDA

Norm:	BfR XXI:2002 (cat. 4), EN ISO 1307:2008, EU 1935/2004, FDA (CFR 21 § 177.2600), ISO 4649 (previous DIN 53516)	Max. cleaning time with steam:	30 minutes without pressure
Working pressure:	8 bar	Compound tube:	NR
Bursting pressure:	24 bar	Abrasion value tube:	100 mm ³
Vacuum:	0,90 bar	Construction tube:	Smooth
Min. temperature:	-35 °C	Color tube:	White
Max. temperature:	+80 °C	Compound cover:	SBR
Max. temperature steam cleaning:	+130 °C	Cover:	Fabric finish
		Color cover:	Black
		Reinforcements:	2 Static wires, Steel spiral, Textile plies

Art.-no.	Ø Inner (mm)	Wall (mm)	Ø Outer (mm)	Bending radius (mm)	Weight (kg/mtr)	Length (mtr)
3565075000	75,0	9,0	93,0	350	3,370	40
3565100000	100,0	10,0	120,0	500	5,150	20

Application:

Very wear resistant and flexible silo hose with steel spiral that can be used for filling and unloading silos and silo trucks, suitable for highly abrasive dry materials such as grains, sugar, powder, animal feeds, PVC granulates and various other dry foods. The hose has insulating properties due to its white inner wall, which means that static electricity is build up. As a result, the static wires must always be connected. For safety reasons, we have chosen to provide this hose with two cross-braided static wires, which ensures a very good discharge of static electricity.

Remark:

- At assembly connect both static wires
- Cutted length possible

We recommend assembly with:

5123:
Storz couplings



see catalogue 21-K P.12

5563:
TW couplings



see catalogue 21-K P.76

5560:
Safety clamps



see catalogue 21-K P.106

Oil and petrol hoses

NAFTREX/B



Oil and petrol hose

Marking: DIN 73379 - Diameter - Germany

Norm:	DIN 73379 march 1982 type B, SAE J30
Working pressure:	10 bar
Bursting pressure:	30 bar
Min. temperature:	-35 °C
Max. temperature hot water:	+90 °C
Compound tube:	NBR

Construction tube:	Smooth
Color tube:	Black
Compound cover:	NBR
Cover:	Textile braided
Color cover:	Black
Resistance tube:	B20, E10, E85

Art.-no.	Ø Inner (mm)	Wall (mm)	Ø Outer (mm)	Bending radius (mm)	Weight (kg/mtr)	Length (mtr)
3370032070	3,2	1,9	7,0	40	0,045	10/20
3370035075	3,5	2,0	7,5	45	0,050	10/20
3370040090	4,0	2,5	9,0	45	0,075	10/20
3370045095	4,5	2,5	9,5	50	0,080	10/20
3370050100	5,0	2,5	10,0	50	0,085	10/20
3370055105	5,5	2,5	10,5	50	0,090	10/20
3370060110	6,0	2,5	11,0	60	0,100	10/20
3370070120	7,0	2,5	12,0	60	0,110	10/20
3370075125	7,5	2,5	12,5	65	0,115	10/20
3370080130	8,0	2,5	13,0	65	0,120	10/20
3370090140	9,0	2,5	14,0	65	0,135	10/20
3370115170	11,5	2,75	17,0	75	0,180	10/20

Application:

Extruded, textile braided fuel hose suitable for the transport of fuels with an aromatic content up to 50%. Also suitable for various other materials (coolants, water, air, liquids without oxidizing substances) with different temperature ranges per application. The Naftrex/B is used for machines and agricultural and horticultural tools.

Remark:

- Delivery can consist of 10m and 20m lengths combined
- Cutted length not possible

CARBOFORM®/EN/ISO



Oil and fuel resistant hose

Marking: Carbopomp® Marine Fuel Hose ISO 7840:2013 A1 E10/B10 compatible - CE - SAE J 1527:2011 USCG A1 - RINA - LLOYD'S Register - year- DN

Norm:	EN ISO 1307:2008, ISO 7840:2013-A1
Min. temperature:	-20 °C
Max. temperature:	+80 °C
Compound tube:	Synthetic rubber
Construction tube:	Smooth
Color tube:	Black
Compound cover:	Synthetic rubber

Cover:	Fabric finish
Color cover:	Black
Resistance tube:	Biodiesel, E10
Aromatic content maximum:	50 %
Resistance cover:	Flame resistant, Self extinguishing
Reinforcements:	Textile plies

Art.-no.	Ø Inner (mm)	Wall (mm)	Ø Outer (mm)	WP (bar)	BP (bar)	Weight (kg/mtr)
3305006000	6,0	4,5	15,0	3	14	0,240
3305008000	8,0	4,0	16,0	3	14	0,250
3305010000	10,0	4,0	18,0	3	14	0,280
3305012000	12,0	4,5	21,0	3	10	0,360
3305016000	16,0	4,5	25,0	3	10	0,450
3305019000	19,0	4,5	28,0	3	10	0,500

Application:

Fuel supply hose for leisure boats up to max. 24 meters long. Suitable for transport of oil, unleaded petrol and fuels with an aromatic content up to 50%. Also suitable for E10 and biodiesel.

Remark:

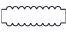
- Coils in various lengths.
- Cutted length possible

Oil and petrol hoses

CARBOFORM®



Oil and petrol delivery hose

Marking:  Carboform® PN 10 bar Ω

Norm:	EN ISO 1307:2008	Color tube:	Black
Working pressure:	10 bar	Compound cover:	NBR/EPDM
Bursting pressure:	30 bar	Cover:	Smooth
Min. temperature:	-40 °C	Color cover:	Black
Max. temperature:	+100 °C	Resistance tube:	Oil resistant, Petrol resistant
Electr. resistance tube:	Electrical conductive <math><10^6 \Omega</math>	Aromatic content maximum:	40 %
Electr. resistance cover:	Electrical conductive <math><10^6 \Omega</math>	Resistance cover:	Ageing resistant, Weather resistant
Compound tube:	NBR	Reinforcements:	Textile plies
Construction tube:	Smooth		

Art.-no.	Ø Inner (mm)	Wall (mm)	Ø Outer (mm)	Bending radius (mm)	Weight (kg/mtr)	Length (mtr)
3300019000	19,0	4,0	27,0	120	0,400	50
3300025000	25,0	5,0	35,0	160	0,620	50

Application:

Suitable as a discharge hose for oil and fuels with a maximum aromatic content of 40%. The hose can be used for various applications in agriculture, industry and construction. For example for oil and fuel storage tanks. The Carboform can also be used as an air hose.

Remark:

- Cutted length possible

CARBOFORM®/PD



Petrol station pumphose

Marking: Carboform®/PD EN 1360:2013 Type 1 - Diameter - 16 bar - Ω - TRbF 131/part 2 § 5.5 - quarter/year

Norm:	EN 1360 - 2013 type 1, EN ISO 1307:2008, TRbF 131, part 2, § 5.5
Working pressure:	16 bar
Bursting pressure:	48 bar
Min. temperature:	-30 °C
Max. temperature:	+90 °C
Electr. resistance tube:	Electrical conductive $10^6 \Omega$
Electr. resistance cover:	Electrical conductive $10^6 \Omega$
Compound tube:	NBR

Construction tube:	Smooth
Color tube:	Black
Compound cover:	CR
Cover:	Smooth
Color cover:	Black
Resistance tube:	Biodiesel, E10, Oil resistant, Petrol resistant
Aromatic content maximum:	50 %
Reinforcements:	Textile plies

Art.-no.	Ø Inner (mm)	Wall (mm)	Ø Outer (mm)	Bending radius (mm)	Weight (kg/mtr)	Length (mtr)
3330015000	15,0	5,0	25,0	80	0,450	40
3330019000	19,0	6,0	31,0	100	0,650	40
3330025000	25,0	6,0	37,0	150	0,800	40

Application:

Standardized, highly flexible supply hose. Extremely suitable as a reel hose and frequently used at petrol pumps. Suitable for transport of oil, diesel, unleaded petrol and fuels with an aromatic content up to 50%. Also suitable for E10 and biodiesel. The hose can also be used as water and air hose for general service purposes.

Remark:

- Cutted length possible

We recommend assembly with:

5540:
Fuel hose couplings



see catalogue 21-K P.82

5550:
Fuel hose couplings



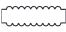
see catalogue 21-K P.82

Oil and petrol hoses

PETROL-OIL



Oil and petrol delivery hose

Marking:  Petrol - Oil Hose PN 25 bar Ω

Norm:	EN ISO 1307:2008	Construction tube:	Smooth
Working pressure:	25 bar	Color tube:	Black
Bursting pressure:	75 bar	Compound cover:	NBR/EPDM
Min. temperature:	-40 °C	Cover:	Smooth
Max. temperature:	+80 °C	Color cover:	Black
Electr. resistance tube:	Electrical conductive <math><10^6 \Omega</math>	Resistance tube:	Oil resistant, Petrol resistant
Electr. resistance cover:	Electrical conductive <math><10^6 \Omega</math>	Aromatic content maximum:	50 %
Compound tube:	NBR	Reinforcements:	Textile plies

Art.-no.	Ø Inner (mm)	Wall (mm)	Ø Outer (mm)	Bending radius (mm)	Weight (kg/mtr)	Length (mtr)
3320006000	6,0	4,0	14,0	40	0,160	50
3320008000	8,0	4,0	16,0	50	0,190	50
3320010000	10,0	4,0	18,0	60	0,230	50
3320013000	13,0	4,0	21,0	80	0,300	50
3320015000	16,0	4,5	25,0	100	0,400	50
3320019000	19,0	5,0	29,0	120	0,500	50
3320025000	25,0	5,5	36,0	150	0,720	50

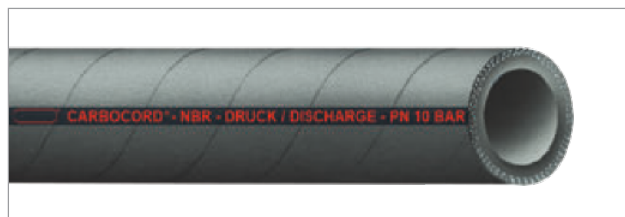
Application:

Highly flexible fuel supply hose suitable for oil and petrol lines in machines and engines. Also used in industry, petrol pumps, garages and automotive workshops. Suitable for industrial oils, fuels and also suitable for compressed air.

Remark:

- Cutted length possible

CARBOCORD®/10



Oil and petrol delivery hose

which is suitable for multi purposes.

Marking:  Carbocord® - NBR - Druck / Discharge - PN 10 bar - Ω

Norm:	EN ISO 1307:2008
Working pressure:	10 bar
Bursting pressure:	30 bar
Min. temperature:	-40 °C
Max. temperature:	+90 °C
Max. temperature oil:	+100 °C
Electr. resistance tube:	Electrical conductive <math><10^6 \Omega</math>
Electr. resistance cover:	Antistatic <math><10^9 \Omega</math>
Eletr. resistance tube to cover:	Antistatic <math><10^9 \Omega</math>

Compound tube:	NBR
Construction tube:	Smooth
Color tube:	Black
Compound cover:	SBR/EPDM
Cover:	Fabric finish
Color cover:	Black
Resistance tube:	Oil resistant, Petrol resistant
Aromatic content maximum:	50 %
Reinforcements:	Textile plies

Art.-no.	Ø Inner (mm)	Wall (mm)	Ø Outer (mm)	Bending radius (mm)	Weight (kg/mtr)	Length (mtr)
3310032000	32,0	6,0	44,0	210	1,000	40
3310038000	38,0	6,5	51,0	300	1,280	40
3310050000	50,0	7,0	64,0	400	1,750	40

Application:

The hose is often used during the loading and unloading of unleaded fuels with a maximum aromatic content up to 50% in fuel tanks and ships. Suitable for industrial oils, biodiesel, fuels oils and mineral based hydraulic oils.

Remark:

- Cutted length possible

We recommend assembly with:

5537:
TW hose couplings

see catalogue 21-K P.70



5572:
TW couplings

see catalogue 21-K P.73



5560:
Safety clamps

see catalogue 21-K P.106

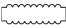


Oil and petrol hoses

CARBOCORD®/EN



Standardized oil and fuel discharge hose

Marking:  Carbocord® EN 12115:2011 NBR 1 - D
- Inside diameter - WP 16 bar - Ω/T - TRbF 131/T2 - §.5.5 -
quarter/year

Norm:	EN 12115:2011, EN 1761:1999, TRbF 131, part 2, § 5.5
Working pressure:	16 bar
Bursting pressure:	64 bar
Min. temperature:	-30 °C
Max. temperature:	+85 °C
Electr. resistance tube:	Electrical conductive $10^6 \Omega$
Electr. resistance cover:	Electrical conductive $10^6 \Omega$
Electr. resistance tube to cover:	Antistatic $10^9 \Omega$

Compound tube:	NBR
Construction tube:	Smooth
Color tube:	Black
Compound cover:	CR
Cover:	Fabric finish
Color cover:	Black
Resistance tube:	Biodiesel, E10, Oil resistant, Petrol resistant
Resistance cover:	Ageing resistant, Weather resistant
Reinforcements:	2 Static wires, Textile plies

Art.-no.	Ø Inner (mm)	Wall (mm)	Ø Outer (mm)	Bending radius (mm)	Weight (kg/mtr)	Length (mtr)
3380032000	32,0	6,0	44,0	175	0,980	40
3380038000	38,0	6,5	51,0	225	1,200	40
3380050000	50,0	8,0	66,0	275	1,860	40
3380075000	75,0	8,0	91,0	350	2,910	40
3380100000	100,0	8,0	116,0	450	3,650	40

Application:

Very flexible, high quality, oil resistant discharge hose, suitable for transport of industrial oils, heating oils, diesel, biodiesel, mineral based hydraulic oils and unleaded fuels with a maximum aromatic content up to 50%. The hose is extremely flexible and meets all the requirements set in EN 12115:2011 norm regarding the bending radius, flame retardant, elongation and electrical resistance (thanks to the conductive tube, the charged static electricity can be safely discharged so that the hose can be used in various ATEX zones) etc. The hose has a safety factor of 1:4. The Carbocord/EN is often used during the loading and unloading of tanks, fuel tanks, ships and in the petrochemical industry where hoses are regularly prescribed in accordance with standard EN 12115:2011.

Remark:

- Cutted length possible

We recommend assembly with:

5537:
TW hose couplings

see catalogue 21-K P.70



5572:
TW couplings

see catalogue 21-K P.73



5560:
Safety clamps

see catalogue 21-K P.106



CARBOFLAT



Flat collapsible discharge hose

Marking:  Carboflat Oil Rig Supply hose - PN .. bar - BP .. bar - Ω/T

Norm:	EN ISO 1307:2008
Min. temperature:	-35 °C
Max. temperature:	+80 °C
Electr. resistance tube:	Electrical conductive $10^6 \Omega$
Electr. resistance cover:	Electrical conductive $10^6 \Omega$
Electr. resistance tube to cover:	Antistatic $10^9 \Omega$
Compound tube:	NBR
Construction tube:	Smooth

Color tube:	Black
Compound cover:	CR
Cover:	Fabric finish
Color cover:	Black
Resistance tube:	Biodiesel
Aromatic content maximum:	50 %
Resistance cover:	Ageing resistant, UV resistant, Weather resistant
Reinforcements:	2 Static wires, Textile plies

Art.-no.	Ø Inner (mm)	Wall (mm)	Ø Outer (mm)	WP (bar)	BP (bar)	Bending radius (mm)	Weight (kg/mtr)	Length (mtr)
3361075000	75,0	7,5	90,0	20	60	450	2,440	40
3361100000	100,0	8,0	116,0	20	60	600	3,650	20/40
3361150000	152,0	9,5	171,0	20	60	910	6,770	20/40
3360200000	203,0	10,5	224,0	16	48	1220	9,590	20

Application:

High quality bunker hose used for loading and unloading tankers in “ship to ship” and “ship to shore” applications. The hose is also being used as a flexible pipe between supply ship and platform at offshore installations. Suitable for transport of industrial oils, heating oils, diesel, biodiesel, mineral based hydraulic oils and unleaded fuels with a maximum aromatic content up to 50%.

Remark:

- Cutted length possible

We recommend assembly with:

5611:
Swiveling flange

see catalogue 21-K P.55



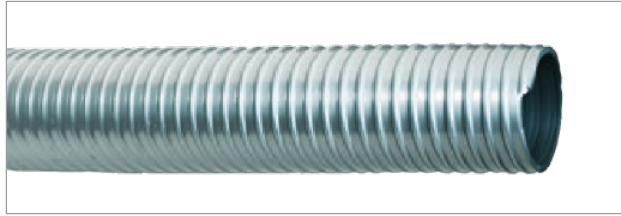
5560:
Safety clamps

see catalogue 21-K P.106

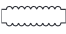


Oil and petrol hoses

NAFTOIL/BUNA



PVC/NBR suction and discharge hose

Marking:  Naftoil / Buna - Inside diameter mm

Norm:	EN ISO 1307:2008	Color tube:	Grey
Vacuum:	0,90 bar	Compound cover:	NBR/PVC
Min. temperature:	-30 °C	Cover:	Slightly corrugated
Max. temperature:	+65 °C	Color cover:	Grey
Compound tube:	NBR/PVC	Reinforcements:	Rigid PVC spiral
Construction tube:	Smooth	Color spiral:	Anthracite

Art.-no.	Ø Inner (mm)	Wall (mm)	Ø Outer (mm)	WP at 20°C (bar)	Bending radius (mm)	Weight (kg/mtr)	Length (mtr)
4465025000	25,0	4,0	33,0	7,0	75	0,440	50
4465032000	32,0	4,5	41,0	6,0	96	0,600	50
4465038000	38,0	5,0	48,0	6,0	114	0,700	50
4465050000	51,0	5,0	61,0	5,0	153	1,050	50
4465063000	63,0	5,5	74,0	4,5	189	1,250	50
4465075000	76,0	6,0	88,0	4,0	228	1,600	50
4465080000	80,0	6,0	92,0	3,0	240	1,700	50
4465090000	90,0	7,0	104,0	3,0	270	2,200	50
4465100000	102,0	7,0	116,0	3,0	306	2,400	50
4465125000	127,0	8,0	143,0	2,0	381	3,300	20
4465150000	152,0	8,5	169,0	2,0	456	4,200	20

Application:

Suitable for transport of industrial water, dung and mineral oils for cleaning work and tank emptying. Very flexible, even in cold conditions. Hose is widely used in agriculture and horticulture, industrial cleaning, grease separators, oil processing industry, municipal works, sewage treatment, etc.

Remark:

- We recommend using cord for hose assembly
- Regarding the overpressure we would like to refer to the guidelines for the right use of the hoses which are mentioned on our website
- Cutted length possible

We recommend assembly with:

5510:
Kamlok couplings



see catalogue 21-K P.27

5721:
Perrot couplings



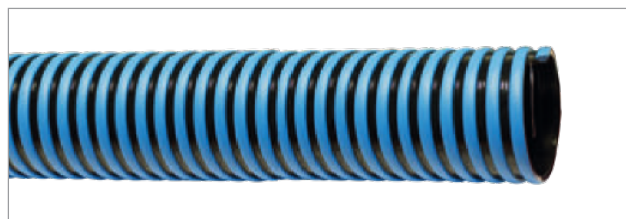
see catalogue 21-K P.23

6200:
Super clamps



see catalogue 21-K P.99

CORRUFLEX/BUNA/AS



Extremely flexible PVC/NBR suction and discharge hose

with static wire to discharge static electricity.

Marking:  Corruflex / Buna / AS - Inside diameter mm

Norm:	EN ISO 1307:2008	Color tube:	Black
Vacuum:	0,90 bar	Compound cover:	NBR/PVC
Min. temperature:	-30 °C	Cover:	Slightly corrugated
Max. temperature:	+65 °C	Color cover:	Black
Compound tube:	NBR/PVC	Reinforcements:	Rigid PVC spiral, Static wire
Construction tube:	Smooth	Color spiral:	Blue

Art.-no.	Ø Inner (mm)	Wall (mm)	Ø Outer (mm)	WP at 20°C (bar)	Bending radius (mm)	Weight (kg/mtr)	Length (mtr)
4466050000	51,0	4,5	60,0	2,0	153	0,960	50
4466075000	76,0	5,5	87,0	2,0	228	1,600	50
4466100000	102,0	7,0	116,0	2,0	306	2,700	50
4466150000	152,0	8,0	168,0	2,0	456	4,750	20

Application:

Suitable for transport of (industrial) water, dung and mineral oils under medium heavy working conditions. The hose is produced from a high quality PVC/NBR blend with a specially developed, very innovative, unique "mushroom shaped" hard PVC spiral, which makes this hose very flexible and fairly smooth on the outside. The flexibility and durability in combination with the fairly smooth exterior of the hose ensures that it is frequently used for (industrial) cleaning activities, agricultural machines, municipal works, sewage treatment, grease separators and emptying of tanks where very high demands are placed on these products.

Remark:

- We recommend using cord for hose assembly
- Regarding the overpressure we would like to refer to the guidelines for the right use of the hoses which are mentioned on our website
- Cutted length possible

We recommend assembly with:

5510:
Kamlok couplings



see catalogue 21-K P.27

5721:
Perrot couplings



see catalogue 21-K P.23

6200:
Super clamps



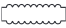
see catalogue 21-K P.99

Oil and petrol hoses

CARBOFLEX®/U.L./OHM



Highly flexible and lightweight oil and petrol suction and discharge hose
with electrical conductive properties.

Marking:  Carboflex®/UL/Ohm NBR - Öl Saug/Druck - Oil suction/discharge - WP 5 bar BP 15 bar - Ω/T

Norm:	EN ISO 1307:2008, TRbF 131, part 2, § 5.5	Eletr. resistance tube to cover:	Antistatic $10^9 \Omega$
Working pressure:	5 bar	Compound tube:	NBR
Bursting pressure:	15 bar	Construction tube:	Smooth
Vacuum:	0,90 bar	Color tube:	Black
Min. temperature:	-40 °C	Compound cover:	CR
Max. temperature:	+90 °C	Cover:	Flat corrugated
Max. temperature oil:	+100 °C	Color cover:	Black
Electr. resistance tube:	Electrical conductive <math><10^6 \Omega</math>	Aromatic content maximum:	50 %
Electr. resistance cover:	Electrical conductive <math><10^6 \Omega</math>	Reinforcements:	Steel spiral, Textile plies

Art.-no.	Ø Inner (mm)	Wall (mm)	Ø Outer (mm)	Bending radius (mm)	Weight (kg/mtr)	Length (mtr)
3354050000	51,0	5,5	62,0	130	1,380	40
3354075000	76,0	6,0	88,0	190	2,240	40
3354100000	102,0	6,5	115,0	255	3,290	40
3354150000	152,0	8,5	169,0	460	6,340	20

Application:

Due to its special flat corrugated and lightweight construction the Carboflex/U.L./Ohm is an extremely flexible and easy to handle oil suction and discharge hose. The hose meets all SIR guidelines and can be used in various ATEX zones. Very suitable for vehicles and activities in industrial cleaning, tank transport or other activities where the person on the hose prefers to work with a light weight product which is also recommended from the health and safety legislation. Suitable for transport of industrial oils, heating oils, biodiesel, mineral based hydraulic oils and unleaded fuels with a maximum aromatic content up to 50%.

Remark:

- Cutted length possible

We recommend assembly with:

5537:
TW hose couplings

see catalogue 21-K P.70



5560:
Safety clamps

see catalogue 21-K P.106



5572:
TW couplings

see catalogue 21-K P.73



ARMOFLEX®/OIL



NBR/PVC suction and discharge hose

Marking:  Armoflex® / Oil

Norm:	EN ISO 1307:2008
Vacuum:	0,80 bar
Min. temperature:	-15 °C
Max. temperature:	+65 °C
Compound tube:	NBR/PVC
Construction tube:	Smooth

Color tube:	Black
Compound cover:	NBR/PVC
Cover:	Smooth
Color cover:	Black
Resistance cover:	Ageing resistant, Weather resistant
Reinforcements:	Steel spiral

Art.-no.	Ø Inner (mm)	Wall (mm)	Ø Outer (mm)	WP at 20°C (bar)	Weight (kg/mtr)	Length (mtr)
4481025000	25,0	4,0	33,0	8,0	0,520	30
4481032000	32,0	4,0	40,0	7,0	0,720	30
4481038000	38,0	4,5	47,0	7,0	0,870	30
4481050000	51,0	5,5	62,0	5,0	1,320	30

Application:

Very flexible and robust PVC/NBR hose. Suitable for transport of oil, petrol, greases, light acids and alkalis. Hose is widely used in machine construction, industry and during the processing of waste oil.

Remark:

- Regarding the overpressure we would like to refer to the guidelines for the right use of the hoses which are mentioned on our website
- Cutted length possible

We recommend assembly with:

5510:
Kamlok couplings



see catalogue 21-K P.27

5511:
Kamlok couplings



see catalogue 21-K P.30

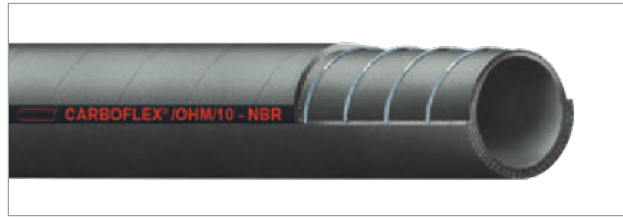
6202:
Mikalor Supra -
clamps



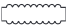
see catalogue 21-K P.98

Oil and petrol hoses

CARBOFLEX®/OHM/10



Oil and petrol suction and discharge hose
with electrical conductive properties.

Marking:  Carboflex®/Ohm/10 - NBR - Öl Saug/Druck
- Oil suction/discharge - PN 10 bar - Ω/T

Norm:	EN ISO 1307:2008
Working pressure:	10 bar
Bursting pressure:	30 bar
Vacuum:	0,90 bar
Min. temperature:	-40 °C
Max. temperature:	+90 °C
Max. temperature oil:	+100 °C
Electr. resistance tube:	Electrical conductive <math><10^6 \Omega</math>
Electr. resistance cover:	Antistatic <math><10^9 \Omega</math>
Electr. resistance tube to cover:	Antistatic <math><10^9 \Omega</math>

Compound tube:	NBR
Construction tube:	Smooth
Color tube:	Black
Compound cover:	SBR/EPDM
Cover:	Fabric finish
Color cover:	Black
Resistance tube:	Oil resistant, Petrol resistant
Aromatic content maximum:	50 %
Resistance cover:	Abrasion resistant, Ozone resistant
Reinforcements:	Steel spiral, Textile plies

Art.-no.	Ø Inner (mm)	Wall (mm)	Ø Outer (mm)	Bending radius (mm)	Weight (kg/mtr)	Length (mtr)
3350025000	25,0	5,5	36,0	55	0,840	40
3350032000	32,0	5,5	43,0	65	1,000	40
3350038000	38,0	6,5	51,0	80	1,370	40
3350042000	42,0	6,5	55,0	120	1,500	40
3350045000	45,0	6,5	58,0	130	1,600	40
3350050000	51,0	6,5	64,0	150	1,800	40
3350063000	63,0	7,5	78,0	200	2,500	40
3350075000	75,0	8,0	91,0	350	3,200	40
3350090000	90,0	8,0	106,0	370	3,700	40
3350100000	100,0	8,0	116,0	400	4,200	40
3350125000	127,0	8,5	144,0	500	5,000	20
3350150000	152,0	11,0	174,0	800	8,600	20

Application:

Very high quality, robust and flexible suction and discharge hose with steel spiral. Suitable for heavy working conditions and extremely suitable as a tanker hose for industrial cleaning. Hose meets all guidelines from the SIR and can be used in various ATEX zones. The hose is often used during the loading and unloading of tanks, fuel tanks and ships for unleaded fuels with a maximum aromatic content up to 50%. Suitable for industrial oil, heating oils, biodiesel and mineral based hydraulic oils.

Remark:

- Cutted length possible

We recommend assembly with:

5537:
TW hose couplings



see catalogue 21-K P.70

5572:
TW couplings



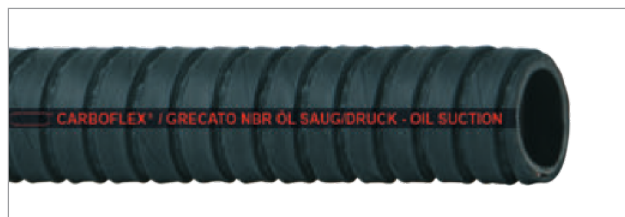
see catalogue 21-K P.73

5560:
Safety clamps

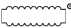


see catalogue 21-K P.106

CARBOFLEX®/GRECATO



Oil and petrol resistant suction and discharge hose

Marking:  Carboflex® / Grecato NBR Öl Saug/Druck - Oil suction/discharge - PN 10 bar Ω

Norm:	EN ISO 1307:2008
Working pressure:	10 bar
Bursting pressure:	30 bar
Vacuum:	0,80 bar
Min. temperature:	-20 °C
Max. temperature:	+85 °C
Temperature peak:	+110 °C
Electr. resistance tube:	Electrical conductive <math><10^6 \Omega</math>
Electr. resistance cover:	Electrical conductive <math><10^6 \Omega</math>
Compound tube:	NBR

Construction tube:	Smooth
Color tube:	Black
Compound cover:	CR
Cover:	Fabric finish, Square corrugated
Color cover:	Black
Resistance tube:	Biodiesel
Aromatic content maximum:	50 %
Resistance cover:	Ageing resistant, Weather resistant
Reinforcements:	Steel spiral, Textile plies

Art.-no.	Ø Inner (mm)	Wall (mm)	Ø Outer (mm)	Bending radius (mm)	Weight (kg/mtr)	Length (mtr)
3353019000	19,0	5,0	29,0	60	0,500	40
3353025000	25,0	5,0	35,0	75	0,630	40
3353032000	32,0	5,0	42,0	100	0,780	40
3353038000	38,0	5,0	48,0	115	0,900	40
3353050000	50,0	6,0	62,0	135	1,400	40
3353075000	76,0	7,5	91,0	190	2,550	40
3353100000	102,0	7,5	117,0	260	3,550	40

Application:

Very flexible suction and discharge hose provided with a so called "Greek" (blocked) profile, which gives the hose an extremely small bending radius. Suitable for industrial oils, heating oils, biodiesel, mineral based hydraulic oils and unleaded fuels with a maximum aromatic content up to 50%. The hose is often used as a hydraulic oil return hose.

Remark:

- Cutted length possible

We recommend assembly with:

5572:
TW couplings



see catalogue 21-K P.73

5537:
TW hose couplings



see catalogue 21-K P.70

5560:
Safety clamps



see catalogue 21-K P.106

Oil and petrol hoses

CARBOFLEX®/EN



Standardized oil and petrol suction and discharge hose

Marking:  Carboflex® - EN 12115:2011 NBR 1 - SD - ID .. - WP 16 bar - Ω/T - TRbF 131/T2 - § 5.5 - quarter/year

Norm:	EN 12115:2011, EN 1761:1999, TRbF 131, part 2, § 5.5
Working pressure:	16 bar
Bursting pressure:	64 bar
Vacuum:	0,90 bar
Min. temperature:	-30 °C
Max. temperature:	+85 °C
Electr. resistance tube:	Electrical conductive <10 ⁶ Ω
Electr. resistance cover:	Electrical conductive <10 ⁶ Ω
Eletr. resistance tube to cover:	Antistatic <10 ⁹ Ω
Compound tube:	NBR

Construction tube:	Smooth
Color tube:	Black
Compound cover:	CR
Cover:	Fabric finish
Color cover:	Black
Resistance tube:	Biodiesel, E10, Oil resistant, Petrol resistant
Aromatic content maximum:	50 %
Resistance cover:	Ageing resistant, Weather resistant
Reinforcements:	Steel spiral, Textile plies
Reinforcement type:	Spiralized

Art.-no.	Ø Inner (mm)	Wall (mm)	Ø Outer (mm)	Bending radius (mm)	Weight (kg/mtr)	Length (mtr)
3356025000	25,0	6,0	37,0	150	0,900	40
3356032000	32,0	6,0	44,0	175	1,050	40
3356038000	38,0	6,5	51,0	225	1,370	40
3356050000	50,0	8,0	66,0	275	2,200	40
3356063000	63,0	8,0	79,0	300	2,700	40
3356075000	75,0	8,0	91,0	350	3,170	40
3356100000	100,0	8,0	116,0	450	4,580	40

Application:

Very flexible, high quality, oil resistant suction and discharge hose with a steel spiral, suitable for transport of industrial oils, heating oils, diesel, biodiesel, mineral based hydraulic oils and unleaded fuels with a maximum aromatic content up to 50%. The hose is extremely flexible and meets all the requirements set in EN 12115:2011 norm regarding the bending radius, flame retardant, elongation, burst pressure and electrical resistance (thanks to the conductive tube, the charged static electricity can be safely discharged so that the hose can be used in various ATEX zones) etc. The hose has a safety factor of 1:4. The Carboflex/EN is often used during the loading and unloading of tanks, fuel tanks, ships and in the petrochemical industry where hoses are regularly prescribed in accordance with standard EN 12115:2011.

Remark:

- Cutted length possible

We recommend assembly with:

5537:
TW hose couplings



see catalogue 21-K P.70

5572:
TW couplings



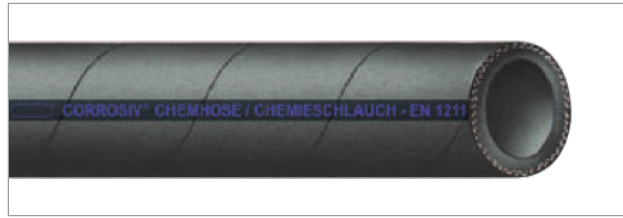
see catalogue 21-K P.73

5560:
Safety clamps

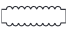


see catalogue 21-K P.106

CORROSIV®/EN



Standardized discharge hose for chemicals

Marking:  Corrosiv® Chemhose / Chemieschlauch - EN 12115:2011 - EPDM - D - ID mm - WP 16 bar Ω /T TRbF 131/T2 § 5.5 quarter/year

Norm:	EN 12115:2011, TRbF 131, part 2, § 5.5
Working pressure:	16 bar
Bursting pressure:	64 bar
Min. temperature:	-35 °C
Max. temperature:	+95 °C
Max. temperature steam cleaning:	+130 °C
Electr. resistance tube:	Electrical conductive $<10^6 \Omega$
Electr. resistance cover:	Electrical conductive $<10^6 \Omega$

Eletr. resistance tube to cover:	Antistatic $<10^9 \Omega$
Compound tube:	EPDM
Construction tube:	Smooth
Color tube:	Black
Compound cover:	EPDM
Cover:	Fabric finish
Color cover:	Black
Reinforcements:	2 Static wires, Textile plies

Art.-no.	Ø Inner (mm)	Wall (mm)	Ø Outer (mm)	Bending radius (mm)	Weight (kg/mtr)	Length (mtr)
3815019000	19,0	6,0	31,0	125	0,570	40
3815025000	25,0	6,0	37,0	150	0,710	40
3815032000	32,0	6,0	44,0	175	0,910	40
3815038000	38,0	6,5	51,0	225	1,125	40
3815050000	50,0	8,0	66,0	275	1,820	40

Application:

The hose is extremely suitable for transport of acids and alkalis in high concentrations, hot water and various cleaning agents. The hose is extremely flexible and meets all the requirements set in EN12115:2011 norm regarding the bending radius, flame retardant, elongation, electrical resistance (thanks to the conductive tube, the charged static electricity can be safely discharged so that the hose can be used in various ATEX zones) etc. The hose also has a double safety as it is additionally equipped with static wires. Next to that, the Corrosiv/EN has got a safety factor of 1:4. Hose can only be used for pressure applications.

Remark:

- Max. temperature depends on the medium.
- Not resistant against hydrocarbons!
- Cutted length possible

We recommend assembly with:

5600:
Kamlok couplings



see catalogue 21-K P.44

5601:
Kamlok couplings



see catalogue 21-K P.45

5561:
Safety clamps

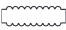


see catalogue 21-K P.107

Chemical hoses

CORROSIV®/SP/EN



Marking:  Corrosiv®/SP Chemhose / Chemieschlauch - EN 12115:2011 - EPDM - SD - ID mm - WP 16 bar Ω/T TRbF 131/T2 §5.5 quarter/year

Standardized suction and discharge hose for chemicals

Norm:	EN 12115:2011, TRbF 131, part 2, § 5.5
Working pressure:	16 bar
Bursting pressure:	64 bar
Vacuum:	0,90 bar
Min. temperature:	-30 °C
Max. temperature:	+95 °C
Max. temperature steam cleaning:	+130 °C
Electr. resistance tube:	Electrical conductive <math><10^6 \Omega</math>

Electr. resistance cover:	Electrical conductive <math><10^6 \Omega</math>
Electr. resistance tube to cover:	Antistatic <math><10^9 \Omega</math>
Compound tube:	EPDM
Construction tube:	Smooth
Color tube:	Black
Compound cover:	EPDM
Cover:	Fabric finish
Color cover:	Black
Reinforcements:	Steel spiral, Textile plies

Art.-no.	Ø Inner (mm)	Wall (mm)	Ø Outer (mm)	Bending radius (mm)	Weight (kg/mtr)	Length (mtr)
3830025000	25,0	6,0	37,0	150	0,780	40
3830032000	32,0	6,0	44,0	175	1,030	40
3830038000	38,0	6,5	51,0	225	1,250	40
3830050000	50,0	8,0	66,0	275	2,100	40
3830063000	63,0	8,0	79,0	300	2,540	40
3830075000	75,0	8,0	91,0	350	2,800	40
3830100000	100,0	8,0	116,0	450	4,100	40

Application:

The hose is extremely suitable for transport of acids and alkalis in high concentrations, hot water and various cleaning agents. The hose is extremely flexible and meets all the requirements set in EN12115:2011 norm regarding the bending radius, flame retardant, elongation, burst pressure safety factor of 1:4, electrical resistance (thanks to the conductive tube, the charged static electricity can be safely discharged so that the hose can be used in various ATEX zones) etc. The hose can be used for suction and pressure applications due to the steel spiral.

Remark:

- Max. temperature depends on the medium.
- Not resistant against hydrocarbons!
- Cutted length possible

We recommend assembly with:

5600:
Kamlok couplings



see catalogue 21-K P.44

5601:
Kamlok couplings



see catalogue 21-K P.45

5561:
Safety clamps

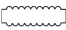


see catalogue 21-K P.107

SUPERCHEM®/UPE/EN



Standardized chemical suction and discharge hose

Marking:  Superchem®/UPE - EN 12115:2011 UPE - SD - ID mm - WP 16 bar - Ω /T TRbF 131/T2 § 5.5 quarter/year

Norm:	EN 12115:2011, TRbF 131, part 2, § 5.5	Eletr. resistance tube to cover:	Antistatic $<10^9 \Omega$
Working pressure:	16 bar	Compound tube:	UPE
Bursting pressure:	64 bar	Construction tube:	Smooth
Vacuum:	0,90 bar	Compound cover:	EPDM
Min. temperature:	-30 °C	Cover:	Fabric finish
Max. temperature:	+100 °C	Color cover:	Black
Electr. resistance tube:	Electrical conductive $<10^6 \Omega$	Reinforcements:	Steel spiral, Textile plies
Electr. resistance cover:	Electrical conductive $<10^6 \Omega$		

Art.-no.	Ø Inner (mm)	Wall (mm)	Ø Outer (mm)	Bending radius (mm)	Weight (kg/mtr)	Length (mtr)
3805019000	19,0	6,0	31,0	187	0,710	40
3805025000	25,0	6,0	37,0	225	0,890	40
3805032000	32,0	6,0	44,0	262	1,080	40
3805038000	38,0	6,5	51,0	337	1,270	40
3805050000	50,0	8,0	66,0	412	2,100	40
3805063000	63,0	8,0	79,0	450	2,510	40
3805075000	75,0	8,0	91,0	525	2,920	40
3805100000	100,0	8,0	116,0	675	4,150	20

Application:

High quality suction and pressure hose with an UPE tube which makes the hose suitable for transport of a large number of acids, alkalis, salts, organic materials (alcohol, esters, ketones etc.), aromatic hydrocarbons and other chemicals. The hose is extremely flexible and meets all the requirements set in the EN12115:2011 norm regarding the bending radius, flame retardant, elongation, burst pressure safety factor of 1:4, electrical resistance (thanks to the conductive tube, the charged static electricity can be safely discharged so that the hose can be used in various ATEX zones) etc. The hose is provided with a double crossed 0,2mm UPE layer so that there is a very small chance that the medium penetrates the tube. By having this, the Superchem/UPE/EN differentiates itself from various other products that are available on the market.

Remark:

- Max. temperature depends on the medium.
- Cutted length possible

We recommend assembly with:

5579:
TW coupling MKST

see catalogue 21-K P.77



5600:
Kamlok couplings

see catalogue 21-K P.44



5561:
Safety clamps

see catalogue 21-K P.107



Products in alphabetical order

A		INDUCORD®/TC	41	SUPERELASTICO	35
AGRIFLAT	25	INDUFORM®/RL	15	T	
AIRBRAKE	63	INDUFORM®/RR	16	TEMPERFORM/BLUE	29
AIRFLEX®	74	L		TEMPERFORM/RED	28
AIRFLEX®/PU/AS/FOOD	78	LAVAFORM	17	TRICOTECH®	14
AIRFLEX®/PU/FOOD	77	LAVAFORM/EXTRA	18	TRIX ROTSTRAHL®	21
ANTIABRASIVO®/AS	81	M		TUBIMAR®/LLOYDS	40
ARIACORD®/DIN	60	METALVAPOR®/EN/ISO	47	TURBOCORD®	87
ARIACORD®/YELLOW	62	MILKCORD®/ SP	49	TURBOFLEX®	86
ARIAFORM® / DIN	59	MILKCORD®/SP/BUTYL	50	TURBOFLEX®/U.L./OHM	85
ARIAFORM®/15	58	MP 20	30	TWIN HOSE/PVC	65
ARIAFORM®/TPU	54	N		V	
ARIAFORM®/YELLOW	61	NAFTOIL/BUNA	107	VAPORCORD®	46
ARMOFLEX®	33	NAFTREX/B	99	VAPORCORD®/ALIM/EXTRA	48
ARMOFLEX®/OIL	110	NIPLAFLEX®	55	VENTILAZIONE®/CALOR	76
ARMOFLEX®/PU/FOOD	80	NITROGEN/YELLOW	57	VENTILAZIONE®/LDA	75
B		P			
BETONCORD®/10	89	PETROL-OIL	103		
BETONCORD®/40	90	POLYFLEX	52		
C		POLYFORM	13		
CALORFORM	19	PURFLEX/H	83		
CARBOCORD®/10	104	PURFLEX/HX	84		
CARBOCORD®/EN	105	PURFLEX/L	82		
CARBOFLAT	106	PYROFLAT®	23		
CARBOFLEX®/EN	113	PYTHON	20		
CARBOFLEX®/GRECATO	112	Q			
CARBOFLEX®/OHM/10	111	QUADRIFLEX	34		
CARBOFLEX®/U.L./OHM	109	R			
CARBOFORM®	101	RADIACORD®	43		
CARBOFORM®/EN/ISO	100	RADIACORD®/DIN	44/45		
CARBOFORM®/PD	102	RESPIROFORM	64		
CAVOCORD	73	ROBAFORM®	71		
CORROSIV®/EN	114	S			
CORROSIV®/SP/EN	115	SALDAFORM®	72		
CORRUFLEX/AS	36	SALDAFORM®/BLACK	70		
CORRUFLEX/BUNA/AS	108	SALDAFORM®/BLUE	67/69		
COSMO®	31	SALDAFORM®/RED	66/68		
COSMO®/ELASTICO	32	SCIROPPO®/AS	51		
D		SCIROPPO®/PU/FOOD/AS	79		
DELTAFLIX®	37	SILOCORD®	91		
E		SILOCORD®/ALIM	97		
EUROLON®	24	SILOCORD®/ALIM/SP	98		
G		SILOCORD®/SP	95		
GOLDSCHLANGE®	22	SILOCORD®/SPEZIAL	92		
H		SILOCORD®/SPEZIAL/SP	96		
HEDUFLEX®	38	SILOFLAT	93		
HEDUFLEX®/GRECATO	39	SILOFLAT/DISCHARGE	94		
I		SM1® - STRAHLMEISTER	88		
INDUCORD®	26	SOLVOFORM	56		
INDUCORD®/GLASFIBER	27	SUPER AIR	53		
INDUCORD®/LANCIA	42	SUPERCHEM®/UPE/EN	116		



baggerman

Baggerman BV | Postbus 155 | 6040 AD Roermond | The Netherlands